

Activity Name	Dur	Start	Finish	2022												2023																		
				July				August				September				October			November			December			January		February							
				03	10	17	24	31	07	14	21	28	04	11	18	25	02	09	16	23	30	06	13	20	27	04	11	18	25	01	08	15	22	29
ED/2018/04 - Trunk Road T2	1025	14-May-21 A	19-Dec-24																															
DESIGN SUBMISSION & APPROVAL	509	14-May-21 A	25-Mar-23																															
GENERAL	267	15-Mar-22 A	28-Feb-23																															
DAP - WVB	12	15-Feb-23	28-Feb-23																															
DDA - Draft - Final Review and prepare for 1st Sub	12	15-Feb-23	28-Feb-23																															
DDA Landscape Design	205	15-Mar-22 A	10-Dec-22																															
DDA - Further information required by SO	24	15-Mar-22 A	25-May-22 A	by SO																														
DDA - 3rd Sub	0		25-May-22 A																															
DDA - 3rd Review by SO	35	26-May-22 A	27-Jun-22 A	DA - 3rd Review by SO																														
DDA - Further information required by SO	24	28-Jun-22 A	22-Sep-22 A																															
DDA - 4th Sub	0		22-Sep-22 A																															
DDA - 4th Review by SO	35	23-Sep-22 A	06-Oct-22 A																															
DDA - Further information required by SO	24	07-Oct-22 A	05-Nov-22																															
DDA - 5th Sub	0		05-Nov-22																															
DDA - 5th Review by SO	35	06-Nov-22	10-Dec-22																															
DDA - SO Consent for Construction	0		10-Dec-22																															
DEPRESSED ROAD [DPR]	86	11-Mar-22 A	04-May-22 A																															
DDA DPR - Portal Structure	86	11-Mar-22 A	04-May-22 A																															
DDA - 3rd Review by SO	35	11-Mar-22 A	31-Mar-22 A																															
DDA - Further information required by SO	12	01-Apr-22 A	06-Apr-22 A																															
DDA - 4th Sub	0		06-Apr-22 A																															
DDA - 4th Review by SO	35	07-Apr-22 A	04-May-22 A																															
DDA - SO Consent for Construction	0		04-May-22 A																															
Stage 1A Completion	0		04-May-22 A																															
WEST VENTILATION BUILDING [WVB]	451	14-May-21 A	13-Jan-23																															
DDA WVB - ABWF	368	11-Sep-21 A	13-Jan-23																															
DDA - Review by SO	28	11-Sep-21 A	04-Nov-22																															
DDA - Review by IP / DC	28	11-Sep-21 A	04-Nov-22																															
DDA - Further information required by SO	30	05-Nov-22	09-Dec-22																															
DDA - 2nd Sub	0		09-Dec-22																															
DDA - 2nd Review by SO	35	10-Dec-22	13-Jan-23																															
DDA - SO Consent for Construction	0		13-Jan-23																															
DDA WVB - Aesthetic Design	450	14-May-21 A	12-Jan-23																															
DDA - Review by IP / DC	28	14-May-21 A	04-Nov-22																															
DDA - 2nd Review by SO	35	20-Jun-21 A	10-Nov-22																															
DDA - 2nd Review by IP	35	20-Jun-21 A	10-Nov-22																															
DDA - Further information required by SO	24	11-Nov-22	08-Dec-22																															
DDA - 3rd Sub	0		08-Dec-22																															
DDA - 3rd Review by SO	35	09-Dec-22	12-Jan-23																															
DDA - SO Consent for Construction	0		12-Jan-23																															
SOUTH APRON ROAD WORKS	363	11-Nov-21 A	21-Jan-23																															
DDA Road L10 (S) - Alignment, Traffic Sign, Road Marking and Traffic	172	11-Nov-21 A	08-Jun-22 A																															
DDA - Further information required by SO	12	11-Nov-21 A	01-Apr-22 A																															
DDA - 6th Sub	0		01-Apr-22 A																															
DDA - 6th Review by SO	35	02-Apr-22 A	08-Jun-22 A																															
DDA - SO Consent for Construction	0		08-Jun-22 A																															
DDA Road L10 (S) - Roadworks and Street Furniture	209	18-Nov-21 A	27-Jun-22 A																															
DDA - Further information required by SO	12	18-Nov-21 A	31-Mar-22 A																															
DDA - 7th Sub	0		31-Mar-22 A																															
DDA - 7th Review by SO	35	01-Apr-22 A	06-May-22 A																															
DDA - Further information required by SO	13	07-May-22 A	01-Jun-22 A																															
DDA - 8th Sub	0		01-Jun-22 A																															
DDA - 8th Review by SO	35	02-Jun-22 A	27-Jun-22 A																															
DDA - SO Consent for Construction	0		27-Jun-22 A																															

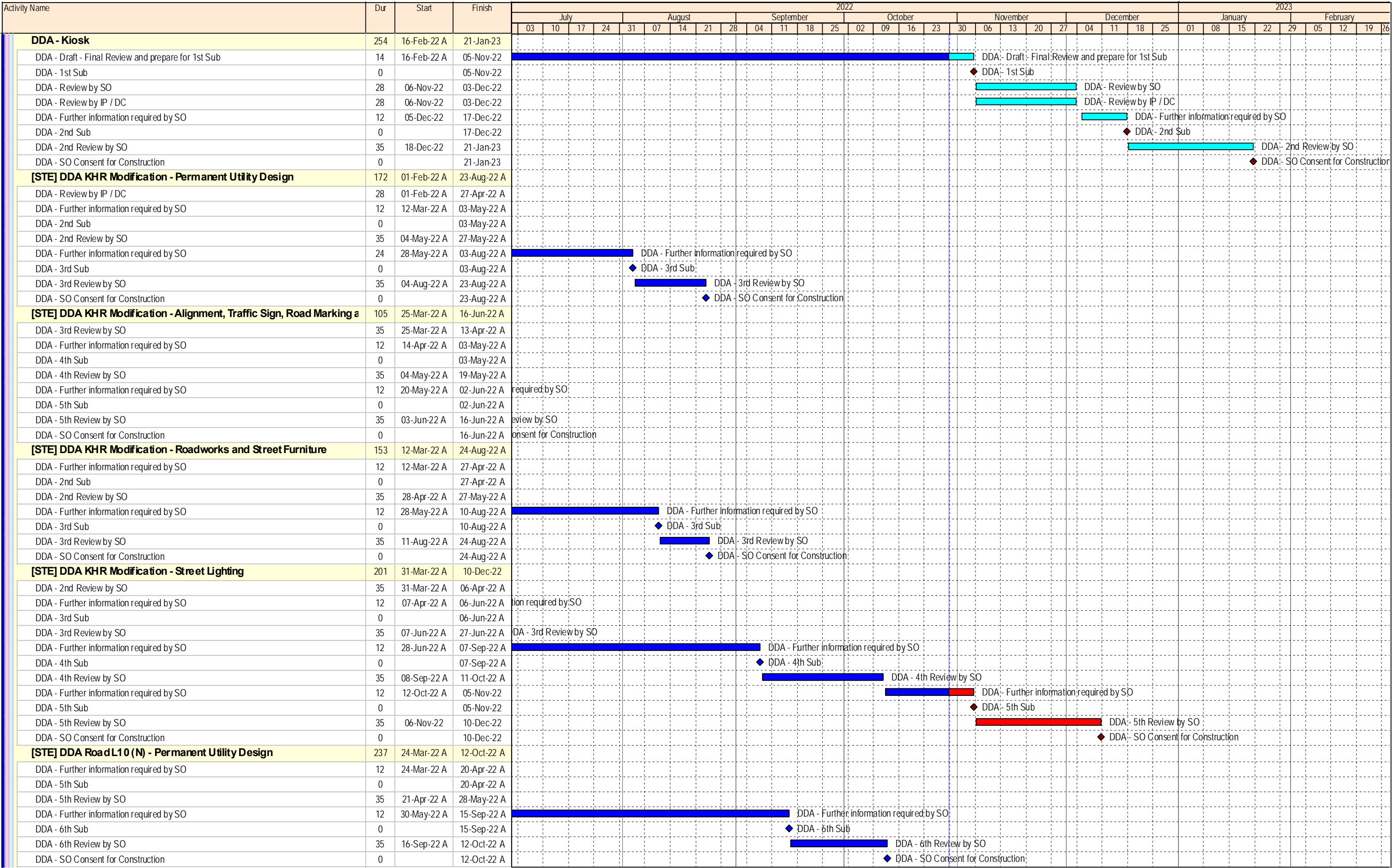
- ◆ Milestone
- ▬ Planned Bar
- ▬ Critical Activity
- ◆ Actual Milestone
- ▬ Actual Work

**ED/2018/04 Trunk Road T2 and Infrastructure Works
for Developments at South Apron**

Three Months Rolling Programme (Oct-22)



Date	Revision	Checked	Approved
18-Dec-19	00V1	WYu	
22-Feb-20	01V0	SPa/LLo	WYu
09-Apr-20	01V1	SPa/LLo	WYu
17-Jul-20	01V2	SPa/LLo	WYu
09-Oct-20	01V3	SPa/LLo	WYu
02-Jul-21	02V0	SPa/LLo	WYu



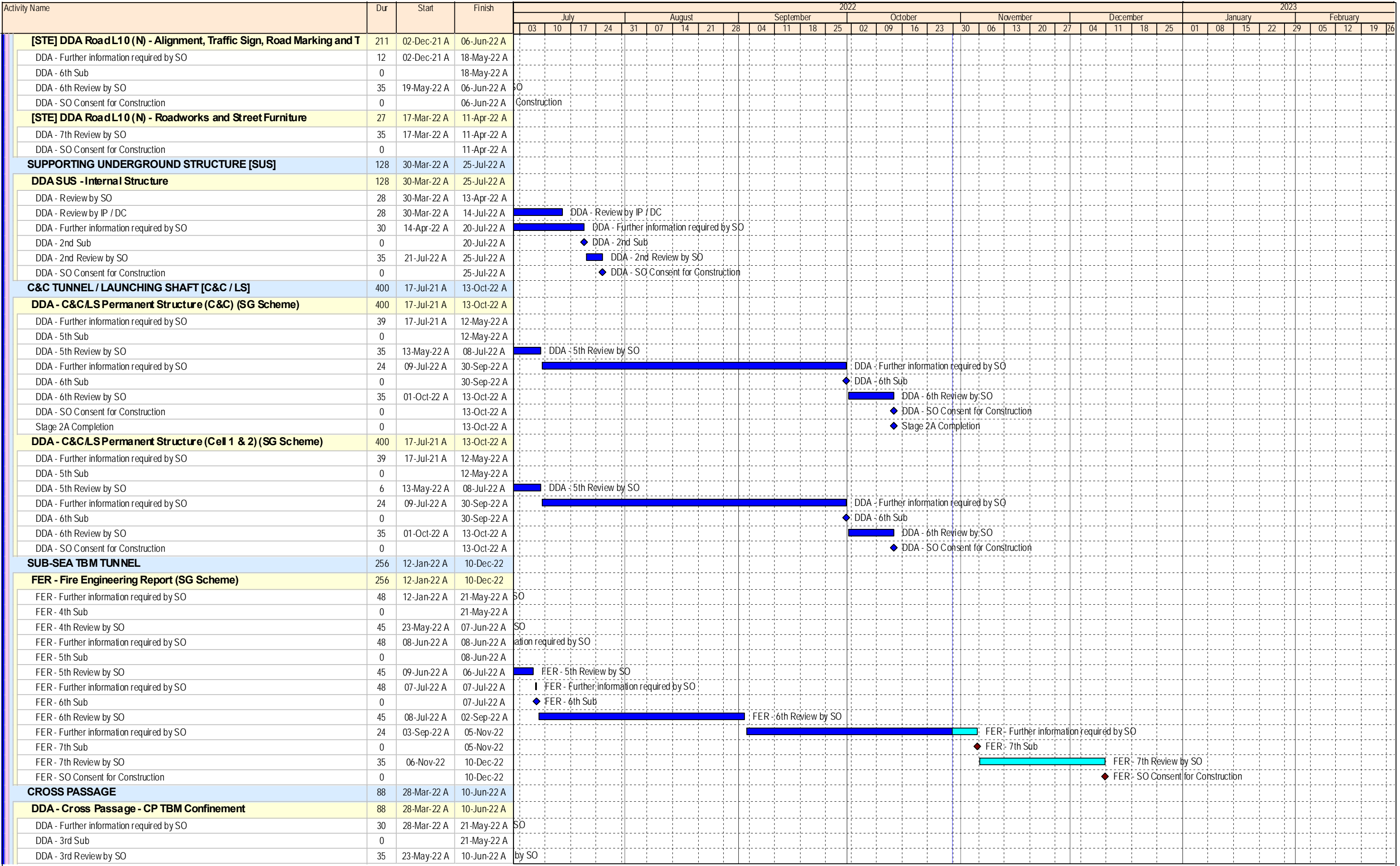
- ◆ Milestone
- [Cyan Bar] Planned Bar
- [Red Bar] Critical Activity
- ◆ Actual Milestone
- [Blue Bar] Actual Work

ED/2018/04 Trunk Road T2 and Infrastructure Works for Developments at South Apron

Three Months Rolling Programme (Oct-22)



Date	Revision	Checked	Approved
18-Dec-19	00V1	WYu	
22-Feb-20	01V0	SPa/LLo	WYu
09-Apr-20	01V1	SPa/LLo	WYu
17-Jul-20	01V2	SPa/LLo	WYu
09-Oct-20	01V3	SPa/LLo	WYu
02-Jul-21	02V0	SPa/LLo	WYu



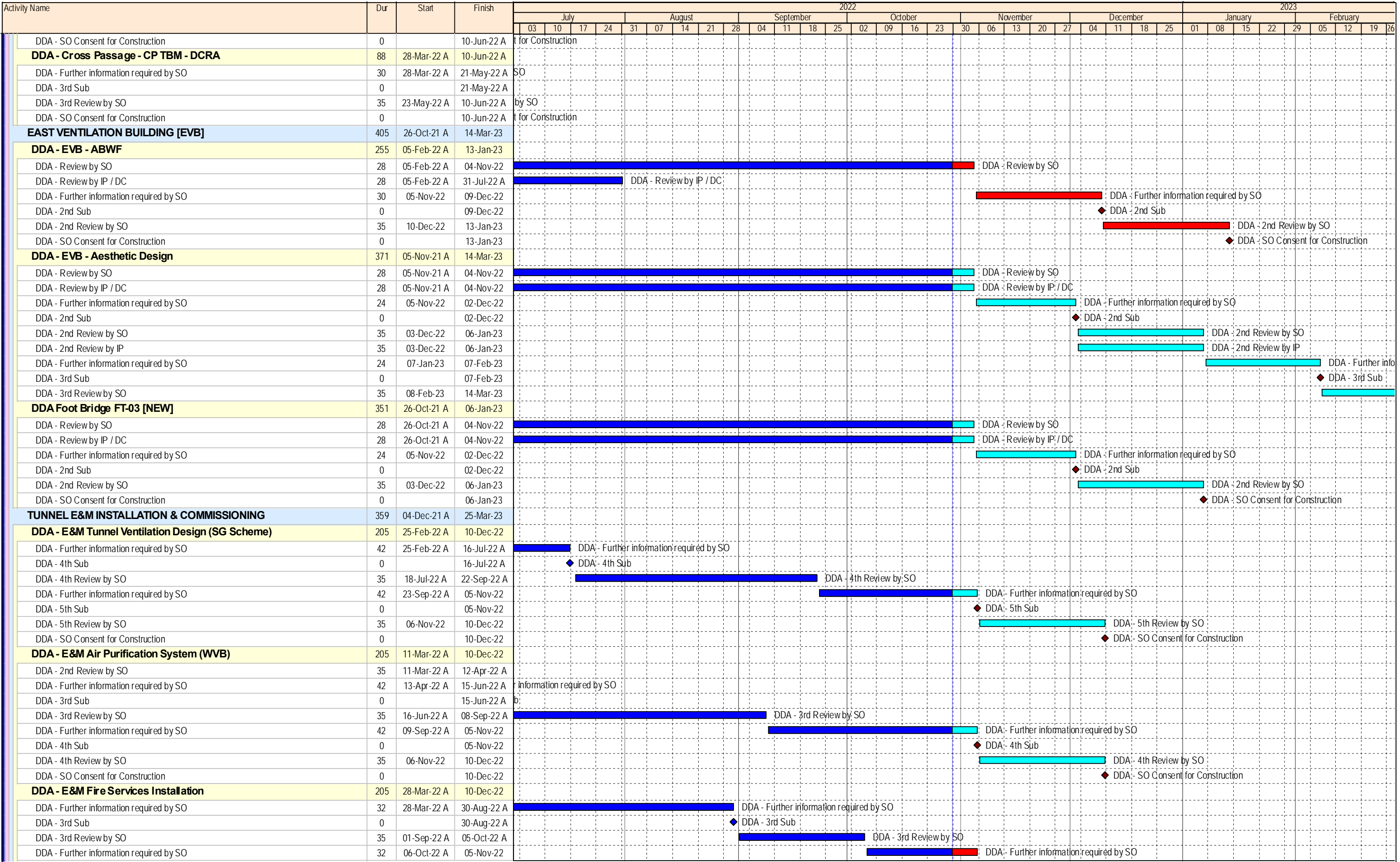
- ◆ Milestone
- Planned Bar
- Critical Activity
- ◆ Actual Milestone
- Actual Work

ED/2018/04 Trunk Road T2 and Infrastructure Works for Developments at South Apron

Three Months Rolling Programme (Oct-22)



Date	Revision	Checked	Approved
18-Dec-19	00V1	WYu	
22-Feb-20	01V0	SPa/LLo	WYu
09-Apr-20	01V1	SPa/LLo	WYu
17-Jul-20	01V2	SPa/LLo	WYu
09-Oct-20	01V3	SPa/LLo	WYu
02-Jul-21	02V0	SPa/LLo	WYu



- ◆ Milestone
- Planned Bar
- Critical Activity
- ◆ Actual Milestone
- Actual Work

ED/2018/04 Trunk Road T2 and Infrastructure Works for Developments at South Apron

Three Months Rolling Programme (Oct-22)



Date	Revision	Checked	Approved
18-Dec-19	00V1	WYu	
22-Feb-20	01V0	SPa/LLo	WYu
09-Apr-20	01V1	SPa/LLo	WYu
17-Jul-20	01V2	SPa/LLo	WYu
09-Oct-20	01V3	SPa/LLo	WYu
02-Jul-21	02V0	SPa/LLo	WYu

Activity Name	Dur	Start	Finish	2022																														
				July				August				September				October				November				December				2023						
				03	10	17	24	31	07	14	21	28	04	11	18	25	02	09	16	23	30	06	13	20	27	04	11	18	25	01	08	15	22	29
22.1.5 Complete T&C of DCS system 1	0		13-Jun-22 A	T&C of DCS system 1																														
22.1.6 Complete whole activities of this cost centre 1	0		13-Jul-22 A	◆ 22.1.6 Complete whole activities of this cost centre 1																														
34.1 Common Utilities Enclosure (CUE) under Section 6A of the Works	0	24-Dec-22	24-Dec-22																															
34.1.19 Complete whole activities of this cost centre 1	0		24-Dec-22	◆ 34.1.19 Complete whole activities of this cost centre 1																														
34.2 Common Utilities Enclosure (CUE) under Section 13 of the Works	117	13-Aug-22 A	11-Feb-23																															
34.2.4 Complete concrete works of base slab of CUE 0.5	0		13-Aug-22 A	◆ 34.2.4 Complete concrete works of base slab of CUE 0.5																														
34.2.8 Complete concrete works of walls of CUE 0.5	0		13-Oct-22 A	◆ 34.2.8 Complete concrete works of walls of CUE 0.5																														
34.2.12 Complete concrete works of top slab of CUE 0.5	0		13-Oct-22 A	◆ 34.2.12 Complete concrete works of top slab of CUE 0.5																														
34.2.2 Complete excavation of CUE	0		14-Dec-22	◆ 34.2.2 Complete excavation of CUE																														
34.2.9 Complete concrete works of walls of CUE 0.75	0		16-Jan-23	◆ 34.2.9 Complete concrete works of walls of CUE 0.75																														
34.2.5 Complete concrete works of base slab of CUE 0.75	0		11-Feb-23	◆ 34.2.5 Complete concrete works of base slab of CUE 0.75																														
35 Services Gallery	292	13-Apr-22 A	22-Feb-23																															
35.16 Complete 20% of total length (measured on plan) of SG structures in Drill-and-Break	0		13-Apr-22 A	Drill-and-Break and Drill-and-Blast Tunnel																														
35.32 Complete 50% of total volume (measured on plan) of excavation for Lower Basemen	0		13-Apr-22 A	Lower Basement of East Ventilation Building																														
35.33 Complete 75% of total volume (measured on plan) of excavation for Lower Basemen	0		13-Jun-22 A	75% of total volume (measured on plan) of excavation for Lower Basement of East Ventilation Building																														
35.18 Complete 60% of total length (measured on plan) of SG structures in Drill-and-Break	0		13-Sep-22 A	◆ 35.18 Complete 60% of total length (measured on plan) of SG structures in Drill-and-Break and Drill-and-Blast Tunnel																														
35.21 Complete 10% of total length (measured on plan) of Services Gallery structures and	0		13-Sep-22 A	◆ 35.21 Complete 10% of total length (measured on plan) of Services Gallery structures and ancillaries in TBM Tunnel																														
35.34 Complete 100% of total volume (measured on plan) of excavation for Lower Baseme	0		13-Sep-22 A	◆ 35.34 Complete 100% of total volume (measured on plan) of excavation for Lower Basement of East Ventilation Building																														
35.35 Complete concreting works of 25% of the total gross plan area for the Lower Baseme	0		13-Oct-22 A	◆ 35.35 Complete concreting works of 25% of the total gross plan area for the Lower Basement of East Ventilation Building																														
35.14 Complete 80% of total length (measured on plan) of SG excavation in Drill-and-Break	0		29-Oct-22	◆ 35.14 Complete 80% of total length (measured on plan) of SG excavation in Drill-and-Break and Drill-and-Blast Tunnel																														
35.36 Complete concreting works of 50% of the total gross plan area for the Lower Baseme	0		26-Nov-22	◆ 35.36 Complete concreting works of 50% of the total gross plan area for the Lower Basement of East Ventilation Building																														
35.15 Complete 100% of total length (measured on plan) of SG excavation in Drill-and-Break	0		30-Nov-22	◆ 35.15 Complete 100% of total length (measured on plan) of SG excavation in Drill-and-Break and Drill-and-Blast Tunnel																														
35.22 Complete 20% of total length (measured on plan) of Services Gallery structures and	0		13-Dec-22	◆ 35.22 Complete 20% of total length (measured on plan) of Services Gallery structures and ancillaries in TBM Tunnel																														
35.23 Complete 30% of total length (measured on plan) of Services Gallery structures and	0		14-Jan-23	◆ 35.23 Complete 30% of total length (measured on plan) of Services Gallery structures and ancillaries in TBM Tunnel																														
35.24 Complete 40% of total length (measured on plan) of Services Gallery structures and	0		16-Feb-23	◆ 35.24 Complete 40% of total length (measured on plan) of Services Gallery structures and ancillaries in TBM Tunnel																														
35.37 Complete concreting works of 75% of the total gross plan area for the Lower Baseme	0		22-Feb-23	◆ 35.37 Complete concreting works of 75% of the total gross plan area for the Lower Basement of East Ventilation Building																														
35.38 Complete concreting works of 100% of the total gross plan area for the Lower Basem	0		22-Feb-23	◆ 35.38 Complete concreting works of 100% of the total gross plan area for the Lower Basement of East Ventilation Building																														
SOUTH APRON EXTERNAL WORKS	940	21-Oct-21 A	19-Dec-24																															
Road S20	717	21-Oct-21 A	21-Mar-24																															
CUE (Section 6A)	213	28-Dec-21 A	17-Aug-22 A																															
CKR Crossing	40	30-May-22 A	05-Jul-22 A																															
BS/E&M	40	30-May-22 A	05-Jul-22 A																															
CUE L10(N) Watermain (100m, 30m/wk)	40	30-May-22 A	05-Jul-22 A	■ CUE L10(N) Watermain (100m, 30m/wk)																														
Entrance	164	26-Jan-22 A	17-Aug-22 A																															
Structure	6	26-Jan-22 A	11-Apr-22 A																															
Entrance - Strength & Falsework dismantle	6	26-Jan-22 A	11-Apr-22 A																															
BS/E&M	72	11-Apr-22 A	17-Aug-22 A																															
Entrance - E&M Installation	72	11-Apr-22 A	17-Aug-22 A	■ Entrance - E&M Installation																														
Junction	194	28-Dec-21 A	23-Jul-22 A																															
Structure	147	28-Dec-21 A	17-May-22 A																															
Junction - Structure (Wall & Top Slab)	12	28-Dec-21 A	19-Apr-22 A																															
Junction - Waterproofing, Backfill & Remove S2	9	20-Apr-22 A	30-Apr-22 A																															
Junction - Waterproofing, Backfill & Remove S1	9	30-Apr-22 A	10-May-22 A																															
Junction - Strength & Falsework dismantle	6	11-May-22 A	17-May-22 A																															
BS/E&M	45	24-May-22 A	23-Jul-22 A																															
Junction - E&M 1st Fix Installation	18	24-May-22 A	14-Jun-22 A	■ Junction - E&M 1st Fix Installation																														
Junction - E&M Installation	24	15-Jun-22 A	12-Jul-22 A	■ Junction - E&M Installation																														
Junction - Backfill	12	12-Jul-22 A	23-Jul-22 A	■ Junction - Backfill																														
S20 (Section 6A)	717	21-Oct-21 A	21-Mar-24																															
Future Carriageway - Stage 3	289	21-Oct-21 A	27-Aug-22 A																															
S20 Stage 3 (Drainage & Watermain near CUE)	30	21-Oct-21 A	20-May-22 A	■ S20 Stage 3 (Drainage & Watermain near CUE)																														
S20 Stage 3 (Catchpit, Gully)	24	24-May-22 A	21-Jun-22 A	■ S20 Stage 3 (Catchpit, Gully)																														
S20 Stage 3 (Watermain)	36	22-Jun-22 A	30-Jul-22 A	■ S20 Stage 3 (Watermain)																														
S20 Stage 3 (Roadworks)	24	01-Aug-22 A	27-Aug-22 A	■ S20 Stage 3 (Roadworks)																														

- ◆ Milestone
- Planned Bar
- Critical Activity
- ◆ Actual Milestone
- Actual Work

ED/2018/04 Trunk Road T2 and Infrastructure Works for Developments at South Apron

Three Months Rolling Programme (Oct-22)



Date	Revision	Checked	Approved
18-Dec-19	00V1	WYu	
22-Feb-20	01V0	SPa/LLo	WYu
09-Apr-20	01V1	SPa/LLo	WYu
17-Jul-20	01V2	SPa/LLo	WYu
09-Oct-20	01V3	SPa/LLo	WYu
02-Jul-21	02V0	SPa/LLo	WYu

Activity Name	Dur	Start	Finish	2022																												2023		
				July				August				September				October				November				December				January		February				
				03	10	17	24	31	07	14	21	28	04	11	18	25	02	09	16	23	30	06	13	20	27	04	11	18	25	01	08	15	22	29
Section 6B completion	0		10-Jun-22 A																															
[STE] District Cooling System - Remaining Section 7B	355	31-Jan-22 A	17-Apr-23																															
DCS (Pipe Jacking)	355	31-Jan-22 A	17-Apr-23																															
DCS - Pipe Jacking Sheet pile (1571m2, 55m2/d)	57	31-Jan-22 A	11-Apr-22 A																															
DCS - Receiving Pit Pre-treatment	12	01-Apr-22 A	19-Apr-22 A																															
DCS - Pipe Jacking Excavation (1772m3, 135m3/d + 6d per layer of strut)	37	12-Apr-22 A	06-Jul-22 A																															
DCS - Receiving Pit Sheet pile (1276m2, 55m2/d)	24	20-Apr-22 A	08-Oct-22 A																															
DCS - Pipe Jacking (90m, 2m/d + 31d set up & demob)	76	12-Sep-22 A	10-Dec-22																															
DCS - Receiving Pit Excavation (3200m3, 135m3/d + 6d per layer of strut)	48	10-Oct-22 A	19-Nov-22																															
DCS - Pipe Jacking Pipe Install (90m, 6m/5d) & Valve Pit (24d)	99	12-Dec-22	17-Apr-23																															
DCS (L10(S))	287	12-Mar-22 A	01-Mar-23																															
Pre-bored	18	24-May-22 A	29-Jun-22 A																															
DCS - L10(S) 4 Pre-treatment (404m, 36m/d/rig, 2rigs)	6	24-May-22 A	31-May-22 A																															
DCS - L10(S) 5 Pre-treatment (404m, 36m/d/rig, 2rigs)	6	06-Jun-22 A	11-Jun-22 A																															
DCS - L10(S) 6 Pre-treatment (404m, 36m/d/rig, 2rigs)	6	20-Jun-22 A	29-Jun-22 A																															
Sheet piles	173	12-Mar-22 A	22-Sep-22 A																															
DCS - L10(S) 2 Sheet pile (576m2, 55m2/d)	24	12-Mar-22 A	09-Apr-22 A																															
DCS - L10(S) 3 Sheet pile (830m2, 55m2/d)	24	11-Apr-22 A	13-May-22 A																															
DCS - L10(S) 4 Sheet pile (404m2, 55m2/d)	8	31-May-22 A	11-Jun-22 A																															
DCS - L10(S) 5 Sheet pile (404m2, 55m2/d)	8	13-Jun-22 A	18-Jun-22 A																															
DCS - L10(S) 6 Sheet pile (404m2, 55m2/d)	8	12-Sep-22 A	22-Sep-22 A																															
Excavation	129	13-Jun-22 A	03-Dec-22																															
DCS - L10(S) 1 Excavation (1109m3, 40m3/d)	28	13-Jun-22 A	17-Aug-22 A																															
DCS - L10(S) 2 Excavation (1109m3, 40m3/d)	28	13-Jun-22 A	25-Aug-22 A																															
DCS - L10(S) 3 Excavation (1920m3, 40m3/d)	48	13-Jun-22 A	10-Sep-22 A																															
DCS - L10(S) 4 Excavation (564m3, 40m3/d)	15	12-Sep-22 A	30-Sep-22 A																															
DCS - L10(S) 5 Excavation (564m3, 40m3/d)	15	31-Oct-22	16-Nov-22																															
DCS - L10(S) 6 Excavation (564m3, 40m3/d)	15	17-Nov-22	03-Dec-22																															
DCS Set up	79	26-Aug-22 A	08-Dec-22																															
DCS - L10(S) 1 Pipe Installation - Set up	4	26-Aug-22 A	30-Sep-22 A																															
DCS - L10(S) 2 Pipe Installation - Set up	4	08-Oct-22 A	17-Oct-22 A																															
DCS - L10(S) 3 Pipe Installation - Pit	12	14-Oct-22 A	20-Oct-22 A																															
DCS - L10(S) 3 Pipe Installation - Set up	4	20-Oct-22 A	25-Oct-22 A																															
DCS - L10(S) 4 Pipe Installation - Set up	4	31-Oct-22	03-Nov-22																															
DCS - L10(S) 5 Pipe Installation - Set up	4	17-Nov-22	21-Nov-22																															
DCS - L10(S) 6 Pipe Installation - Set up	4	05-Dec-22	08-Dec-22																															
DCS welding	38	03-Oct-22 A	13-Dec-22																															
DCS - L10(S) 1 Pipe Installation - Pipe welding (3nos/d)	4	03-Oct-22 A	15-Oct-22 A																															
DCS - L10(S) 2 Pipe Installation - Pipe welding (3nos/d)	4	24-Oct-22 A	03-Nov-22																															
DCS - L10(S) 3 Pipe Installation - Pipe welding (3nos/d)	4	04-Nov-22	08-Nov-22																															
DCS - L10(S) 4 Pipe Installation - Pipe welding (3nos/d)	4	09-Nov-22	12-Nov-22																															
DCS - L10(S) 5 Pipe Installation - Pipe welding (3nos/d)	4	22-Nov-22	25-Nov-22																															
DCS - L10(S) 6 Pipe Installation - Pipe welding (3nos/d)	4	09-Dec-22	13-Dec-22																															
Electrofusion	48	31-Oct-22	24-Dec-22																															
DCS - L10(S) 1 Pipe Installation - Electrofusion joint (1.5nos/d)	8	31-Oct-22	08-Nov-22																															
DCS - L10(S) 2 Pipe Installation - Electrofusion joint (1.5nos/d)	8	09-Nov-22	17-Nov-22																															
DCS - L10(S) 3 Pipe Installation - Electrofusion joint (1.5nos/d)	8	18-Nov-22	26-Nov-22																															
DCS - L10(S) 4 Pipe Installation - Electrofusion joint (1.5nos/d)	8	28-Nov-22	06-Dec-22																															
DCS - L10(S) 5 Pipe Installation - Electrofusion joint (1.5nos/d)	8	07-Dec-22	15-Dec-22																															
DCS - L10(S) 6 Pipe Installation - Electrofusion joint (1.5nos/d)	8	16-Dec-22	24-Dec-22																															
Backfill	72	09-Nov-22	07-Feb-23																															
DCS - L10(S) 1 Backfill	12	09-Nov-22	22-Nov-22																															
DCS - L10(S) 2 Backfill	12	23-Nov-22	06-Dec-22																															
DCS - L10(S) 3 Backfill	12	07-Dec-22	20-Dec-22																															

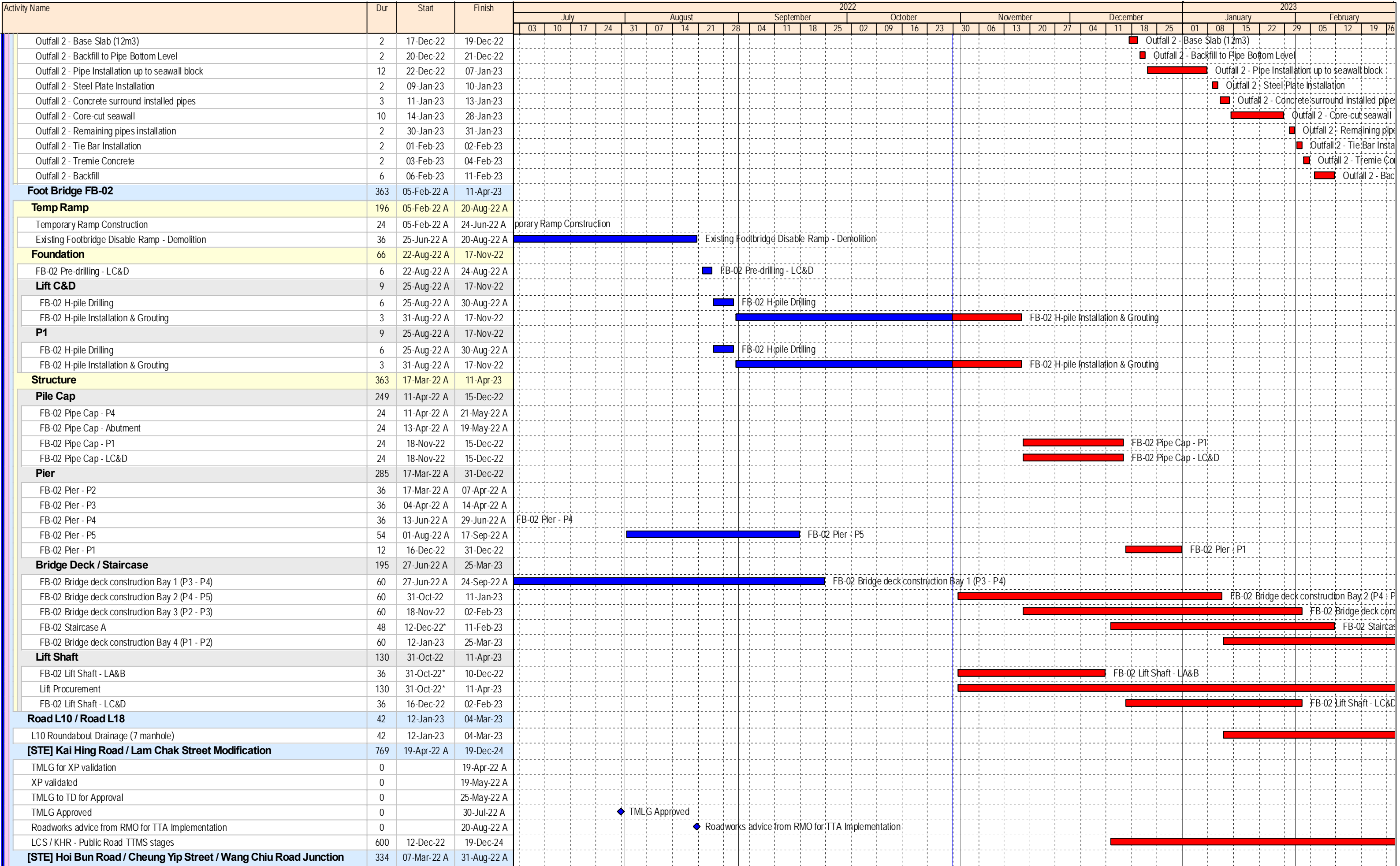
- ◆ Milestone
- ▬ Planned Bar
- ▬ Critical Activity
- ◆ Actual Milestone
- ▬ Actual Work

ED/2018/04 Trunk Road T2 and Infrastructure Works for Developments at South Apron

Three Months Rolling Programme (Oct-22)



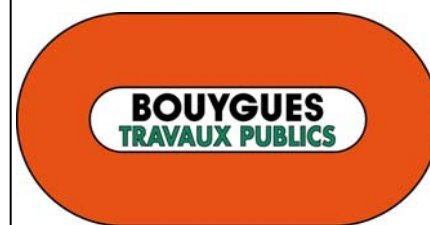
Date	Revision	Checked	Approved
18-Dec-19	00V1	WYu	
22-Feb-20	01V0	SPa/LLo	WYu
09-Apr-20	01V1	SPa/LLo	WYu
17-Jul-20	01V2	SPa/LLo	WYu
09-Oct-20	01V3	SPa/LLo	WYu
02-Jul-21	02V0	SPa/LLo	WYu



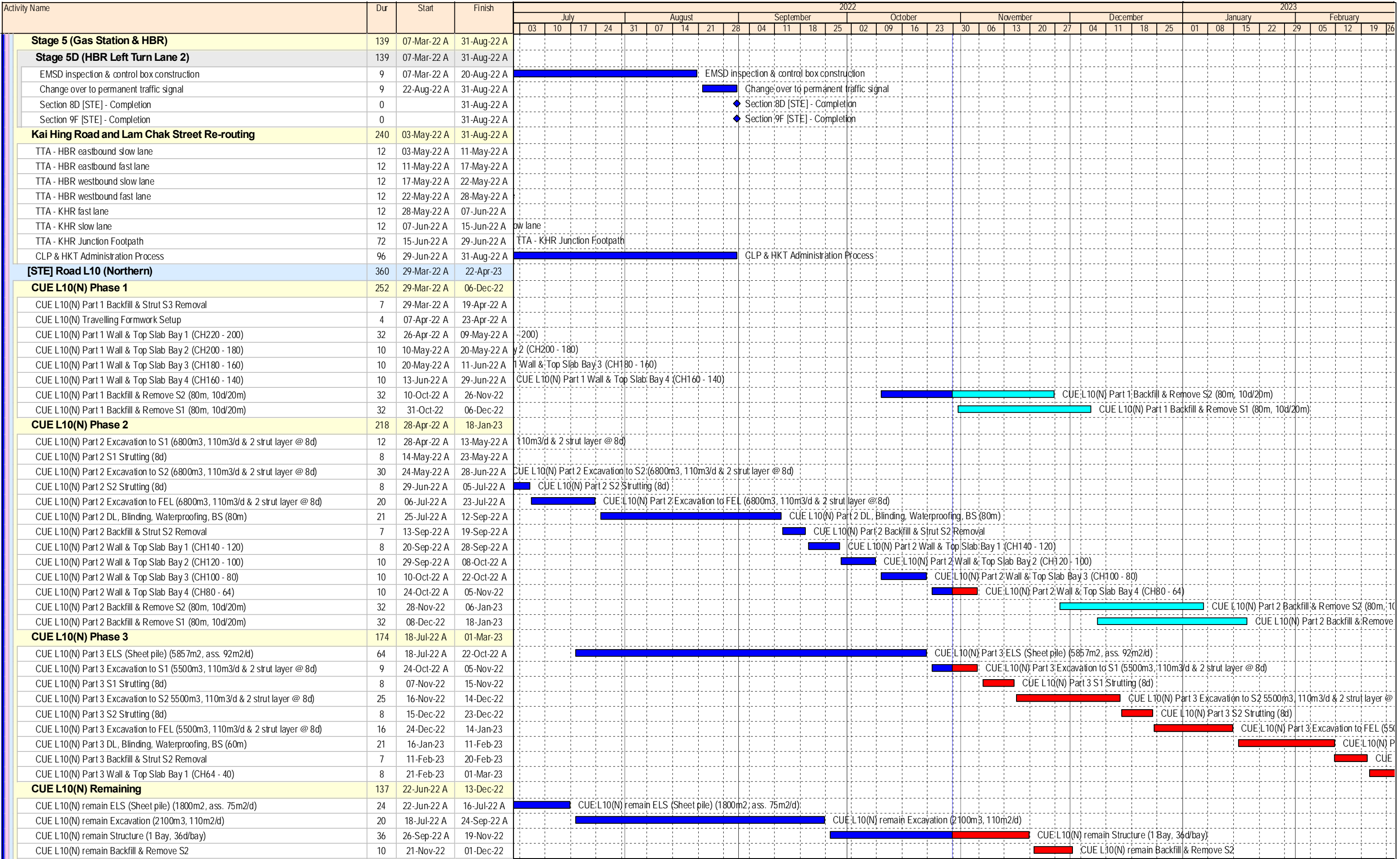
- Milestone
- Planned Bar
- Critical Activity
- Actual Milestone
- Actual Work

ED/2018/04 Trunk Road T2 and Infrastructure Works for Developments at South Apron

Three Months Rolling Programme (Oct-22)



Date	Revision	Checked	Approved
18-Dec-19	00V1	WYu	
22-Feb-20	01V0	SPa/LLo	WYu
09-Apr-20	01V1	SPa/LLo	WYu
17-Jul-20	01V2	SPa/LLo	WYu
09-Oct-20	01V3	SPa/LLo	WYu
02-Jul-21	02V0	SPa/LLo	WYu



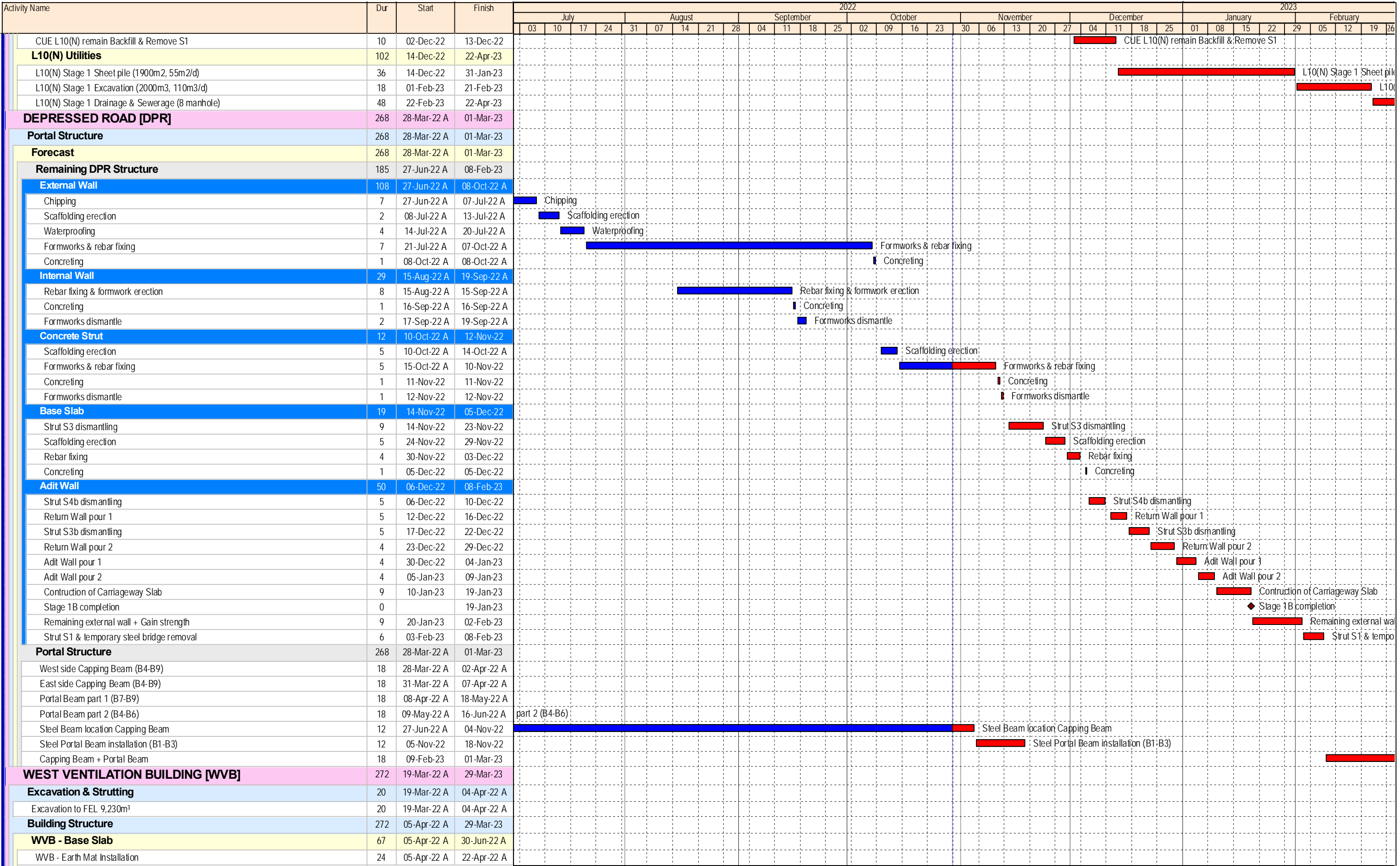
- ◆ Milestone
- Planned Bar
- Critical Activity
- ◆ Actual Milestone
- Actual Work

ED/2018/04 Trunk Road T2 and Infrastructure Works for Developments at South Apron

Three Months Rolling Programme (Oct-22)



Date	Revision	Checked	Approved
18-Dec-19	00V1	WYu	
22-Feb-20	01V0	SPa/Lo	WYu
09-Apr-20	01V1	SPa/Lo	WYu
17-Jul-20	01V2	SPa/Lo	WYu
09-Oct-20	01V3	SPa/Lo	WYu
02-Jul-21	02V0	SPa/Lo	WYu



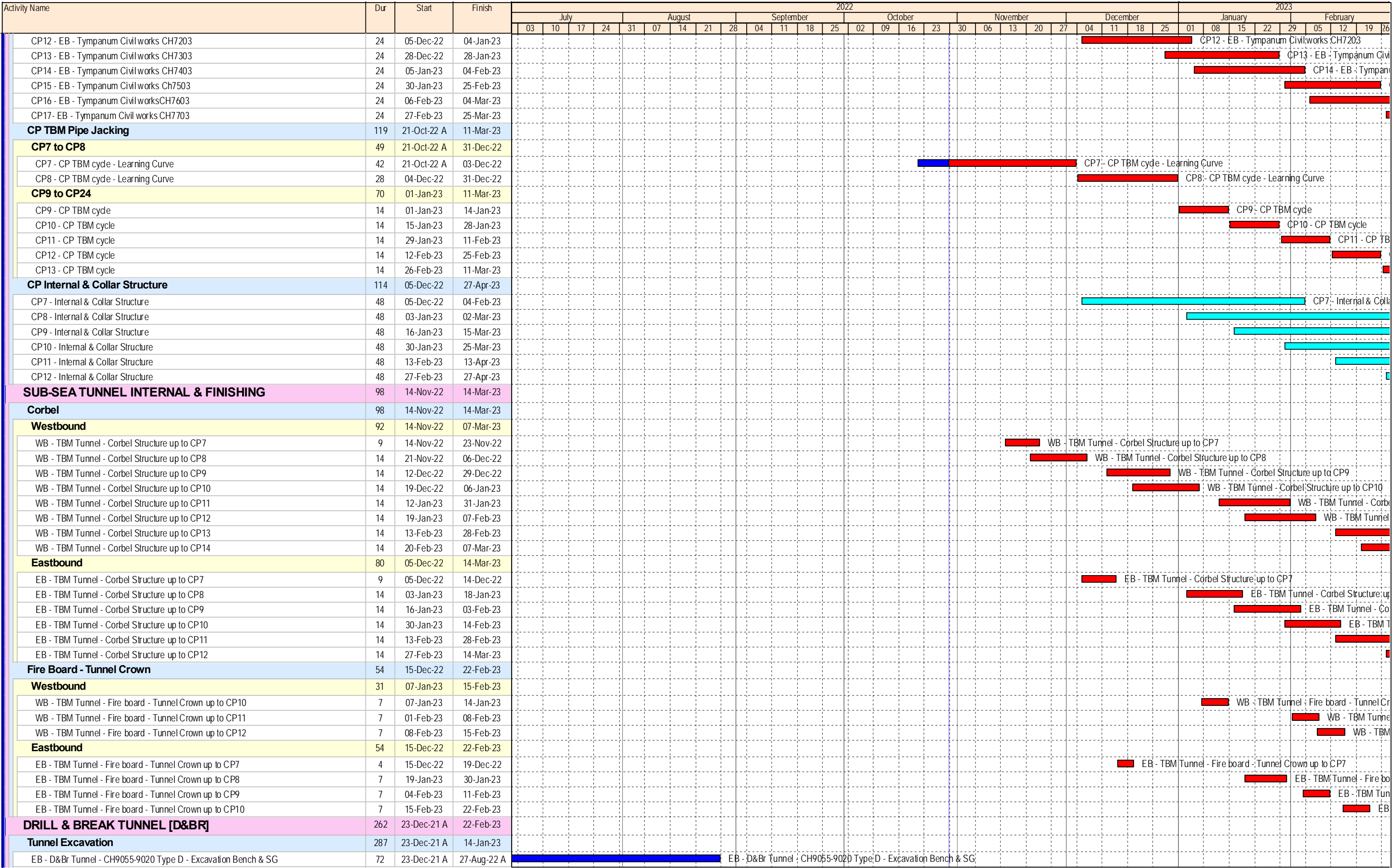
- ◆ Milestone
- ▬ Planned Bar
- ▬ Critical Activity
- ◆ Actual Milestone
- ▬ Actual Work

ED/2018/04 Trunk Road T2 and Infrastructure Works for Developments at South Apron

Three Months Rolling Programme (Oct-22)



Date	Revision	Checked	Approved
18-Dec-19	00V1	WYu	
22-Feb-20	01V0	SPa/LLo	WYu
09-Apr-20	01V1	SPa/LLo	WYu
17-Jul-20	01V2	SPa/LLo	WYu
09-Oct-20	01V3	SPa/LLo	WYu
02-Jul-21	02V0	SPa/LLo	WYu



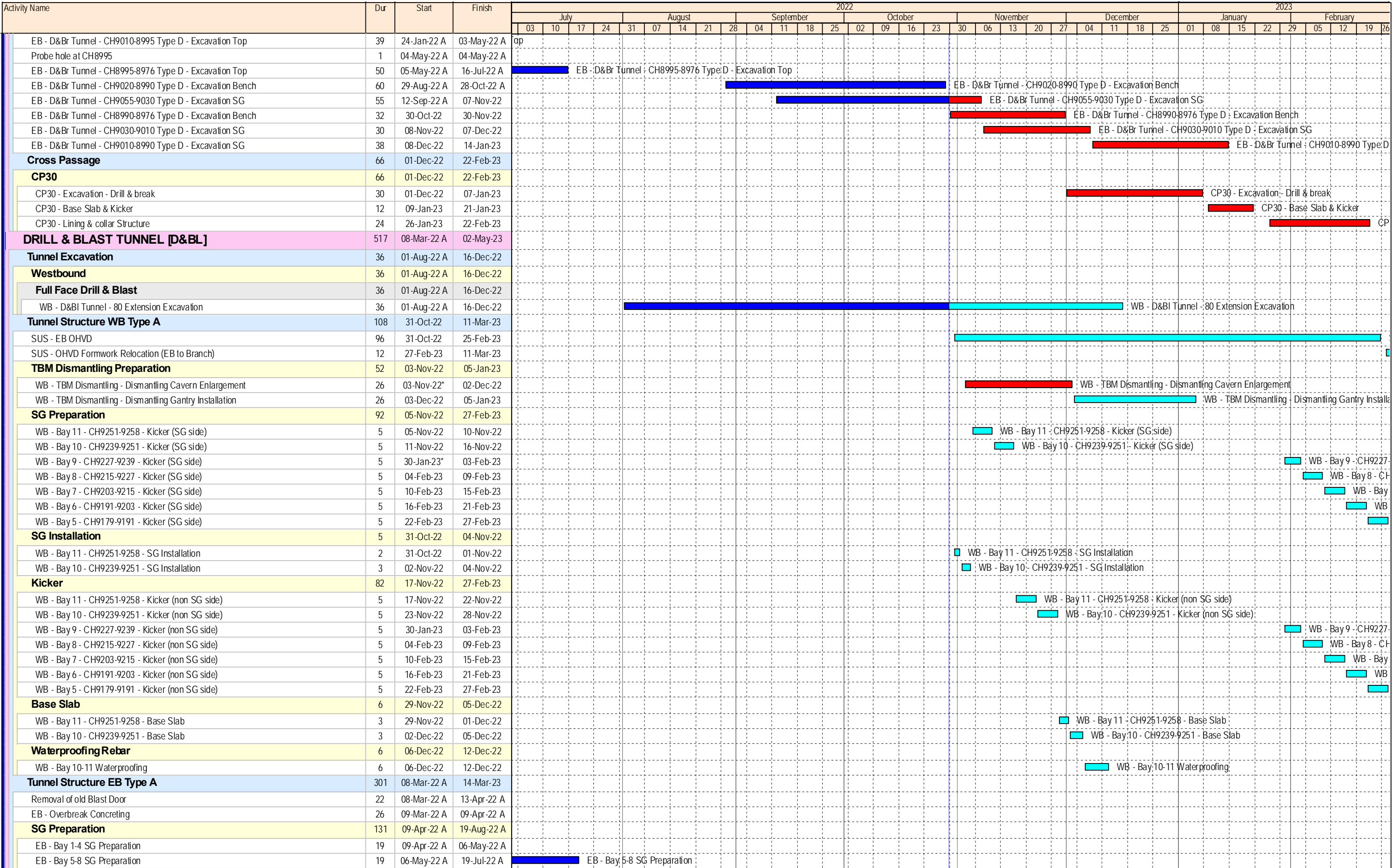
- Milestone
- Planned Bar
- Critical Activity
- Actual Milestone
- Actual Work

ED/2018/04 Trunk Road T2 and Infrastructure Works for Developments at South Apron

Three Months Rolling Programme (Oct-22)



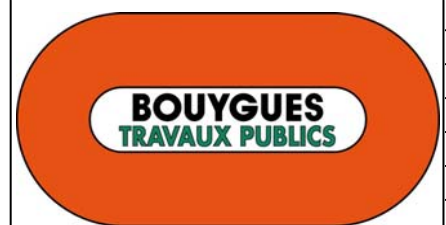
Date	Revision	Checked	Approved
18-Dec-19	00V1	WYu	
22-Feb-20	01V0	SPa/LLo	WYu
09-Apr-20	01V1	SPa/LLo	WYu
17-Jul-20	01V2	SPa/LLo	WYu
09-Oct-20	01V3	SPa/LLo	WYu
02-Jul-21	02V0	SPa/LLo	WYu



- ◆ Milestone
- Planned Bar
- Critical Activity
- ◆ Actual Milestone
- Actual Work

ED/2018/04 Trunk Road T2 and Infrastructure Works for Developments at South Apron

Three Months Rolling Programme (Oct-22)



Date	Revision	Checked	Approved
18-Dec-19	00V1	WYu	
22-Feb-20	01V0	SPa/LLo	WYu
09-Apr-20	01V1	SPa/LLo	WYu
17-Jul-20	01V2	SPa/LLo	WYu
09-Oct-20	01V3	SPa/LLo	WYu
02-Jul-21	02V0	SPa/LLo	WYu

Activity Name	Dur	Start	Finish	2022																												2023		
				July				August				September				October				November				December				January		February				
				03	10	17	24	31	07	14	21	28	04	11	18	25	02	09	16	23	30	06	13	20	27	04	11	18	25	01	08	15	22	29
EB - Bay 6 - CH9201-9213 - Kicker (SG side)	5	20-Jun-22 A	27-Jun-22 A	B - Bay 6 - CH9201-9213 - Kicker (SG side)																														
EB - Bay 4 - CH9177-9189 - Kicker (SG side)	5	24-Jun-22 A	29-Jun-22 A	EB - Bay 4 - CH9177-9189 - Kicker (SG side)																														
EB - Bay 5 - CH9189-9201 - Kicker (SG side)	5	30-Jun-22 A	05-Jul-22 A	EB - Bay 5 - CH9189-9201 - Kicker (SG side)																														
EB - Bay 2.2 - CH9159-9165 - Kicker (SG side)	5	12-Jul-22 A	16-Jul-22 A	EB - Bay 2.2 - CH9159-9165 - Kicker (SG side)																														
EB - Bay 3 - CH9165-9177 - Kicker (SG side)	5	13-Jul-22 A	18-Jul-22 A	EB - Bay 3 - CH9165-9177 - Kicker (SG side)																														
EB - Bay 2.1 - CH9147-9159 - Kicker (SG side)	5	16-Jul-22 A	21-Jul-22 A	EB - Bay 2.1 - CH9147-9159 - Kicker (SG side)																														
EB - Bay 1 - CH9135-9147 - Kicker (SG side)	5	09-Aug-22 A	13-Aug-22 A	EB - Bay 1 - CH9135-9147 - Kicker (SG side)																														
EB - Bay 7 - CH9213-9225 - Kicker (SG side)	5	15-Aug-22 A	19-Aug-22 A	EB - Bay 7 - CH9213-9225 - Kicker (SG side)																														
SG Installation	86	21-Apr-22 A	11-Jun-22 A																															
EB - Bay 1 - CH9135-9147 - SG Installation	3	21-Apr-22 A	25-Apr-22 A																															
EB - Bay 2.1 - CH9147-9159 - SG Installation	3	25-Apr-22 A	28-Apr-22 A																															
EB - Bay 2.2 - CH9159-9165 - SG Installation	3	28-Apr-22 A	03-May-22 A																															
EB - Bay 3 - CH9165-9177 - SG Installation	3	03-May-22 A	06-May-22 A																															
EB - Bay 4 - CH9177-9189 - SG Installation	3	06-May-22 A	11-May-22 A																															
EB - Bay 5 - CH9189-9201 - SG Installation	3	16-May-22 A	19-May-22 A																															
EB - Bay 6 - CH9201-9213 - SG Installation	3	19-May-22 A	23-May-22 A																															
EB - Bay 7 - CH9213-9225 - SG Installation	3	06-Jun-22 A	11-Jun-22 A																															
Kicker	103	11-May-22 A	16-Sep-22 A																															
EB - Bay 1 - CH9135-9147 - Kicker (non SG side)	5	11-May-22 A	17-May-22 A																															
EB - Bay 2.1 - CH9147-9159 - Kicker (non SG side)	5	17-May-22 A	23-May-22 A																															
EB - Bay 5 - CH9189-9201 - Kicker (non SG side)	5	01-Jun-22 A	07-Jun-22 A																															
EB - Bay 6 - CH9201-9213 - Kicker (non SG side)	5	06-Jun-22 A	10-Jun-22 A																															
EB - Bay 2.2 - CH9159-9165 - Kicker (non SG side)	5	17-Jun-22 A	23-Jun-22 A																															
EB - Bay 3 - CH9165-9177 - Kicker (non SG side)	5	06-Jul-22 A	11-Jul-22 A																															
EB - Bay 7 - CH9213-9225 - Kicker (non SG side)	5	18-Jul-22 A	23-Jul-22 A																															
EB - Bay 4 - CH9177-9189 - Kicker (non SG side)	5	17-Aug-22 A	16-Sep-22 A																															
Base Slab	40	01-Aug-22 A	31-Aug-22 A																															
EB - Bay 1 - CH9135-9147 - Base Slab	5	01-Aug-22 A	05-Aug-22 A																															
EB - Bay 2.1 - CH9147-9159 - Base Slab	5	06-Aug-22 A	10-Aug-22 A																															
EB - Bay 2.2 - CH9159-9165 - Base Slab	5	11-Aug-22 A	13-Aug-22 A																															
EB - Bay 3 - CH9165-9177 - Base Slab	5	15-Aug-22 A	17-Aug-22 A																															
EB - Bay 4 - CH9177-9189 - Base Slab	5	18-Aug-22 A	20-Aug-22 A																															
EB - Bay 5 - CH9189-9201 - Base Slab	5	22-Aug-22 A	24-Aug-22 A																															
EB - Bay 6 - CH9201-9213 - Base Slab	5	25-Aug-22 A	27-Aug-22 A																															
EB - Bay 7 - CH9213-9225 - Base Slab	5	29-Aug-22 A	31-Aug-22 A																															
Waterproofing Rebar	86	08-Aug-22 A	22-Sep-22 A																															
EB - Bay 1-4 UU rearrange	12	08-Aug-22 A	17-Aug-22 A																															
EB - Bay 1 Waterproofing	9	08-Aug-22 A	13-Aug-22 A																															
EB - Bay 2.1 Waterproofing	9	11-Aug-22 A	15-Aug-22 A																															
EB - Bay 2.2 Waterproofing	9	16-Aug-22 A	20-Aug-22 A																															
EB - Bay 3 Waterproofing	9	22-Aug-22 A	26-Aug-22 A																															
EB - Bay 4 Waterproofing	9	26-Aug-22 A	29-Aug-22 A																															
EB - Bay 5-8 UU rearrange	12	30-Aug-22 A	22-Sep-22 A																															
EB - Bay 5 Waterproofing	9	31-Aug-22 A	02-Sep-22 A																															
EB - Bay 6 Waterproofing	9	01-Sep-22 A	03-Sep-22 A																															
Lining	68	12-Sep-22 A	07-Feb-23																															
EB - Lining Fwk Type A Assembly	30	12-Sep-22 A	12-Nov-22																															
EB - D&BI Tunnel - CH9225-9135 Type A&B - Lining Structure	40	14-Nov-22	31-Dec-22																															
EB - D&BI Tunnel - CH9225-9240 Type A&B - Lining Structure	16	03-Jan-23	20-Jan-23																															
EB - Lining Fwk Type A Dismantling (Portal)	12	21-Jan-23	07-Feb-23																															
OHVD	30	08-Feb-23	14-Mar-23																															
EB - OHVD Slab Fwk Type A Assembly	30	08-Feb-23*	14-Mar-23																															
Tunnel Structure EB Type C	294	19-Apr-22 A	15-Apr-23																															
EB - Earth Mat 9-11 Drilling	8	19-Apr-22 A	27-Apr-22 A																															
EB - Earth Mat 9-11 Drilling, Installation and Testing	11	22-Apr-22 A	06-May-22 A																															

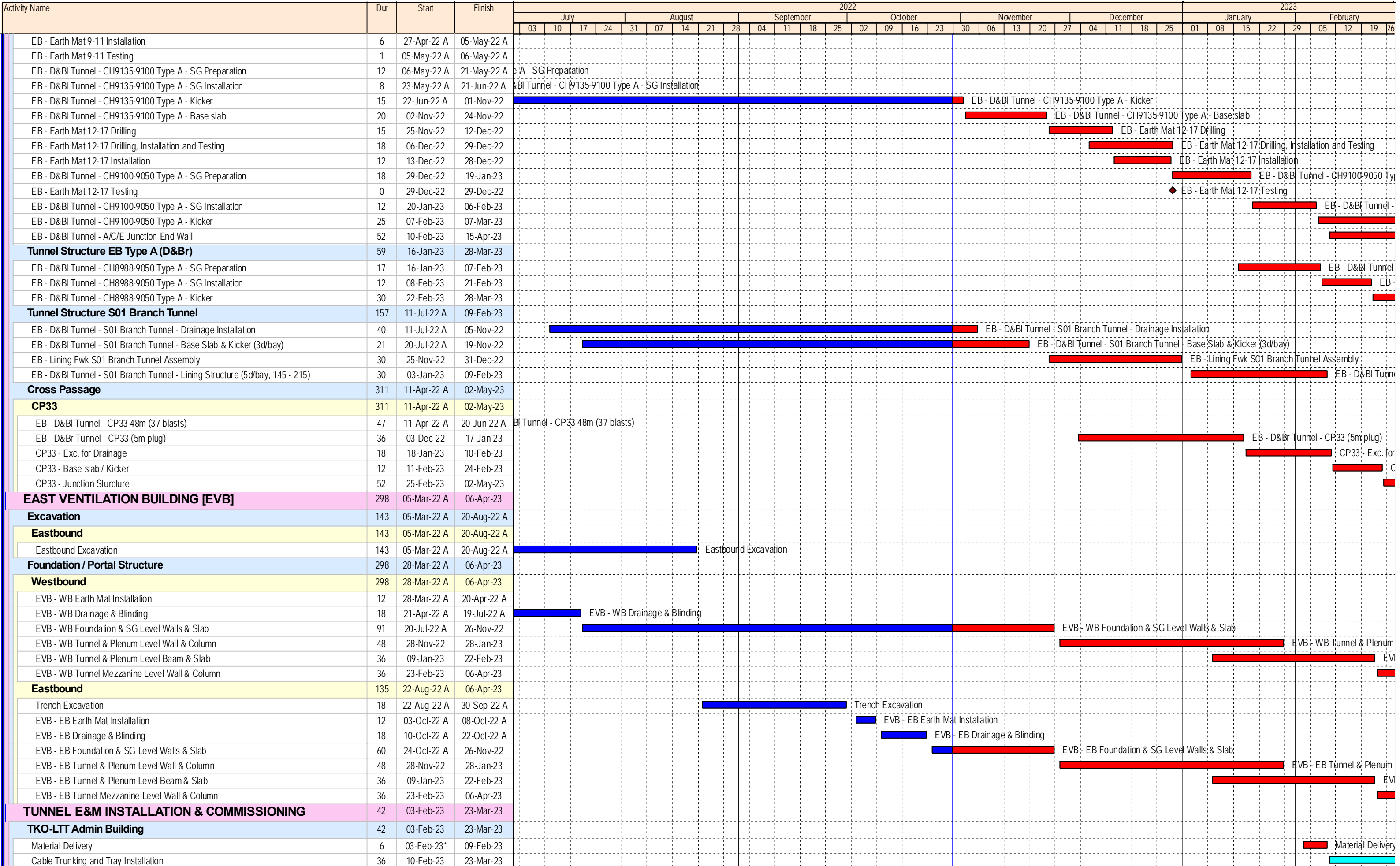
- ◆ Milestone
- Planned Bar
- Critical Activity
- ◆ Actual Milestone
- Actual Work

ED/2018/04 Trunk Road T2 and Infrastructure Works for Developments at South Apron

Three Months Rolling Programme (Oct-22)



Date	Revision	Checked	Approved
18-Dec-19	00V1	WYu	
22-Feb-20	01V0	SPa/LLo	WYu
09-Apr-20	01V1	SPa/LLo	WYu
17-Jul-20	01V2	SPa/LLo	WYu
09-Oct-20	01V3	SPa/LLo	WYu
02-Jul-21	02V0	SPa/LLo	WYu



- ◆ Milestone
- Planned Bar
- Critical Activity
- ◆ Actual Milestone
- Actual Work

ED/2018/04 Trunk Road T2 and Infrastructure Works for Developments at South Apron


Three Months Rolling Programme (Oct-22)



Date	Revision	Checked	Approved
18-Dec-19	00V1	WYu	
22-Feb-20	01V0	SPa/LLo	WYu
09-Apr-20	01V1	SPa/LLo	WYu
17-Jul-20	01V2	SPa/LLo	WYu
09-Oct-20	01V3	SPa/LLo	WYu
02-Jul-21	02V0	SPa/LLo	WYu

Activity Name	Dur	Start	Finish	2022												2023																										
				July				August				September				October				November				December				January				February										
				03	10	17	24	31	07	14	21	28	04	11	18	25	02	09	16	23	30	06	13	20	27	04	11	18	25	01	08	15	22	29	05	12	19	26				
Submain Power Supply Installation	12	10-Feb-23	23-Feb-23																																							
Conduit Installation	24	24-Feb-23	23-Mar-23																																							
Cable Pulling	24	24-Feb-23	23-Mar-23																																							



Page 24 of 24 Data Date: 29-Oct-22	<ul style="list-style-type: none"> ◆ Milestone Planned Bar Critical Activity ◆ Actual Milestone Actual Work 	ED/2018/04 Trunk Road T2 and Infrastructure Works for Developments at South Apron Three Months Rolling Programme (Oct-22)		<table border="1"> <thead> <tr> <th>Date</th> <th>Revision</th> <th>Checked</th> <th>Approved</th> </tr> </thead> <tbody> <tr> <td>18-Dec-19</td> <td>00V1</td> <td>WYu</td> <td></td> </tr> <tr> <td>22-Feb-20</td> <td>01V0</td> <td>SPa/LLo</td> <td>WYu</td> </tr> <tr> <td>09-Apr-20</td> <td>01V1</td> <td>SPa/LLo</td> <td>WYu</td> </tr> <tr> <td>17-Jul-20</td> <td>01V2</td> <td>SPa/LLo</td> <td>WYu</td> </tr> <tr> <td>09-Oct-20</td> <td>01V3</td> <td>SPa/LLo</td> <td>WYu</td> </tr> <tr> <td>02-Jul-21</td> <td>02V0</td> <td>SPa/LLo</td> <td>WYu</td> </tr> </tbody> </table>	Date	Revision	Checked	Approved	18-Dec-19	00V1	WYu		22-Feb-20	01V0	SPa/LLo	WYu	09-Apr-20	01V1	SPa/LLo	WYu	17-Jul-20	01V2	SPa/LLo	WYu	09-Oct-20	01V3	SPa/LLo	WYu	02-Jul-21	02V0	SPa/LLo	WYu
Date	Revision	Checked	Approved																													
18-Dec-19	00V1	WYu																														
22-Feb-20	01V0	SPa/LLo	WYu																													
09-Apr-20	01V1	SPa/LLo	WYu																													
17-Jul-20	01V2	SPa/LLo	WYu																													
09-Oct-20	01V3	SPa/LLo	WYu																													
02-Jul-21	02V0	SPa/LLo	WYu																													