

#	Activity Name	Dur	Start	Finish	2024																													
					January				February					March				April				May					June				July			
					14	21	28	04	11	18	25	03	10	17	24	31	07	14	21	28	05	12	19	26	02	09	16	23	30	07	14	21	28	
1	ED/2018/04 TRUNK ROAD T2	145	02-Jan-24	29-Jun-24																														
2	WEST VENTILATION BUILDING [WVB]	134	02-Jan-24	17-Jun-24																														
3	WVB Construction	122	16-Jan-24	17-Jun-24																														
4	GBP resubmission and approval	37	16-Jan-24*	01-Mar-24	GBP resubmission and approval																													
5	E&M	107	17-Jan-24	30-May-24																														
6	WVB - E&M works (G/F)	83	17-Jan-24*	30-Apr-24	WVB - E&M works (G/F)																													
7	WVB - E&M works (1/F)	84	16-Feb-24*	30-May-24	WVB - E&M works (1/F)																													
8	External Works / EVA	96	19-Feb-24	17-Jun-24																														
9	UU works and Backfilling	36	19-Feb-24	03-Apr-24	UU works and Backfilling																													
10	Access Road Construction	36	05-Apr-24	18-May-24	Access Road Construction																													
11	Fire Hydrants confirmation from FSD for FSI inspection	0		01-Jun-24	Fire Hydrants confirmation from FSD for FSI inspection																													
12	EVA Construction	24	20-May-24	17-Jun-24	EVA Construction																													
13	Essential Criteria for FSI	133	02-Jan-24	15-Jun-24																														
14	Power Engerization	90	05-Feb-24	30-May-24																														
15	CLP Final Inspection / CLP Tx Rm - Handover to CLP	0		05-Feb-24	CLP Final Inspection / CLP Tx Rm - Handover to CLP																													
16	CLP Mobilization	45	06-Feb-24	05-Apr-24	CLP Mobilization																													
17	CLP Installation	45	06-Apr-24	30-May-24	CLP Installation																													
18	CLP Tx Rm - Power On	0		30-May-24	CLP Tx Rm - Power On																													
19	Dangerous Goods Licenses	133	02-Jan-24	15-Jun-24																														
20	Emergency Generator Room - ABWF works	34	02-Jan-24*	09-Feb-24	Emergency Generator Room - ABWF works																													
21	WVB - Genset & Oil Tank delivery on site	0		01-Mar-24	WVB - Genset & Oil Tank delivery on site																													
22	WVB - Genset & Oil Tank Installation and T&C	48	02-Mar-24	02-May-24	WVB - Genset & Oil Tank Installation and T&C																													
23	Receipt of report of compliance	0		10-May-24	Receipt of report of compliance																													
24	Submission of Application	7	03-May-24	10-May-24	Submission of Application																													
25	DG Licenses Inspection (Vent) by FSD	0		20-May-24	DG Licenses Inspection (Vent) by FSD																													
26	DG Licenses Inspection (Layout) by FSD	0		07-Jun-24	DG Licenses Inspection (Layout) by FSD																													
27	Issuance of Certificate from FSD	0		15-Jun-24	Issuance of Certificate from FSD																													
28	Fireman Lift	87	06-Feb-24	27-May-24																														
29	Lift Installation (by OTIS)	51	06-Feb-24	12-Apr-24	Lift Installation (by OTIS)																													
30	T&C (by OTIS) & Issue WR1 / Submisison of LE5	24	13-Apr-24	11-May-24	T&C (by OTIS) & Issue WR1 / Submisison of LE5																													
31	EMSD Inspection	12	13-May-24	27-May-24	EMSD Inspection																													
32	Issuance of Permit by EMSD	0		27-May-24	Issuance of Permit by EMSD																													
33	Water Supply	121	15-Jan-24	15-Jun-24																														
34	FS Water (Inside WVB)	109	30-Jan-24	15-Jun-24																														
35	542 Approval from WSD	0		30-Jan-24*	542 Approval from WSD																													
36	Submission WW046 part 1	0		01-Feb-24	Submission WW046 part 1																													
37	Submission of WW046 Part IV for FS Water	0		30-Apr-24	Submission of WW046 Part IV for FS Water																													
38	Inspection for FS Water & Issuance of WW046 part V (a) by WSD	12	17-May-24	30-May-24	Inspection for FS Water & Issuance of WW046 part																													
39	Pipe Sterilization & Water Sampling	6	31-May-24	06-Jun-24	Pipe Sterilization & Water Sampling																													
40	Water Sample Testing	3	07-Jun-24	11-Jun-24	Water Sample Testing																													
41	Issuance of WW046 Part V(b) from WSD	0		11-Jun-24	Issuance of WW046 Part V(b) from WSD																													

Appendix A

- ◆ Milestone
- Planned Bar
- Critical Bar

**ED/2018/04 Trunk Road T2 and Infrastructure Works
for Developments at South Apron**

Three Months Rolling Programme (Feb-24)



Date	Revision	Checked	Approved
31-Jan-24	Rev. A	SPa	

#	Activity Name	Dur	Start	Finish	2024																														
					January	February	March	April	May	June	July	14	21	28	04	11	18	25	03	10	17	24	31	07	14	21	28	05	12	19	26	02	09	16	23
124	Eastbound	139	07-Jan-24	26-May-24																															
125	EB CH 8609-8738 - Parapet installation 129m	92	07-Jan-24	07-Apr-24	EB CH 8609-8738 - Parapet installation 129m																														
126	EB CH 8738-8832 - Parapet installation 94m	47	08-Apr-24	26-May-24	EB CH 8738-8832 - Parapet installation 94m																														
127	Westbound	127	04-Jan-24	15-Jun-24																															
128	NCPS	127	04-Jan-24	15-Jun-24																															
129	Parapet installation - R0301-R074 (44 parapets) up to CP8	19	04-Jan-24	25-Jan-24	Parapet installation - R0301-R074 (44 parapets) up to CP8																														
130	Parapet installation - R075-R0120 (46 parapets) up to CP9	19	18-Jan-24	08-Feb-24	Parapet installation - R075-R0120 (46 parapets) up to CP9																														
131	Parapet installation - R021-R0164 (44 parapets) up to CP10	19	01-Feb-24	26-Feb-24	Parapet installation - R021-R0164 (44 parapets) up to CP10																														
132	Parapet installation - R0165-R0209 (45 parapets) up to CP11	19	19-Feb-24	11-Mar-24	Parapet installation - R0165-R0209 (45 parapets) up to CP11																														
133	Parapet installation - R0210-R0255 (46 parapets) up to CP12	19	04-Mar-24	25-Mar-24	Parapet installation - R0210-R0255 (46 parapets) up to CP12																														
134	Parapet installation - R0711-R0756 (46 parapets) up to CP13	19	18-Mar-24	12-Apr-24	Parapet installation - R0711-R0756 (46 parapets) up to CP13																														
135	Parapet installation - R0026-R0300 (45 parapets) up to CP14	19	05-Apr-24	26-Apr-24	Parapet installation - R0026-R0300 (45 parapets) up to CP14																														
136	Parapet installation - R0301-R0346 (46 parapets) up to CP15	19	19-Apr-24	11-May-24	Parapet installation - R0301-R0346 (46 parapets) up to CP15																														
137	Parapet installation - R0347-R0392 (46 parapets) up to CP16	19	04-May-24	29-May-24	Parapet installation - R0347-R0392 (46 parapets) up to CP16																														
138	Parapet installation - R0393-R0437 (45 parapets) up to CP17	19	20-May-24	15-Jun-24	Parapet installation - R0393-R0437 (45 parapets) up to CP17																														
139	CKL Pilot Tunnel	96	15-Feb-24	13-Jun-24																															
140	Westbound	96	15-Feb-24	13-Jun-24																															
141	WB Pilot TBM bulkhead construction 1st bulkhead + water filling	48	15-Feb-24*	15-Apr-24	WB Pilot TBM bulkhead construction 1st bulkhead + water filling																														
142	WB Pilot TBM bulkhead construction 2nd bulkhead (alap)	48	16-Apr-24	13-Jun-24	WB Pilot TBM bulkhead construction 2nd bulkhead (alap)																														
143	CHA KWO LING TUNNEL	133	11-Jan-24	25-Jun-24																															
144	Eastbound	92	11-Jan-24	06-May-24																															
145	Type A2	40	27-Jan-24	16-Mar-24																															
146	EB D&Br Dismantling Cavern excv + overbreak	40	27-Jan-24	16-Mar-24	EB D&Br Dismantling Cavern excv + overbreak																														
147	Type A1	92	11-Jan-24	06-May-24																															
148	EB Type A1 Crown (10bays, 6d/bay)	60	11-Jan-24	23-Mar-24	EB Type A1 Crown (10bays, 6d/bay)																														
149	EB Type A1 to C1-C2 fwks adjustment 1st stage	16	25-Mar-24	16-Apr-24	EB Type A1 to C1-C2 fwks adjustment 1st stage																														
150	EB Type A1 to C1-C2 fwks adjustment 2nd stage	8	26-Apr-24	06-May-24	EB Type A1 to C1-C2 fwks adjustment 2nd stage																														
151	Type A	24	16-Feb-24	14-Mar-24																															
152	OHVD	24	16-Feb-24	14-Mar-24																															
153	EB Type A OHVD Slab fwk dismantling	24	16-Feb-24	14-Mar-24	EB Type A OHVD Slab fwk dismantling																														
154	Type C	8	17-Apr-24	25-Apr-24																															
155	EB Type C1 Crown (1 bay 8d/bay)	8	17-Apr-24	25-Apr-24	EB Type C1 Crown (1 bay 8d/bay)																														
156	Westbound	97	02-Feb-24	04-Jun-24																															
157	Type A2	95	02-Feb-24	01-Jun-24																															
158	WB Type A2 Crown (4 bays @ 4d/bay)	16	02-Feb-24	23-Feb-24	WB Type A2 Crown (4 bays @ 4d/bay)																														
159	WB Type A2 Crown Fwks dismantling	12	24-Feb-24	08-Mar-24	WB Type A2 Crown Fwks dismantling																														
160	WB 1st bulkhead	36	15-Feb-24*	27-Mar-24	WB 1st bulkhead																														
161	WB 1st bulkhead water filling	12	28-Mar-24*	15-Apr-24	WB 1st bulkhead water filling																														
162	WB 2nd bulkhead	36	16-Apr-24	01-Jun-24	WB 2nd bulkhead																														
163	Type A1	69	09-Mar-24	04-Jun-24																															
164	WB Type A1 OHVD Fwk assembly	24	09-Mar-24	10-Apr-24	WB Type A1 OHVD Fwk assembly																														

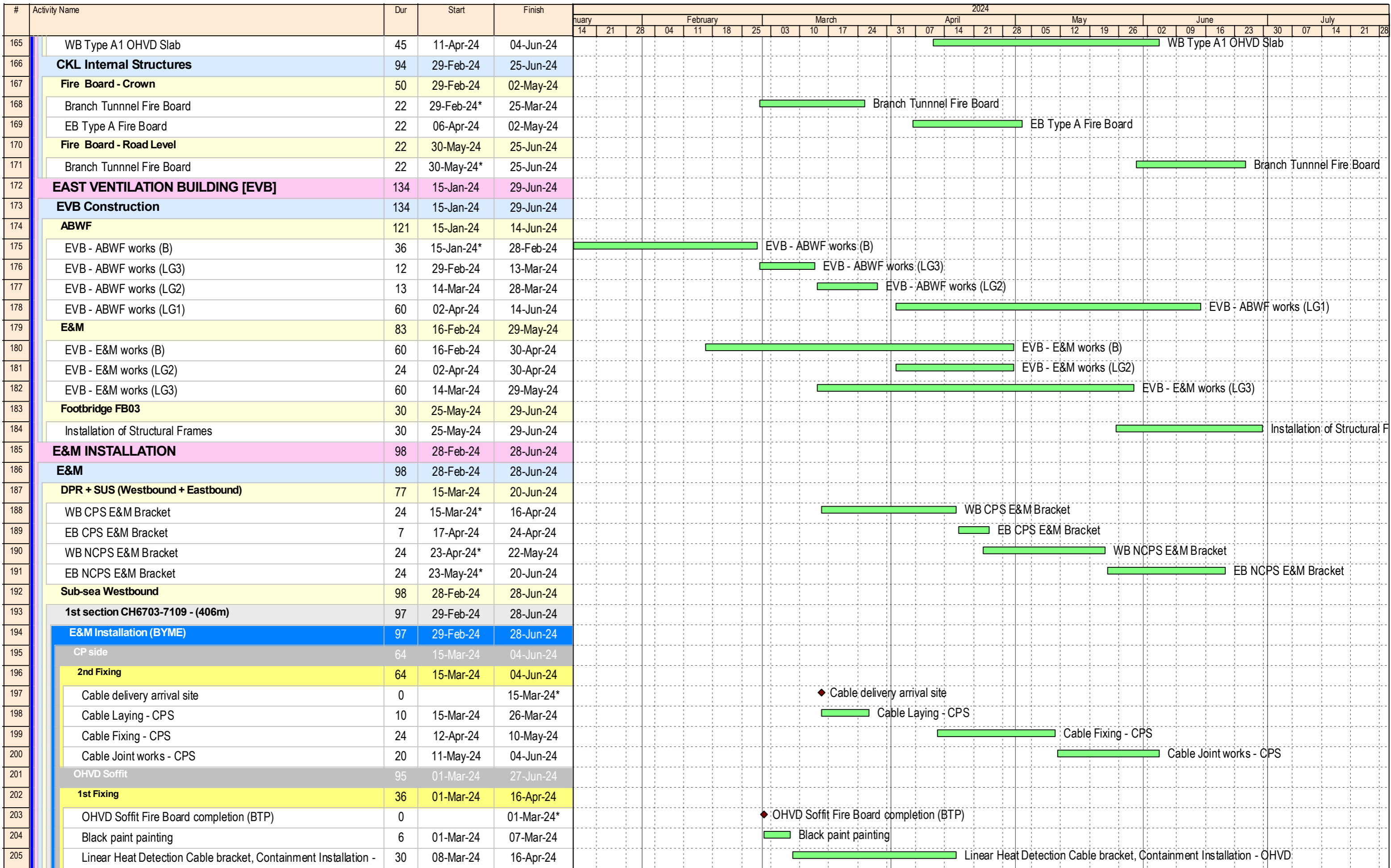
- ◆ Milestone
- ▬ Planned Bar
- ▬ Critical Bar

ED/2018/04 Trunk Road T2 and Infrastructure Works
for Developments at South Apron

Three Months Rolling Programme (Feb-24)



Date	Revision	Checked	Approved
31-Jan-24	Rev. A	SPa	



- ◆ Milestone
- ▬ Planned Bar
- ▬ Critical Bar

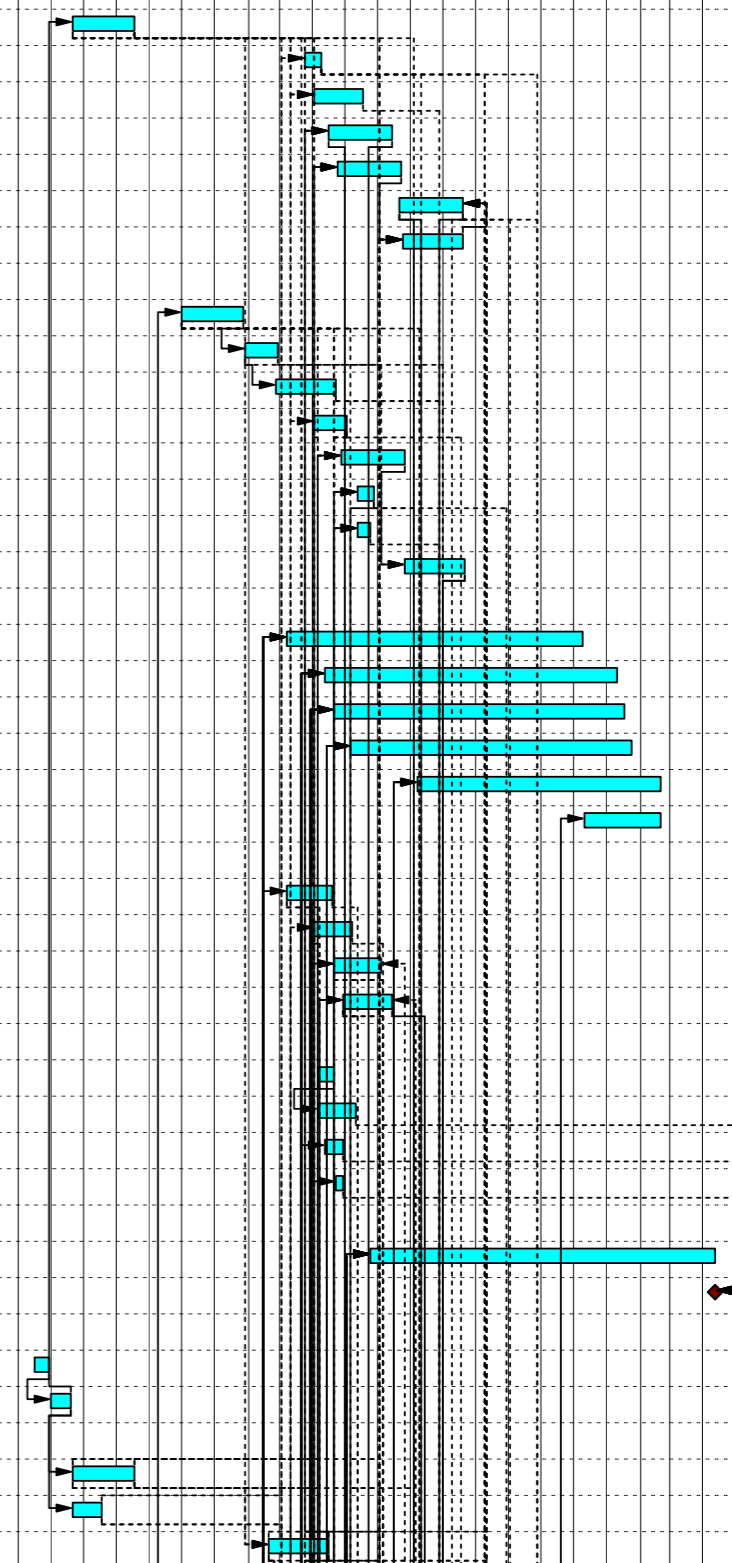
ED/2018/04 Trunk Road T2 and Infrastructure Works
for Developments at South Apron

Three Months Rolling Programme (Feb-24)



Date	Revision	Checked	Approved
31-Jan-24	Rev. A	SPa	

Activity ID	Activity Name	Original Duration	Early Start	Early Finish	Late Start	Late Finish	2023							2024							2025																					
							Jan	F	M	Apr	M	Jun	Jul	A	S	Oct	N	D	Jan	F	M	Apr	M	Jun	Jul	A	S	Oct	N	D	Jan	F	M	Apr	M	Jun	Jul	Aug	S	Oct	N	Dec
							13	14	15	16	17	18	19	20	21	22	23	24	25	26	27	28	29	30	31	32	33	34	35	36	37	38	39	40	41	42	43	44	45	46	47	48
Trunk Road T2 - Traffic Control & Surveillance System & Associated Works							665	17-Jul-23	29-Sep-25	23-May-24	31-Oct-26																															
Site Installation and Testing & Commissioning							665	17-Jul-23	29-Sep-25	23-May-24	31-Oct-26																															
Installation & Testing Related to Stage 2 of Works							493	21-Aug-23	11-Apr-25	28-Jun-24	31-Oct-26																															
Installation							451	21-Aug-23	20-Feb-25	28-Jun-24	31-Oct-26																															
Portion 4 - TKO-LTT (LT Interchange)							300	21-Aug-23	19-Aug-24	28-Jun-24	16-Jan-25																															
SW1930	Install Cable Containments	48	21-Aug-23	17-Oct-23	28-Jun-24	23-Aug-24																																				
SW1960	Install Equipment in Kiosk C	12	25-Mar-24	08-Apr-24	06-Nov-24	19-Nov-24																																				
SW1940	Install CCTV Camera	36	03-Apr-24	17-May-24	04-Dec-24	16-Jan-25																																				
SW1980	Laying of Leaky Cable	48	16-Apr-24	13-Jun-24	16-Oct-24	10-Dec-24																																				
SW1950	Laying of Signal Cable - the 1st Section	48	25-Apr-24	22-Jun-24	23-Sep-24	19-Nov-24																																				
SW1990	Laying of Signal Cable - the 3rd Section	50	21-Jun-24	19-Aug-24	18-Nov-24	16-Jan-25																																				
SW1970	Laying of Signal Cable - the 2nd Section	48	24-Jun-24	19-Aug-24	20-Nov-24	16-Jan-25																																				
Portion 1 - South Apron Up to SUS							217	01-Dec-23	21-Aug-24	03-Jul-24	17-Feb-25																															
SW2000	Install Cable Containments - the 1st Section	48	01-Dec-23	27-Jan-24	03-Jul-24	27-Aug-24																																				
SW2050	Install Cable Containments - the 2nd Section	24	29-Jan-24	28-Feb-24	07-Oct-24	04-Nov-24																																				
SW2060	Laying of Leaky Cable	48	27-Feb-24	23-Apr-24	02-Nov-24	28-Dec-24																																				
SW2010	Install CCTV Camera	24	03-Apr-24	02-May-24	21-Aug-24	17-Sep-24																																				
SW2020	Signal Cable Laying - the 1st Section	48	27-Apr-24	25-Jun-24	04-Sep-24	01-Nov-24																																				
SW2030	Install Equipment in Kiosk F	12	13-May-24	27-May-24	04-Feb-25	17-Feb-25																																				
SW2040	Install Radio Antenna	10	13-May-24	24-May-24	06-Jan-25	16-Jan-25																																				
SW2070	Signal Cable Laying - the 2nd Section	48	26-Jun-24	21-Aug-24	02-Nov-24	28-Dec-24																																				
Portion 2 - Tunnel Section, Service Gallery, WVB & EVB							287	08-Mar-24	20-Feb-25	09-Sep-24	31-Oct-26																															
SW2080	Install Cable Containments	229	08-Mar-24	09-Dec-24	09-Sep-24	31-Oct-26																																				
SW2090	Install CCTV Camera	224	13-Apr-24	09-Jan-25	17-Oct-24	31-Oct-26																																				
SW2100	Install ET	224	20-Apr-24	16-Jan-25	28-Dec-24	31-Oct-26																																				
SW2110	Install Radio System in Service Gallery	218	06-May-24	23-Jan-25	24-Oct-24	31-Oct-26																																				
SW2120	Signal Cable Laying	188	08-Jul-24	20-Feb-25	13-Nov-24	31-Oct-26																																				
SW2130	Laying of Leaky Cable	58	10-Dec-24	20-Feb-25	16-Dec-24	31-Oct-26																																				
Portion 3 - CKL Branch Tunnel in TKO-LTT Site							80	08-Mar-24	13-Jun-24	28-Jan-25	22-Apr-25																															
SW2230	Install Cable Containments	36	08-Mar-24	19-Apr-24	07-Feb-25	20-Mar-25																																				
SW2220	Install CCTV Camera	29	03-Apr-24	08-May-24	28-Jan-25	05-Mar-25																																				
SW2250	Signal Cable Laying	36	20-Apr-24	03-Jun-24	11-Mar-25	22-Apr-25																																				
SW2240	Laying of Leaky Cable	36	30-Apr-24	13-Jun-24	14-Feb-25	27-Mar-25																																				
Underpass S21							30	05-Apr-24	10-May-24	26-Apr-25	03-Jun-25																															
SW2260	Install Cable Containment	14	05-Apr-24	20-Apr-24	26-Apr-25	14-May-25																																				
SW2280	Laying of Leaky Cable	30	05-Apr-24	10-May-24	26-Apr-25	03-Jun-25																																				
SW2290	Laying of Power Cable From TCCS Cabinet in T2 Area	14	13-Apr-24	29-Apr-24	17-May-25	03-Jun-25																																				
SW2270	Install YAGI Antenna	7	22-Apr-24	29-Apr-24	26-May-25	03-Jun-25																																				
Testing							265	25-May-24	11-Apr-25	06-Jan-25	31-Oct-26																															
TC1590	Testing of FS-related TCCS Equipment	265	25-May-24	11-Apr-25	06-Jan-25	31-Oct-26																																				
TC1610	Issue Notice of Stage 2 Completion to the Engineer	0		11-Apr-25		19-Jun-25																																				
Portion 4 - TKO-LTT (LT Interchange)							443	17-Jul-23	03-Jan-25	23-May-24	19-Jun-25																															
SW1020	Inspect Civil Provisions & Submit Inspection Report	12	17-Jul-23	29-Jul-23	23-May-24	05-Jun-24																																				
SW1030	Rectify Civil Provision Defects by Others	18	31-Jul-23	19-Aug-23	06-Jun-24	27-Jun-24																																				
Installation Works							300	21-Aug-23	19-Aug-24	28-Jun-24	16-Jan-25																															
SW1040	Install Cable Containments	48	21-Aug-23	17-Oct-23	28-Jun-24	23-Aug-24																																				
SW1050	Install Equipment Racks	24	21-Aug-23	16-Sep-23	07-Sep-24	07-Oct-24																																				
SW1110	Install Traffic Control Devices	48	19-Feb-24	15-Apr-24	17-Aug-24	15-Oct-24																																				



Date	Revision	Checked	Approved
18-Apr-23	Rev. D	FC	
10-May-23	Rev. E	FC	
07-Jul-23	Rev. F	MY	

Activity ID	Activity Name	Original Duration	Early Start	Early Finish	Late Start	Late Finish	2023												2024												2025																												
							Jan	F	M	Apr	M	Jun	Jul	A	S	Oct	N	D	Jan	F	M	Apr	M	Jun	Jul	A	S	Oct	N	D	Jan	F	M	Apr	M	Jun	Jul	A	S	Oct	N	D																	
							13	14	15	16	17	18	19	20	21	22	23	24	25	26	27	28	29	30	31	32	33	34	35	36	37	38	39	40	41	42	43	44	45	46	47	48																	
Installation Works							54	07-Jun-24	10-Aug-24	25-Oct-24	17-Jan-25																																																
SW2510	Install Cable Containment	24	07-Jun-24	06-Jul-24	25-Oct-24	21-Nov-24																																																					
SW2520	Install VLSL	18	22-Jun-24	13-Jul-24	28-Nov-24	18-Dec-24																																																					
SW2530	Install PA in Service Gallery	24	22-Jun-24	20-Jul-24	15-Nov-24	12-Dec-24																																																					
SW2540	Install Traffic Control Devices	24	29-Jun-24	27-Jul-24	29-Nov-24	27-Dec-24																																																					
SW2550	Install CCTV Camera	18	08-Jul-24	27-Jul-24	12-Dec-24	03-Jan-25																																																					
SW2560	Install PABX in Service Gallery	24	08-Jul-24	03-Aug-24	29-Nov-24	27-Dec-24																																																					
SW2570	Install Radio System in Service Gallery	24	15-Jul-24	10-Aug-24	06-Dec-24	04-Jan-25																																																					
SW2580	Install Detection Camera	18	22-Jul-24	10-Aug-24	27-Dec-24	17-Jan-25																																																					
SW2590	Install ET	12	29-Jul-24	10-Aug-24	28-Dec-24	11-Jan-25																																																					
Tunnel Section - CH 8+100 to CH 8+750							78	13-Aug-24	14-Nov-24	04-Oct-24	28-Apr-25																																																
SW2920	Inspect Civil Provisions & Submit Inspection Report	3	13-Aug-24	15-Aug-24	04-Oct-24	07-Oct-24																																																					
SW2930	Rectify Civil Provision Defects by Others	6	16-Aug-24	22-Aug-24	08-Oct-24	15-Oct-24																																																					
Installation Works							69	23-Aug-24	14-Nov-24	16-Oct-24	28-Apr-25																																																
SW2600	Install Cable Containment	24	23-Aug-24	20-Sep-24	16-Oct-24	12-Nov-24																																																					
SW2610	Install VLSL	18	06-Sep-24	27-Sep-24	28-Nov-24	18-Dec-24																																																					
SW2620	Install PA in Service Gallery	24	06-Sep-24	05-Oct-24	15-Nov-24	12-Dec-24																																																					
SW2630	Install Traffic Control Devices	24	13-Sep-24	14-Oct-24	29-Nov-24	27-Dec-24																																																					
SW2640	Install CCTV Camera	18	21-Sep-24	14-Oct-24	12-Dec-24	03-Jan-25																																																					
SW2650	Install PABX in Service Gallery	24	21-Sep-24	21-Oct-24	29-Nov-24	27-Dec-24																																																					
SW2700	Install GOFS (CH 7+600 to CH 8+750)	45	21-Sep-24	14-Nov-24	06-Mar-25	28-Apr-25																																																					
SW2710	Signal Cable Laying and Termination (CH 7+600 to CH 8+750)	45	21-Sep-24	14-Nov-24	13-Nov-24	06-Jan-25																																																					
SW2660	Install Radio System in Service Gallery	24	28-Sep-24	28-Oct-24	06-Dec-24	04-Jan-25																																																					
SW2670	Install Detection Camera	18	07-Oct-24	28-Oct-24	27-Dec-24	17-Jan-25																																																					
SW2680	Install ET	12	15-Oct-24	28-Oct-24	28-Dec-24	11-Jan-25																																																					
SW2690	Install SEC Camera	18	22-Oct-24	11-Nov-24	03-Mar-25	22-Mar-25																																																					
Tunnel Section - CH 8+750 to CH 9+250							86	07-Nov-24	20-Feb-25	07-Nov-24	07-May-25																																																
SW2940	Inspect Civil Provisions & Submit Inspection Report	1	07-Nov-24	07-Nov-24	07-Nov-24	07-Nov-24																																																					
SW2950	Rectify Civil Provision Defects by Others	4	08-Nov-24	12-Nov-24	08-Nov-24	12-Nov-24																																																					
Installation Works							81	13-Nov-24	20-Feb-25	13-Nov-24	07-May-25																																																
SW2720	Install Cable Containment	23	13-Nov-24	09-Dec-24	13-Nov-24	09-Dec-24																																																					
SW2730	Install VLSL	13	10-Dec-24	24-Dec-24	02-Jan-25	16-Jan-25																																																					
SW2740	Install PA in Service Gallery	19	10-Dec-24	02-Jan-25	04-Jan-25	25-Jan-25																																																					
SW2750	Install Traffic Control Devices	19	10-Dec-24	02-Jan-25	11-Jan-25	05-Feb-25																																																					
SW2780	Install GOFS (CH 7+600 to CH 8+750)	58	10-Dec-24	20-Feb-25	19-Feb-25	28-Apr-25																																																					
SW2790	Signal Cable Laying and Termination (CH 7+600 to CH 8+750)	58	10-Dec-24	20-Feb-25	10-Dec-24	20-Feb-25																																																					
SW2850	Laying of Leaky Cable	58	10-Dec-24	20-Feb-25	16-Dec-24	26-Feb-25																																																					
SW2760	Install CCTV Camera	18	18-Dec-24	09-Jan-25	10-Jan-25	03-Feb-25																																																					
SW2770	Install PABX in Service Gallery	22	20-Dec-24	16-Jan-25	15-Jan-25	12-Feb-25																																																					
SW2800	Install Radio System in Service Gallery	22	28-Dec-24	23-Jan-25	22-Jan-25	19-Feb-25																																																					
SW2810	Install Detection Camera	18	03-Jan-25	23-Jan-25	12-Feb-25	04-Mar-25																																																					
SW2820	Install ET	12	03-Jan-25	16-Jan-25	06-Feb-25	19-Feb-25																																																					
SW2830	Install SEC Camera	18	10-Jan-25	03-Feb-25	15-Apr-25	07-May-25																																																					
SW2840	Install PVMS	12	17-Jan-25	03-Feb-25	22-Apr-25	07-May-25																																																					
West Ventilation Building							279	04-Sep-23	08-Aug-24	07-Sep-24	26-Feb-25																																																
SW1360	Inspect Civil Provisions & Submit Inspection Report	12	04-Sep-23	16-Sep-23	07-Sep-24	21-Sep-24																																																					
SW1370	Rectify Civil Provision Defects by Others	18	18-Sep-23	10-Oct-23	23-Sep-24	15-Oct-24																																																					
Installation Works							249	11-Oct-23	08-Aug-24	16-Oct-24	26-Feb-25																																																
SW1650	Install Cable Containments	24	11-Oct-23	08-Nov-23	16-Oct-24	12-Nov-24																																																					
SW1660	Position Equipment Rack	12	09-Nov-23	22-Nov-23	23-Nov-24	06-Dec-24																																																					
SW1690	Install PABX Equipment	20	10-Nov-23	02-Dec-23	06-Nov-24	28-Nov-24																																																					
SW1670	Install Network Equipment	36	25-Mar-24	07-May-24	07-Dec-24	20-Jan-25																																																					
SW1710	Install Radio Equipment	12	13-Apr-24	26-Apr-24	29-Nov-24	12-Dec-24																																																					



■ Planned Activities ◆ Milestone
■ Actual Work
■ Critical Activity

Date	Revision	Checked	Approved
18-Apr-23	Rev. D	FC	
10-May-23	Rev. E	FC	
07-Jul-23	Rev. F	MY	

