

| Activity Name | Dur | Start | Finish | 2022 | | | | | | | | | | | | 2023 | | | | | | | | | | | | | | | | | | | | | | | | | | | |
|---|------|-------------|-------------|---|----|----|----|----------|----|----|----|---------|----|----|----|----------|----|----|----|-------|----|----|----|-------|----|----|----|-----|----|----|----|------|----|----|----|----|----|----|--|--|--|--|--|
| | | | | November | | | | December | | | | January | | | | February | | | | March | | | | April | | | | May | | | | June | | | | | | | | | | | |
| | | | | 30 | 06 | 13 | 20 | 27 | 04 | 11 | 18 | 25 | 01 | 08 | 15 | 22 | 29 | 05 | 12 | 19 | 26 | 05 | 12 | 19 | 26 | 02 | 09 | 16 | 23 | 30 | 07 | 14 | 21 | 28 | 04 | 11 | 18 | 25 | | | | | |
| ED/2018/04 - Trunk Road T2 Feb-23 | 1114 | 30-Dec-20 A | 01-Apr-25 | | | | | | | | | | | | | | | | | | | | | | | | | | | | | | | | | | | | | | | | |
| COMMENCEMENT & SITE POSSESSION DATE | 153 | 03-Oct-22 A | 31-Mar-23 | | | | | | | | | | | | | | | | | | | | | | | | | | | | | | | | | | | | | | | | |
| SITE POSSESSION DATE | 153 | 03-Oct-22 A | 31-Mar-23 | | | | | | | | | | | | | | | | | | | | | | | | | | | | | | | | | | | | | | | | |
| SOUTH APRON WEST AREA | 153 | 03-Oct-22 A | 31-Mar-23 | | | | | | | | | | | | | | | | | | | | | | | | | | | | | | | | | | | | | | | | |
| Portion H2 Possession 01 January 2022 or as directed by SO | 0 | | 03-Oct-22 A | January 2022 or as directed by SO | | | | | | | | | | | | | | | | | | | | | | | | | | | | | | | | | | | | | | | |
| Portion K Possession 31 March 2023 or as directed by SO | 0 | | 31-Mar-23* | ◆ Portion K Possession 31 March 2023 or as directed by SO | | | | | | | | | | | | | | | | | | | | | | | | | | | | | | | | | | | | | | | |
| CHA KWO LING AREA | 0 | 28-Feb-23 | 28-Feb-23 | | | | | | | | | | | | | | | | | | | | | | | | | | | | | | | | | | | | | | | | |
| Portion S Possession 30 November 2021 or as directed by SO | 0 | | 28-Feb-23* | ◆ Portion S Possession 30 November 2021 or as directed by SO | | | | | | | | | | | | | | | | | | | | | | | | | | | | | | | | | | | | | | | |
| Portion T2 & T3 Possession 31 March 2020 or as directed by SO | 0 | | 28-Feb-23 | ◆ Portion T2 & T3 Possession 31 March 2020 or as directed by SO | | | | | | | | | | | | | | | | | | | | | | | | | | | | | | | | | | | | | | | |
| Portion U Possession 30 November 2021 or as directed by SO | 0 | | 28-Feb-23* | ◆ Portion U Possession 30 November 2021 or as directed by SO | | | | | | | | | | | | | | | | | | | | | | | | | | | | | | | | | | | | | | | |
| Portion V Possession 30 November 2021 or as directed by SO | 0 | | 28-Feb-23* | ◆ Portion V Possession 30 November 2021 or as directed by SO | | | | | | | | | | | | | | | | | | | | | | | | | | | | | | | | | | | | | | | |
| Portion AB Possession 01 June 2022 or as directed by SO | 0 | | 28-Feb-23* | ◆ Portion AB Possession 01 June 2022 or as directed by SO | | | | | | | | | | | | | | | | | | | | | | | | | | | | | | | | | | | | | | | |
| CONTRACT KEY DATE & SITE HANDOVER DATE | 126 | 13-Aug-22 A | 09-Jun-23 | | | | | | | | | | | | | | | | | | | | | | | | | | | | | | | | | | | | | | | | |
| SITE HANDOVER DATE | 73 | 27-Jan-23 A | 31-Mar-23 | | | | | | | | | | | | | | | | | | | | | | | | | | | | | | | | | | | | | | | | |
| SOUTH APRON WEST AREA | 73 | 27-Jan-23 A | 31-Mar-23 | | | | | | | | | | | | | | | | | | | | | | | | | | | | | | | | | | | | | | | | |
| Portion A1 Handover 01 June 2022 or as directed by SO | 0 | | 27-Jan-23 A | ◆ Portion A1 Handover 01 June 2022 or as directed by SO | | | | | | | | | | | | | | | | | | | | | | | | | | | | | | | | | | | | | | | |
| Portion C2 Handover DOC + 796 Cd or as directed by SO | 0 | | 28-Feb-23* | ◆ Portion C2 Handover DOC + 796 Cd or as directed by SO | | | | | | | | | | | | | | | | | | | | | | | | | | | | | | | | | | | | | | | |
| Portion D1 Handover DOC + 796 Cd or as directed by SO | 0 | | 28-Feb-23* | ◆ Portion D1 Handover DOC + 796 Cd or as directed by SO | | | | | | | | | | | | | | | | | | | | | | | | | | | | | | | | | | | | | | | |
| Portion D3 Handover DOC + 796 Cd or as directed by SO | 0 | | 28-Feb-23* | ◆ Portion D3 Handover DOC + 796 Cd or as directed by SO | | | | | | | | | | | | | | | | | | | | | | | | | | | | | | | | | | | | | | | |
| Portion F3 Handover DOC + 1099 Cd or as directed by SO | 0 | | 28-Feb-23* | ◆ Portion F3 Handover DOC + 1099 Cd or as directed by SO | | | | | | | | | | | | | | | | | | | | | | | | | | | | | | | | | | | | | | | |
| Portion F4 Handover 01 June 2022 or as directed by SO | 0 | | 28-Feb-23* | ◆ Portion F4 Handover 01 June 2022 or as directed by SO | | | | | | | | | | | | | | | | | | | | | | | | | | | | | | | | | | | | | | | |
| Portion H2 Handover DOC + 1099 Cd or as directed by SO | 0 | | 28-Feb-23* | ◆ Portion H2 Handover DOC + 1099 Cd or as directed by SO | | | | | | | | | | | | | | | | | | | | | | | | | | | | | | | | | | | | | | | |
| Portion I Handover 30 November 2022 or as directed by SO | 0 | | 28-Feb-23 | ◆ Portion I Handover 30 November 2022 or as directed by SO | | | | | | | | | | | | | | | | | | | | | | | | | | | | | | | | | | | | | | | |
| Portion J1 Handover 03 June 2022 or as directed by SO | 0 | | 28-Feb-23* | ◆ Portion J1 Handover 03 June 2022 or as directed by SO | | | | | | | | | | | | | | | | | | | | | | | | | | | | | | | | | | | | | | | |
| Portion J2 Handover 03 June 2022 or as directed by SO | 0 | | 28-Feb-23* | ◆ Portion J2 Handover 03 June 2022 or as directed by SO | | | | | | | | | | | | | | | | | | | | | | | | | | | | | | | | | | | | | | | |
| Portion H1 Handover (subject to coordination) | 0 | | 28-Feb-23 | ◆ Portion H1 Handover (subject to coordination) | | | | | | | | | | | | | | | | | | | | | | | | | | | | | | | | | | | | | | | |
| Portion C1 Handover 31 March 2023 or as directed by SO | 0 | | 31-Mar-23* | ◆ Portion C1 Handover 31 March 2023 or as directed by SO | | | | | | | | | | | | | | | | | | | | | | | | | | | | | | | | | | | | | | | |
| Portion C3 Handover 31 March 2023 or as directed by SO | 0 | | 31-Mar-23* | ◆ Portion C3 Handover 31 March 2023 or as directed by SO | | | | | | | | | | | | | | | | | | | | | | | | | | | | | | | | | | | | | | | |
| Portion C4 Handover 31 March 2023 or as directed by SO | 0 | | 31-Mar-23* | ◆ Portion C4 Handover 31 March 2023 or as directed by SO | | | | | | | | | | | | | | | | | | | | | | | | | | | | | | | | | | | | | | | |
| SOUTH APRON EAST AREA | 0 | 28-Feb-23 | 28-Feb-23 | | | | | | | | | | | | | | | | | | | | | | | | | | | | | | | | | | | | | | | | |
| Portion W Handover DOC + 704 Cd or as directed by SO | 0 | | 28-Feb-23* | ◆ Portion W Handover DOC + 704 Cd or as directed by SO | | | | | | | | | | | | | | | | | | | | | | | | | | | | | | | | | | | | | | | |
| KEY DATE - TRUNK ROAD T2 | 81 | 28-Feb-23 | 09-Jun-23 | | | | | | | | | | | | | | | | | | | | | | | | | | | | | | | | | | | | | | | | |
| CONTRACT COMPLETION DATES | 38 | 28-Feb-23 | 18-Apr-23 | | | | | | | | | | | | | | | | | | | | | | | | | | | | | | | | | | | | | | | | |
| KD-2 Stage 1B - Depressed Road & South Apron Adit for J1/J2 H/O [DOC+1072cd] | 0 | | 28-Feb-23* | ◆ KD-2 Stage 1B - Depressed Road & South Apron Adit for J1/J2 H/O [DOC+1072cd] | | | | | | | | | | | | | | | | | | | | | | | | | | | | | | | | | | | | | | | |
| KD-4 Stage 2B - AGR, DPR, SAS, C&C & LS for TBM Access [DOC+707cd] | 0 | | 28-Feb-23* | ◆ KD-4 Stage 2B - AGR, DPR, SAS, C&C & LS for TBM Access [DOC+707cd] | | | | | | | | | | | | | | | | | | | | | | | | | | | | | | | | | | | | | | | |
| KD-6 Stage 3B1 - Civil provision between AGR to SUS Tunnel for TCSS | 0 | | 28-Feb-23* | ◆ KD-6 Stage 3B1 - Civil provision between AGR to SUS Tunnel for TCSS | | | | | | | | | | | | | | | | | | | | | | | | | | | | | | | | | | | | | | | |
| KD-5 Stage 3A - Design Approval for Stage 3B [DOC+1212cd] | 0 | | 09-Mar-23* | ◆ KD-5 Stage 3A - Design Approval for Stage 3B [DOC+1212cd] | | | | | | | | | | | | | | | | | | | | | | | | | | | | | | | | | | | | | | | |
| KD-7 Stage 4A - Design Approval for Stage 4B [DOC+1212cd] | 0 | | 09-Mar-23* | ◆ KD-7 Stage 4A - Design Approval for Stage 4B [DOC+1212cd] | | | | | | | | | | | | | | | | | | | | | | | | | | | | | | | | | | | | | | | |
| KD-9 Stage 5 - South Apron Adit between WVB & DPR for I H/O [DOC+1252cd] | 0 | | 18-Apr-23* | ◆ KD-9 Stage 5 - South Apron Adit between WVB & DPR for I H/O [DOC+1252cd] | | | | | | | | | | | | | | | | | | | | | | | | | | | | | | | | | | | | | | | |
| PLANNED COMPLETION DATES | 102 | 28-Feb-23 | 09-Jun-23 | | | | | | | | | | | | | | | | | | | | | | | | | | | | | | | | | | | | | | | | |
| KD-1 Stage 1A - Design Approval for Stage 1B [DOC+464cd] | 0 | | 28-Feb-23* | ◆ KD-1 Stage 1A - Design Approval for Stage 1B [DOC+464cd] | | | | | | | | | | | | | | | | | | | | | | | | | | | | | | | | | | | | | | | |
| KD-3 Stage 2A - Design Approval for Stage 2B [DOC+405cd] | 0 | | 28-Feb-23* | ◆ KD-3 Stage 2A - Design Approval for Stage 2B [DOC+405cd] | | | | | | | | | | | | | | | | | | | | | | | | | | | | | | | | | | | | | | | |
| KD-4 Stage 2B - AGR, DPR, SAS, C&C & LS for TBM Access [DOC+707cd] | 0 | | 28-Feb-23 | ◆ KD-4 Stage 2B - AGR, DPR, SAS, C&C & LS for TBM Access [DOC+707cd] | | | | | | | | | | | | | | | | | | | | | | | | | | | | | | | | | | | | | | | |
| KD-9 Stage 5 - South Apron Adit between WVB & DPR for I H/O [DOC+1252cd] | 0 | | 09-Jun-23 | ◆ KD-9 Stage 5 - South Apron Adit between WVB & DPR for I H/O [DOC+1252cd] | | | | | | | | | | | | | | | | | | | | | | | | | | | | | | | | | | | | | | | |
| KEY DATE - STAGE 5 INFRASTRUCTURE WORKS & JUNCTION IMPROVEMENT | 56 | 13-Aug-22 A | 28-Feb-23 | | | | | | | | | | | | | | | | | | | | | | | | | | | | | | | | | | | | | | | | |
| CONTRACT COMPLETION DATES | 56 | 13-Aug-22 A | 28-Feb-23 | | | | | | | | | | | | | | | | | | | | | | | | | | | | | | | | | | | | | | | | |
| LANDSCAPE SOFTWARES | 0 | 28-Feb-23 | 28-Feb-23 | | | | | | | | | | | | | | | | | | | | | | | | | | | | | | | | | | | | | | | | |
| KD-23 Section 9A - Road S20 & KFR Landscape Softworks [DOC+796cd] | 0 | | 28-Feb-23* | ◆ KD-23 Section 9A - Road S20 & KFR Landscape Softworks [DOC+796cd] | | | | | | | | | | | | | | | | | | | | | | | | | | | | | | | | | | | | | | | |
| KD-28 Section 9F [STE] - HBR/CYS/WCR Landscape Softworks [DOC+704cd] | 0 | | 28-Feb-23* | ◆ KD-28 Section 9F [STE] - HBR/CYS/WCR Landscape Softworks [DOC+704cd] | | | | | | | | | | | | | | | | | | | | | | | | | | | | | | | | | | | | | | | |
| ROAD & DRAIN RELATED WORKS | 56 | 13-Aug-22 A | 28-Feb-23 | | | | | | | | | | | | | | | | | | | | | | | | | | | | | | | | | | | | | | | | |
| KD-14 Section 6A - Road S20, Drainage, Outfall 1 & CUE for AMAWBC [DOC+796cd] | 0 | | 13-Aug-22 A | ◆ KD-14 Section 6A - Road S20, Drainage, Outfall 1 & CUE for AMAWBC [DOC+796cd] | | | | | | | | | | | | | | | | | | | | | | | | | | | | | | | | | | | | | | | |
| KD-22 Section 8D [STE] - HBR/CYS/WCR Junction Modification [DOC+704cd] | 0 | | 28-Aug-22 A | ◆ KD-22 Section 8D [STE] - HBR/CYS/WCR Junction Modification [DOC+704cd] | | | | | | | | | | | | | | | | | | | | | | | | | | | | | | | | | | | | | | | |

- ◆ Milestone
- Planned Bar
- Critical Activity
- ◆ Actual Milestone
- Actual Work

ED/2018/04 Trunk Road T2 and Infrastructure Works for Developments at South Apron

Three Months Rolling Programme (Feb-23)



| Date | Revision | Checked | Approved |
|-----------|----------|---------|----------|
| 18-Dec-19 | 00V1 | WYu | |
| 22-Feb-20 | 01V0 | SPa/LLo | WYu |
| 09-Apr-20 | 01V1 | SPa/LLo | WYu |
| 17-Jul-20 | 01V2 | SPa/LLo | WYu |
| 09-Oct-20 | 01V3 | SPa/LLo | WYu |
| 02-Jul-21 | 02V0 | SPa/LLo | WYu |

| Activity Name | Dur | Start | Finish | 2022 | | | | | | | | | | | | 2023 | | | | | | | | | | | | | | | | | | | |
|---|------------|--------------------|--------------------|--|----|----|----|----------|----|----|----|---------|----|----|----|---|----|----|----|-------|----|----|----|-------|----|----|----|-----|----|----|----|------|----|----|----|
| | | | | November | | | | December | | | | January | | | | February | | | | March | | | | April | | | | May | | | | June | | | |
| | | | | 30 | 06 | 13 | 20 | 27 | 04 | 11 | 18 | 25 | 01 | 08 | 15 | 22 | 29 | 05 | 12 | 19 | 26 | 05 | 12 | 19 | 26 | 02 | 09 | 16 | 23 | 30 | 07 | 14 | 21 | 28 | 04 |
| DDA - Further information required by SO | 32 | 16-Jul-22 A | 22-Feb-23 A | [Planned Bar] | | | | | | | | | | | | DDA - Further information required by SO | | | | | | | | | | | | | | | | | | | |
| DDA - 4th Sub | 0 | | 22-Feb-23 A | | | | | | | | | | | | | ◆ DDA - 4th Sub | | | | | | | | | | | | | | | | | | | |
| DDA - 4th Review by SO | 35 | 23-Feb-23 A | 03-Apr-23 | | | | | | | | | | | | | [Planned Bar] DDA - 4th Review by SO | | | | | | | | | | | | | | | | | | | |
| DDA - SO Consent for Construction | 0 | | 03-Apr-23 | | | | | | | | | | | | | ◆ DDA - SO Consent for Construction | | | | | | | | | | | | | | | | | | | |
| DDA - E&M Electrical Installation | 252 | 26-May-22 A | 29-Dec-22 A | [Planned Bar] | | | | | | | | | | | | | | | | | | | | | | | | | | | | | | | |
| DDA - 3rd Review by SO | 35 | 26-May-22 A | 21-Jun-22 A | [Planned Bar] | | | | | | | | | | | | | | | | | | | | | | | | | | | | | | | |
| DDA - Further information required by SO | 33 | 22-Jun-22 A | 10-Oct-22 A | [Planned Bar] mation required by SO | | | | | | | | | | | | | | | | | | | | | | | | | | | | | | | |
| DDA - 4th Sub | 0 | | 10-Oct-22 A | | | | | | | | | | | | | | | | | | | | | | | | | | | | | | | | |
| DDA - 4th Review by SO | 35 | 11-Oct-22 A | 23-Nov-22 A | [Planned Bar] DDA - 4th Review by SO | | | | | | | | | | | | | | | | | | | | | | | | | | | | | | | |
| DDA - Further information required by SO | 33 | 24-Nov-22 A | 09-Dec-22 A | [Planned Bar] DDA - Further information required by SO | | | | | | | | | | | | | | | | | | | | | | | | | | | | | | | |
| DDA - 5th Sub | 0 | | 09-Dec-22 A | | | | | | | | | | | | | ◆ DDA - 5th Sub | | | | | | | | | | | | | | | | | | | |
| DDA - 5th Review by SO | 35 | 10-Dec-22 A | 29-Dec-22 A | [Planned Bar] DDA - 5th Review by SO | | | | | | | | | | | | | | | | | | | | | | | | | | | | | | | |
| DDA - SO Consent for Construction | 0 | | 29-Dec-22 A | | | | | | | | | | | | | ◆ DDA - SO Consent for Construction | | | | | | | | | | | | | | | | | | | |
| DDA - E&M Tunnel Lighting Design | 234 | 12-May-22 A | 10-Jan-23 A | [Planned Bar] | | | | | | | | | | | | | | | | | | | | | | | | | | | | | | | |
| DDA - 2nd Review by SO | 35 | 12-May-22 A | 09-Jun-22 A | [Planned Bar] | | | | | | | | | | | | | | | | | | | | | | | | | | | | | | | |
| DDA - Further information required by SO | 24 | 10-Jun-22 A | 10-Oct-22 A | [Planned Bar] mation required by SO | | | | | | | | | | | | | | | | | | | | | | | | | | | | | | | |
| DDA - 3rd Sub | 0 | | 10-Oct-22 A | | | | | | | | | | | | | | | | | | | | | | | | | | | | | | | | |
| DDA - 3rd Review by SO | 35 | 11-Oct-22 A | 13-Oct-22 A | [Planned Bar] w by SO | | | | | | | | | | | | | | | | | | | | | | | | | | | | | | | |
| DDA - Further information required by SO | 24 | 14-Oct-22 A | 08-Dec-22 A | [Planned Bar] DDA - Further information required by SO | | | | | | | | | | | | | | | | | | | | | | | | | | | | | | | |
| DDA - 4th Sub | 0 | | 08-Dec-22 A | | | | | | | | | | | | | ◆ DDA - 4th Sub | | | | | | | | | | | | | | | | | | | |
| DDA - 4th Review by SO | 35 | 09-Dec-22 A | 10-Jan-23 A | [Planned Bar] DDA - 4th Review by SO | | | | | | | | | | | | | | | | | | | | | | | | | | | | | | | |
| DDA - SO Consent for Construction | 0 | | 10-Jan-23 A | | | | | | | | | | | | | ◆ DDA - SO Consent for Construction | | | | | | | | | | | | | | | | | | | |
| DDA - E&M CMCS | 340 | 04-Dec-21 A | 28-Feb-23 | [Planned Bar] | | | | | | | | | | | | | | | | | | | | | | | | | | | | | | | |
| DDA - Review by IP / DC | 36 | 04-Dec-21 A | 31-May-22 A | [Planned Bar] | | | | | | | | | | | | | | | | | | | | | | | | | | | | | | | |
| DDA - Further information required by SO | 24 | 23-Dec-21 A | 06-Jun-22 A | [Planned Bar] | | | | | | | | | | | | | | | | | | | | | | | | | | | | | | | |
| DDA - 2nd Sub | 0 | | 06-Jun-22 A | | | | | | | | | | | | | | | | | | | | | | | | | | | | | | | | |
| DDA - 4th Sub | 0 | | 06-Jun-22 A | | | | | | | | | | | | | | | | | | | | | | | | | | | | | | | | |
| DDA - 2nd Review by SO | 35 | 07-Jun-22 A | 08-Jul-22 A | [Planned Bar] | | | | | | | | | | | | | | | | | | | | | | | | | | | | | | | |
| DDA - 4th Review by SO | 35 | 07-Jun-22 A | 08-Jul-22 A | [Planned Bar] | | | | | | | | | | | | | | | | | | | | | | | | | | | | | | | |
| DDA - Further information required by SO | 24 | 09-Jul-22 A | 02-Dec-22 A | [Planned Bar] DDA - Further information required by SO | | | | | | | | | | | | | | | | | | | | | | | | | | | | | | | |
| DDA - 3rd Sub | 0 | | 02-Dec-22 A | | | | | | | | | | | | | ◆ DDA - 3rd Sub | | | | | | | | | | | | | | | | | | | |
| DDA - 3rd Review by SO | 35 | 02-Dec-22 A | 27-Jan-23 A | [Planned Bar] DDA - 3rd Review by SO | | | | | | | | | | | | | | | | | | | | | | | | | | | | | | | |
| DDA - SO Consent for Construction | 0 | | 28-Feb-23 | | | | | | | | | | | | | ◆ DDA - SO Consent for Construction | | | | | | | | | | | | | | | | | | | |
| AIP - Civil Provision for TCSS | 139 | 17-Oct-22 A | 03-Apr-23 | [Planned Bar] | | | | | | | | | | | | | | | | | | | | | | | | | | | | | | | |
| AIP - Draft - Preparation by Designer | 22 | 17-Oct-22 A | 10-Nov-22 A | [Planned Bar] AIP - Draft - Preparation by Designer | | | | | | | | | | | | | | | | | | | | | | | | | | | | | | | |
| AIP - Draft - Final Review and prepare for 1st Sub | 12 | 11-Nov-22 A | 24-Nov-22 A | [Planned Bar] AIP - Draft - Final Review and prepare for 1st Sub | | | | | | | | | | | | | | | | | | | | | | | | | | | | | | | |
| AIP - 1st Sub | 0 | | 25-Nov-22 A | | | | | | | | | | | | | ◆ AIP - 1st Sub | | | | | | | | | | | | | | | | | | | |
| AIP - Review by SO | 28 | 26-Nov-22 A | 06-Feb-23 A | [Planned Bar] AIP - Review by SO | | | | | | | | | | | | | | | | | | | | | | | | | | | | | | | |
| AIP - Review by IP / DC | 28 | 26-Nov-22 A | 06-Feb-23 A | [Planned Bar] AIP - Review by IP / DC | | | | | | | | | | | | | | | | | | | | | | | | | | | | | | | |
| AIP - 2nd Sub | 0 | | 06-Feb-23 A | | | | | | | | | | | | | ◆ AIP - 2nd Sub | | | | | | | | | | | | | | | | | | | |
| AIP - Update & prepare for 2nd Sub | 6 | 07-Feb-23 A | 06-Mar-23 | [Planned Bar] AIP - Update & prepare for 2nd Sub | | | | | | | | | | | | | | | | | | | | | | | | | | | | | | | |
| AIP - 2nd Review by SO | 28 | 07-Mar-23 | 03-Apr-23 | [Planned Bar] AIP - 2nd Review by SO | | | | | | | | | | | | | | | | | | | | | | | | | | | | | | | |
| AIP - SO Consent for DDA Submission | 0 | | 03-Apr-23 | | | | | | | | | | | | | ◆ AIP - SO Consent for DDA Submission | | | | | | | | | | | | | | | | | | | |
| DDA - Civil Provision for TCSS | 78 | 04-Apr-23 | 13-Jul-23 | [Planned Bar] | | | | | | | | | | | | | | | | | | | | | | | | | | | | | | | |
| DDA - Draft - Preparation by Designer | 33 | 04-Apr-23* | 17-May-23 | [Planned Bar] | | | | | | | | | | | | [Planned Bar] DDA - Draft - Preparation by Designer | | | | | | | | | | | | | | | | | | | |
| DDA - Draft - Final Review and prepare for 1st Sub | 24 | 18-May-23 | 15-Jun-23 | [Planned Bar] | | | | | | | | | | | | [Planned Bar] DDA - Draft | | | | | | | | | | | | | | | | | | | |
| DDA - 1st Sub | 0 | | 15-Jun-23 | | | | | | | | | | | | | ◆ DDA - 1st S | | | | | | | | | | | | | | | | | | | |
| DDA - Review by SO | 28 | 16-Jun-23 | 13-Jul-23 | [Planned Bar] | | | | | | | | | | | | [Planned Bar] | | | | | | | | | | | | | | | | | | | |
| DDA - Review by IP / DC | 28 | 16-Jun-23 | 13-Jul-23 | [Planned Bar] | | | | | | | | | | | | [Planned Bar] | | | | | | | | | | | | | | | | | | | |
| PAYMENT MILESTONE | 595 | 13-Jun-22 A | 28-Jun-23 | [Planned Bar] | | | | | | | | | | | | | | | | | | | | | | | | | | | | | | | |
| 1.1 Preliminaries and General Requirements | 202 | 13-Jun-22 A | 13-May-23 | [Planned Bar] | | | | | | | | | | | | | | | | | | | | | | | | | | | | | | | |
| 1.1.42 Monthly Remaining value of this Cost Centre 1 Month 31 | 0 | | 13-Jun-22 A | | | | | | | | | | | | | | | | | | | | | | | | | | | | | | | | |
| 1.1.42 Monthly Remaining value of this Cost Centre 1 Month 32 | 0 | | 13-Jul-22 A | | | | | | | | | | | | | | | | | | | | | | | | | | | | | | | | |

- ◆ Milestone
- [Cyan Bar] Planned Bar
- [Red Bar] Critical Activity
- ◆ Actual Milestone
- [Blue Bar] Actual Work

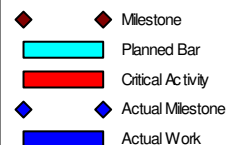
ED/2018/04 Trunk Road T2 and Infrastructure Works for Developments at South Apron

Three Months Rolling Programme (Feb-23)



| Date | Revision | Checked | Approved |
|-----------|----------|---------|----------|
| 18-Dec-19 | 00V1 | WYu | |
| 22-Feb-20 | 01V0 | SPa/LLo | WYu |
| 09-Apr-20 | 01V1 | SPa/LLo | WYu |
| 17-Jul-20 | 01V2 | SPa/LLo | WYu |
| 09-Oct-20 | 01V3 | SPa/LLo | WYu |
| 02-Jul-21 | 02V0 | SPa/LLo | WYu |

| Activity Name | Dur | Start | Finish | 2022 | | | | | | | | | | | | 2023 | | | | | | | | | | | | | | | | | | | |
|---|-----|-------------|-------------|---|----|----|----|----------|----|----|----|---------|----|----|----|----------|----|----|----|-------|----|----|----|-------|----|----|----|-----|----|----|----|------|----|----|--|
| | | | | November | | | | December | | | | January | | | | February | | | | March | | | | April | | | | May | | | | June | | | |
| | | | | 30 | 06 | 13 | 20 | 27 | 04 | 11 | 18 | 25 | 01 | 08 | 15 | 22 | 29 | 05 | 12 | 19 | 26 | 02 | 09 | 16 | 23 | 30 | 07 | 14 | 21 | 28 | 04 | 11 | 18 | 25 | |
| 6.2 .4 Complete excavation & installation of TBM Tunnel lining by length 0.2 | 0 | | 13-Sep-22 A | TBM Tunnel lining by length 0.2 | | | | | | | | | | | | | | | | | | | | | | | | | | | | | | | |
| 6.2 .5 Complete excavation & installation of TBM Tunnel lining by length 0.25 | 0 | | 13-Sep-22 A | TBM Tunnel lining by length 0.25 | | | | | | | | | | | | | | | | | | | | | | | | | | | | | | | |
| 6.2 .22 Complete TBM Tunnel waterproofing 0.2 | 0 | | 13-Sep-22 A | 0.2 | | | | | | | | | | | | | | | | | | | | | | | | | | | | | | | |
| 6.2 .6 Complete excavation & installation of TBM Tunnel lining by length 0.3 | 0 | | 13-Oct-22 A | excavation & installation of TBM Tunnel lining by length 0.3 | | | | | | | | | | | | | | | | | | | | | | | | | | | | | | | |
| 6.2 .7 Complete excavation & installation of TBM Tunnel lining by length 0.35 | 0 | | 13-Oct-22 A | excavation & installation of TBM Tunnel lining by length 0.35 | | | | | | | | | | | | | | | | | | | | | | | | | | | | | | | |
| 6.2 .23 Complete TBM Tunnel waterproofing 0.3 | 0 | | 13-Oct-22 A | TBM Tunnel waterproofing 0.3 | | | | | | | | | | | | | | | | | | | | | | | | | | | | | | | |
| 6.2 .8 Complete excavation & installation of TBM Tunnel lining by length 0.4 | 0 | | 18-Nov-22 A | ◆ 6.2 .8 Complete excavation & installation of TBM Tunnel lining by length 0.4 | | | | | | | | | | | | | | | | | | | | | | | | | | | | | | | |
| 6.2 .24 Complete TBM Tunnel waterproofing 0.4 | 0 | | 18-Nov-22 A | ◆ 6.2 .24 Complete TBM Tunnel waterproofing 0.4 | | | | | | | | | | | | | | | | | | | | | | | | | | | | | | | |
| 6.2 .9 Complete excavation & installation of TBM Tunnel lining by length 0.45 | 0 | | 13-Dec-22 A | ◆ 6.2 .9 Complete excavation & installation of TBM Tunnel lining by length 0.45 | | | | | | | | | | | | | | | | | | | | | | | | | | | | | | | |
| 6.2 .10 Complete excavation & installation of TBM Tunnel lining by length 0.5 | 0 | | 13-Dec-22 A | ◆ 6.2 .10 Complete excavation & installation of TBM Tunnel lining by length 0.5 | | | | | | | | | | | | | | | | | | | | | | | | | | | | | | | |
| 6.2 .25 Complete TBM Tunnel waterproofing 0.5 | 0 | | 13-Dec-22 A | ◆ 6.2 .25 Complete TBM Tunnel waterproofing 0.5 | | | | | | | | | | | | | | | | | | | | | | | | | | | | | | | |
| 6.2 .11 Complete excavation & installation of TBM Tunnel lining by length 0.55 | 0 | | 13-Jan-23 A | ◆ 6.2 .11 Complete excavation & installation of TBM Tunnel lining by length 0.55 | | | | | | | | | | | | | | | | | | | | | | | | | | | | | | | |
| 6.2 .12 Complete excavation & installation of TBM Tunnel lining by length 0.6 | 0 | | 13-Jan-23 A | ◆ 6.2 .12 Complete excavation & installation of TBM Tunnel lining by length 0.6 | | | | | | | | | | | | | | | | | | | | | | | | | | | | | | | |
| 6.2 .26 Complete TBM Tunnel waterproofing 0.6 | 0 | | 13-Jan-23 A | ◆ 6.2 .26 Complete TBM Tunnel waterproofing 0.6 | | | | | | | | | | | | | | | | | | | | | | | | | | | | | | | |
| 6.2 .31 Complete TBM Tunnel overhead ventilation duct slab 0.1 | 0 | | 28-Feb-23 | ◆ 6.2 .31 Complete TBM Tunnel overhead ventilation duct slab 0.1 | | | | | | | | | | | | | | | | | | | | | | | | | | | | | | | |
| 6.2 .32 Complete TBM Tunnel overhead ventilation duct slab 0.2 | 0 | | 28-Feb-23 | ◆ 6.2 .32 Complete TBM Tunnel overhead ventilation duct slab 0.2 | | | | | | | | | | | | | | | | | | | | | | | | | | | | | | | |
| 6.2 .41 Complete TBM Tunnel Thermal Barrier to tunnel lining 0.1 | 0 | | 28-Feb-23 | ◆ 6.2 .41 Complete TBM Tunnel Thermal Barrier to tunnel lining 0.1 | | | | | | | | | | | | | | | | | | | | | | | | | | | | | | | |
| 6.2 .13 Complete excavation & installation of TBM Tunnel lining by length 0.65 | 0 | | 16-Mar-23 | ◆ 6.2 .13 Complete excavation & installation of TBM Tunnel lining by length 0.65 | | | | | | | | | | | | | | | | | | | | | | | | | | | | | | | |
| 6.2 .42 Complete TBM Tunnel Thermal Barrier to tunnel lining 0.2 | 0 | | 21-Mar-23 | ◆ 6.2 .42 Complete TBM Tunnel Thermal Barrier to tunnel lining 0.2 | | | | | | | | | | | | | | | | | | | | | | | | | | | | | | | |
| 6.2 .14 Complete excavation & installation of TBM Tunnel lining by length 0.7 | 0 | | 27-Mar-23 | ◆ 6.2 .14 Complete excavation & installation of TBM Tunnel lining by length 0.7 | | | | | | | | | | | | | | | | | | | | | | | | | | | | | | | |
| 6.2 .27 Complete TBM Tunnel waterproofing 0.7 | 0 | | 27-Mar-23 | ◆ 6.2 .27 Complete TBM Tunnel waterproofing 0.7 | | | | | | | | | | | | | | | | | | | | | | | | | | | | | | | |
| 6.2 .33 Complete TBM Tunnel overhead ventilation duct slab 0.3 | 0 | | 28-Mar-23 | ◆ 6.2 .33 Complete TBM Tunnel overhead ventilation duct slab 0.3 | | | | | | | | | | | | | | | | | | | | | | | | | | | | | | | |
| 6.2 .15 Complete excavation & installation of TBM Tunnel lining by length 0.75 | 0 | | 18-Apr-23 | ◆ 6.2 .15 Complete excavation & installation of TBM Tunnel lining by length 0.75 | | | | | | | | | | | | | | | | | | | | | | | | | | | | | | | |
| 6.2 .43 Complete TBM Tunnel Thermal Barrier to tunnel lining 0.3 | 0 | | 04-May-23 | ◆ 6.2 .43 Complete TBM Tunnel Thermal Barrier to tunnel lining 0.3 | | | | | | | | | | | | | | | | | | | | | | | | | | | | | | | |
| 6.2 .34 Complete TBM Tunnel overhead ventilation duct slab 0.4 | 0 | | 12-May-23 | ◆ 6.2 .34 Complete TBM Tunnel overhead ventilation duct slab 0.4 | | | | | | | | | | | | | | | | | | | | | | | | | | | | | | | |
| 6.2 .16 Complete excavation & installation of TBM Tunnel lining by length 0.8 | 0 | | 16-May-23 | ◆ 6.2 .16 Complete excavation & installation of TBM Tunnel lining by length 0.8 | | | | | | | | | | | | | | | | | | | | | | | | | | | | | | | |
| 6.2 .28 Complete TBM Tunnel waterproofing 0.8 | 0 | | 16-May-23 | ◆ 6.2 .28 Complete TBM Tunnel waterproofing 0.8 | | | | | | | | | | | | | | | | | | | | | | | | | | | | | | | |
| 6.2 .17 Complete excavation & installation of TBM Tunnel lining by length 0.85 | 0 | | 10-Jun-23 | ◆ 6.2 .17 Complete excavation & installation of TBM Tunnel lining by length 0.85 | | | | | | | | | | | | | | | | | | | | | | | | | | | | | | | |
| 6.3 Cross Passages for TBM Tunnel | 101 | 13-Jan-23 A | 22-May-23 | | | | | | | | | | | | | | | | | | | | | | | | | | | | | | | | |
| 6.3 .4 Complete Ground treatment for all Cross Passages 0.1 | 0 | | 13-Jan-23 A | ◆ 6.3 .4 Complete Ground treatment for all Cross Passages 0.1 | | | | | | | | | | | | | | | | | | | | | | | | | | | | | | | |
| 6.3 .5 Complete Ground treatment for all Cross Passages 0.2 | 0 | | 13-Jan-23 A | ◆ 6.3 .5 Complete Ground treatment for all Cross Passages 0.2 | | | | | | | | | | | | | | | | | | | | | | | | | | | | | | | |
| 6.3 .6 Complete Ground treatment for all Cross Passages 0.3 | 0 | | 13-Feb-23 A | ◆ 6.3 .6 Complete Ground treatment for all Cross Passages 0.3 | | | | | | | | | | | | | | | | | | | | | | | | | | | | | | | |
| 6.3 .14 Complete excavation and support of Cross Passages 0.1 | 0 | | 13-Feb-23 A | ◆ 6.3 .14 Complete excavation and support of Cross Passages 0.1 | | | | | | | | | | | | | | | | | | | | | | | | | | | | | | | |
| 6.3 .7 Complete Ground treatment for all Cross Passages 0.4 | 0 | | 28-Feb-23 | ◆ 6.3 .7 Complete Ground treatment for all Cross Passages 0.4 | | | | | | | | | | | | | | | | | | | | | | | | | | | | | | | |
| 6.3 .15 Complete excavation and support of Cross Passages 0.2 | 0 | | 28-Feb-23 | ◆ 6.3 .15 Complete excavation and support of Cross Passages 0.2 | | | | | | | | | | | | | | | | | | | | | | | | | | | | | | | |
| 6.3 .16 Complete excavation and support of Cross Passages 0.3 | 0 | | 28-Feb-23 | ◆ 6.3 .16 Complete excavation and support of Cross Passages 0.3 | | | | | | | | | | | | | | | | | | | | | | | | | | | | | | | |
| 6.3 .17 Complete excavation and support of Cross Passages 0.4 | 0 | | 09-Mar-23 | ◆ 6.3 .17 Complete excavation and support of Cross Passages 0.4 | | | | | | | | | | | | | | | | | | | | | | | | | | | | | | | |
| 6.3 .8 Complete Ground treatment for all Cross Passages 0.5 | 0 | | 14-Mar-23 | ◆ 6.3 .8 Complete Ground treatment for all Cross Passages 0.5 | | | | | | | | | | | | | | | | | | | | | | | | | | | | | | | |
| 6.3 .18 Complete excavation and support of Cross Passages 0.5 | 0 | | 17-Apr-23 | ◆ 6.3 .18 Complete excavation and support of Cross Passages 0.5 | | | | | | | | | | | | | | | | | | | | | | | | | | | | | | | |
| 6.3 .9 Complete Ground treatment for all Cross Passages 0.6 | 0 | | 27-Apr-23 | ◆ 6.3 .9 Complete Ground treatment for all Cross Passages 0.6 | | | | | | | | | | | | | | | | | | | | | | | | | | | | | | | |
| 6.3 .24 Complete structural works of Cross Passages 0.1 | 0 | | 28-Apr-23 | ◆ 6.3 .24 Complete structural works of Cross Passages 0.1 | | | | | | | | | | | | | | | | | | | | | | | | | | | | | | | |
| 6.3 .25 Complete structural works of Cross Passages 0.2 | 0 | | 13-May-23 | ◆ 6.3 .25 Complete structural works of Cross Passages 0.2 | | | | | | | | | | | | | | | | | | | | | | | | | | | | | | | |
| 6.3 .19 Complete excavation and support of Cross Passages 0.6 | 0 | | 22-May-23 | ◆ 6.3 .19 Complete excavation and support of Cross Passages 0.6 | | | | | | | | | | | | | | | | | | | | | | | | | | | | | | | |
| 7.1 Western Ventilation Building | 249 | 13-Jun-22 A | 13-Jan-23 A | | | | | | | | | | | | | | | | | | | | | | | | | | | | | | | | |
| 7.1 .5 Complete pile foundation for WVB 0.5 | 0 | | 13-Jun-22 A | | | | | | | | | | | | | | | | | | | | | | | | | | | | | | | | |
| 7.1 .6 Complete pile foundation for WVB 1 | 0 | | 18-Jun-22 A | | | | | | | | | | | | | | | | | | | | | | | | | | | | | | | | |
| 7.1 .7 Complete concrete works of gross plan area for WVB 0.25 | 0 | | 13-Sep-22 A | area for WVB 0.25 | | | | | | | | | | | | | | | | | | | | | | | | | | | | | | | |
| 7.1 .8 Complete concrete works of gross plan area for WVB 0.5 | 0 | | 13-Jan-23 A | ◆ 7.1 .8 Complete concrete works of gross plan area for WVB 0.5 | | | | | | | | | | | | | | | | | | | | | | | | | | | | | | | |
| 8.1 Eastern Ventilation Building | 189 | 13-Sep-22 A | 24-May-23 | | | | | | | | | | | | | | | | | | | | | | | | | | | | | | | | |
| 8.1 .3 Complete excavation for EVB 1 | 0 | | 13-Sep-22 A | | | | | | | | | | | | | | | | | | | | | | | | | | | | | | | | |
| 8.1 .4 Complete concrete works of gross plan area for EVB 0.25 | 0 | | 24-May-23 | ◆ 8.1 .4 Complete concrete works of gross plan area for EVB 0.25 | | | | | | | | | | | | | | | | | | | | | | | | | | | | | | | |
| 9.1 Launching Shaft | 0 | 28-Feb-23 | 28-Feb-23 | | | | | | | | | | | | | | | | | | | | | | | | | | | | | | | | |
| 9.1 .18 Complete permanent wall & bottom slab for Launching Shaft by length 0.2 | 0 | | 28-Feb-23 | ◆ 9.1 .18 Complete permanent wall & bottom slab for Launching Shaft by length 0.2 | | | | | | | | | | | | | | | | | | | | | | | | | | | | | | | |



ED/2018/04 Trunk Road T2 and Infrastructure Works for Developments at South Apron

Three Months Rolling Programme (Feb-23)



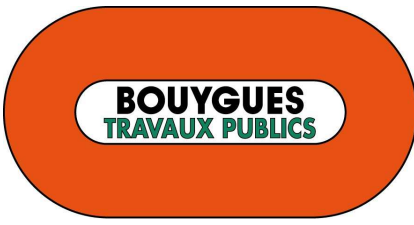
| Date | Revision | Checked | Approved |
|-----------|----------|---------|----------|
| 18-Dec-19 | 00V1 | WYu | |
| 22-Feb-20 | 01V0 | SPa/LLo | WYu |
| 09-Apr-20 | 01V1 | SPa/LLo | WYu |
| 17-Jul-20 | 01V2 | SPa/LLo | WYu |
| 09-Oct-20 | 01V3 | SPa/LLo | WYu |
| 02-Jul-21 | 02V0 | SPa/LLo | WYu |

| Activity Name | Dur | Start | Finish | 2022 | | | | | | | | | | | | 2023 | | | | | | | | | | | | | | | | | | | |
|--|-----|-------------|-------------|----------|----|----|----|----------|----|----|----|--|----|----|----|----------|----|----|----|--|--|----|----|-------|----|----|----|-----|----|----|----|------|----|----|--|
| | | | | November | | | | December | | | | January | | | | February | | | | March | | | | April | | | | May | | | | June | | | |
| | | | | 30 | 06 | 13 | 20 | 27 | 04 | 11 | 18 | 25 | 01 | 08 | 15 | 22 | 29 | 05 | 12 | 19 | 26 | 02 | 09 | 16 | 23 | 30 | 07 | 14 | 21 | 28 | 04 | 11 | 18 | 25 | |
| 34.2.2 Complete excavation of CUE | 0 | | 13-Jan-23 A | | | | | | | | | ◆ 34.2.2 Complete excavation of CUE | | | | | | | | | | | | | | | | | | | | | | | |
| 34.2.6 Complete concrete works of base slab of CUE 1 | 0 | | 13-Jan-23 A | | | | | | | | | ◆ 34.2.6 Complete concrete works of base slab of CUE 1 | | | | | | | | | | | | | | | | | | | | | | | |
| 34.2.5 Complete concrete works of base slab of CUE 0.75 | 0 | | 13-Jan-23 A | | | | | | | | | ◆ 34.2.5 Complete concrete works of base slab of CUE 0.75 | | | | | | | | | | | | | | | | | | | | | | | |
| 34.2.9 Complete concrete works of walls of CUE 0.75 | 0 | | 13-Feb-23 A | | | | | | | | | | | | | | | | | ◆ 34.2.9 Complete concrete works of walls of CUE 0.75 | | | | | | | | | | | | | | | |
| 34.2.10 Complete concrete works of walls of CUE 1 | 0 | | 13-Feb-23 A | | | | | | | | | | | | | | | | | ◆ 34.2.10 Complete concrete works of walls of CUE 1 | | | | | | | | | | | | | | | |
| 34.2.13 Complete concrete works of top slab of CUE 0.75 | 0 | | 13-Feb-23 A | | | | | | | | | | | | | | | | | ◆ 34.2.13 Complete concrete works of top slab of CUE 0.75 | | | | | | | | | | | | | | | |
| 34.2.14 Complete concrete works of top slab of CUE 1 | 0 | | 13-Feb-23 A | | | | | | | | | | | | | | | | | ◆ 34.2.14 Complete concrete works of top slab of CUE 1 | | | | | | | | | | | | | | | |
| 34.2.15 Complete drainage installation of CUE | 0 | | 10-Mar-23 | | | | | | | | | | | | | | | | | ◆ 34.2.15 Complete drainage installation of CUE | | | | | | | | | | | | | | | |
| 34.2.17 Complete power supply and lighting installation of CUE | 0 | | 10-Mar-23 | | | | | | | | | | | | | | | | | ◆ 34.2.17 Complete power supply and lighting installation of CUE | | | | | | | | | | | | | | | |
| 34.2.18 Complete backfill to ground level of CUE | 0 | | 24-Apr-23 | | | | | | | | | | | | | | | | | | ◆ 34.2.18 Complete backfill to ground level of CUE | | | | | | | | | | | | | | |
| 35 Services Gallery | 229 | 13-Jun-22 A | 23-Jun-23 | | | | | | | | | | | | | | | | | | | | | | | | | | | | | | | | |
| 35.33 Complete 75% of total volume (measured on plan) of excavation for Lower Basement | 0 | | 13-Jun-22 A | | | | | | | | | | | | | | | | | | | | | | | | | | | | | | | | |
| 35.18 Complete 60% of total length (measured on plan) of SG structures in Drill-and-Break | 0 | | 13-Sep-22 A | | | | | | | | | ◆ 35.18 Complete 60% of total length (measured on plan) of SG structures in Drill-and-Break and Drill-and-Blast Tunnel | | | | | | | | | | | | | | | | | | | | | | | |
| 35.21 Complete 10% of total length (measured on plan) of Services Gallery structures and ancillaries in TBM Tunnel | 0 | | 13-Sep-22 A | | | | | | | | | ◆ 35.21 Complete 10% of total length (measured on plan) of Services Gallery structures and ancillaries in TBM Tunnel | | | | | | | | | | | | | | | | | | | | | | | |
| 35.34 Complete 100% of total volume (measured on plan) of excavation for Lower Basement | 0 | | 13-Sep-22 A | | | | | | | | | ◆ 35.34 Complete 100% of total volume (measured on plan) of excavation for Lower Basement of East Ventilation Building | | | | | | | | | | | | | | | | | | | | | | | |
| 35.35 Complete concreting works of 25% of the total gross plan area for the Lower Basement | 0 | | 13-Oct-22 A | | | | | | | | | ◆ 35.35 Complete concreting works of 25% of the total gross plan area for the Lower Basement of East Ventilation Building | | | | | | | | | | | | | | | | | | | | | | | |
| 35.22 Complete 20% of total length (measured on plan) of Services Gallery structures and ancillaries in TBM Tunnel | 0 | | 18-Nov-22 A | | | | | | | | | ◆ 35.22 Complete 20% of total length (measured on plan) of Services Gallery structures and ancillaries in TBM Tunnel | | | | | | | | | | | | | | | | | | | | | | | |
| 35.23 Complete 30% of total length (measured on plan) of Services Gallery structures and ancillaries in TBM Tunnel | 0 | | 13-Dec-22 A | | | | | | | | | ◆ 35.23 Complete 30% of total length (measured on plan) of Services Gallery structures and ancillaries in TBM Tunnel | | | | | | | | | | | | | | | | | | | | | | | |
| 35.36 Complete concreting works of 50% of the total gross plan area for the Lower Basement | 0 | | 13-Dec-22 A | | | | | | | | | ◆ 35.36 Complete concreting works of 50% of the total gross plan area for the Lower Basement of East Ventilation Building | | | | | | | | | | | | | | | | | | | | | | | |
| 35.24 Complete 40% of total length (measured on plan) of Services Gallery structures and ancillaries in TBM Tunnel | 0 | | 13-Jan-23 A | | | | | | | | | ◆ 35.24 Complete 40% of total length (measured on plan) of Services Gallery structures and ancillaries in TBM Tunnel | | | | | | | | | | | | | | | | | | | | | | | |
| 35.14 Complete 80% of total length (measured on plan) of SG excavation in Drill-and-Break | 0 | | 13-Feb-23 A | | | | | | | | | ◆ 35.14 Complete 80% of total length (measured on plan) of SG excavation in Drill-and-Break and Drill-and-Blast Tunnel | | | | | | | | | | | | | | | | | | | | | | | |
| 35.25 Complete 50% of total length (measured on plan) of Services Gallery structures and ancillaries in TBM Tunnel | 0 | | 25-Mar-23 | | | | | | | | | ◆ 35.25 Complete 50% of total length (measured on plan) of Services Gallery structures and ancillaries in TBM Tunnel | | | | | | | | | | | | | | | | | | | | | | | |
| 35.15 Complete 100% of total length (measured on plan) of SG excavation in Drill-and-Break | 0 | | 31-Mar-23 | | | | | | | | | ◆ 35.15 Complete 100% of total length (measured on plan) of SG excavation in Drill-and-Break and Drill-and-Blast Tunnel | | | | | | | | | | | | | | | | | | | | | | | |
| 35.26 Complete 60% of total length (measured on plan) of Services Gallery structures and ancillaries in TBM Tunnel | 0 | | 28-Apr-23 | | | | | | | | | ◆ 35.26 Complete 60% of total length (measured on plan) of Services Gallery structures and ancillaries in TBM Tunnel | | | | | | | | | | | | | | | | | | | | | | | |
| 35.38 Complete concreting works of 100% of the total gross plan area for the Lower Basement | 0 | | 24-May-23 | | | | | | | | | ◆ 35.38 Complete concreting works of 100% of the total gross plan area for the Lower Basement of East Ventilation Building | | | | | | | | | | | | | | | | | | | | | | | |
| 35.37 Complete concreting works of 75% of the total gross plan area for the Lower Basement | 0 | | 23-Jun-23 | | | | | | | | | ◆ 35.37 Complete concreting works of 75% of the total gross plan area for the Lower Basement of East Ventilation Building | | | | | | | | | | | | | | | | | | | | | | | |
| SOUTH APRON EXTERNAL WORKS | 945 | 05-Feb-22 A | 07-Mar-25 | | | | | | | | | | | | | | | | | | | | | | | | | | | | | | | | |
| Road S20 | 756 | 18-Mar-22 A | 22-Jul-24 | | | | | | | | | | | | | | | | | | | | | | | | | | | | | | | | |
| CUE (Section 6A) | 97 | 11-Apr-22 A | 17-Aug-22 A | | | | | | | | | | | | | | | | | | | | | | | | | | | | | | | | |
| CKR Crossing | 40 | 30-May-22 A | 05-Jul-22 A | | | | | | | | | | | | | | | | | | | | | | | | | | | | | | | | |
| BS/E&M | 40 | 30-May-22 A | 05-Jul-22 A | | | | | | | | | | | | | | | | | | | | | | | | | | | | | | | | |
| CUE L10(N) Watermain (100m, 30m/wk) | 40 | 30-May-22 A | 05-Jul-22 A | | | | | | | | | | | | | | | | | | | | | | | | | | | | | | | | |
| Entrance | 72 | 11-Apr-22 A | 17-Aug-22 A | | | | | | | | | | | | | | | | | | | | | | | | | | | | | | | | |
| BS/E&M | 72 | 11-Apr-22 A | 17-Aug-22 A | | | | | | | | | | | | | | | | | | | | | | | | | | | | | | | | |
| Entrance - E&M Installation | 72 | 11-Apr-22 A | 17-Aug-22 A | | | | | | | | | | | | | | | | | | | | | | | | | | | | | | | | |
| Junction | 45 | 24-May-22 A | 23-Jul-22 A | | | | | | | | | | | | | | | | | | | | | | | | | | | | | | | | |
| BS/E&M | 45 | 24-May-22 A | 23-Jul-22 A | | | | | | | | | | | | | | | | | | | | | | | | | | | | | | | | |
| Junction - E&M 1st Fix Installation | 18 | 24-May-22 A | 14-Jun-22 A | | | | | | | | | | | | | | | | | | | | | | | | | | | | | | | | |
| Junction - E&M Installation | 24 | 15-Jun-22 A | 12-Jul-22 A | | | | | | | | | | | | | | | | | | | | | | | | | | | | | | | | |
| Junction - Backfill | 12 | 12-Jul-22 A | 23-Jul-22 A | | | | | | | | | | | | | | | | | | | | | | | | | | | | | | | | |
| S20 (Section 6A) | 756 | 18-Mar-22 A | 22-Jul-24 | | | | | | | | | | | | | | | | | | | | | | | | | | | | | | | | |
| Future Carriageway - Stage 3 | 84 | 24-May-22 A | 27-Aug-22 A | | | | | | | | | | | | | | | | | | | | | | | | | | | | | | | | |
| S20 Stage 3 (Catchpit, Gully) | 24 | 24-May-22 A | 21-Jun-22 A | | | | | | | | | | | | | | | | | | | | | | | | | | | | | | | | |
| S20 Stage 3 (Watermain) | 36 | 22-Jun-22 A | 30-Jul-22 A | | | | | | | | | | | | | | | | | | | | | | | | | | | | | | | | |
| S20 Stage 3 (Roadworks) | 24 | 01-Aug-22 A | 27-Aug-22 A | | | | | | | | | | | | | | | | | | | | | | | | | | | | | | | | |
| Future Amenity Area (Gas Station Side) | 168 | 29-Aug-22 A | 28-Apr-23 | | | | | | | | | | | | | | | | | | | | | | | | | | | | | | | | |
| S20 Stage 2 (Roadworks) (Gas Station Side) | 24 | 29-Aug-22 A | 22-Sep-22 A | | | | | | | | | | | | | | | | | | | | | | | | | | | | | | | | |
| Gas Station Side (Landscape) | 48 | 28-Feb-23 | 28-Apr-23 | | | | | | | | | | | | | | | | | | | | | | | | | | | | | | | | |
| Future Footpath | 756 | 18-Mar-22 A | 22-Jul-24 | | | | | | | | | | | | | | | | | | | | | | | | | | | | | | | | |
| Watermain diversion (Part 1 - CKR side) | 24 | 18-Mar-22 A | 06-Aug-22 A | | | | | | | | | | | | | | | | | | | | | | | | | | | | | | | | |
| Watermain diversion (Part 2 - AMAWBC side) | 24 | 03-Apr-22 A | 04-Jun-22 A | | | | | | | | | | | | | | | | | | | | | | | | | | | | | | | | |
| CLP 11kV diversion (Part 2 - AMAWBC side) | 24 | 06-Jun-22 A | 20-Jul-22 A | | | | | | | | | | | | | | | | | | | | | | | | | | | | | | | | |
| Utilities undertaker for AMAWBC (Part 1 - CKR side) | 24 | 21-Jul-22 A | 07-Aug-22 A | | | | | | | | | | | | | | | | | | | | | | | | | | | | | | | | |

- ◆ Milestone
- Planned Bar
- Critical Activity
- ◆ Actual Milestone
- Actual Work

ED/2018/04 Trunk Road T2 and Infrastructure Works for Developments at South Apron

Three Months Rolling Programme (Feb-23)



| Date | Revision | Checked | Approved |
|-----------|----------|---------|----------|
| 18-Dec-19 | 00V1 | WYu | |
| 22-Feb-20 | 01V0 | SPa/LLo | WYu |
| 09-Apr-20 | 01V1 | SPa/LLo | WYu |
| 17-Jul-20 | 01V2 | SPa/LLo | WYu |
| 09-Oct-20 | 01V3 | SPa/LLo | WYu |
| 02-Jul-21 | 02V0 | SPa/LLo | WYu |

| Activity Name | Dur | Start | Finish | 2022 | | | | | | | | | | | | 2023 | | | | | | | | | | | | | | | | | | | |
|--|-----|-------------|-------------|---|----|----|----|----------|----|----|----|---------|----|----|----|---|----|----|----|-------|----|----|----|-------|----|----|----|-----|----|----|----|------|----|----|--|
| | | | | November | | | | December | | | | January | | | | February | | | | March | | | | April | | | | May | | | | June | | | |
| | | | | 30 | 06 | 13 | 20 | 27 | 04 | 11 | 18 | 25 | 01 | 08 | 15 | 22 | 29 | 05 | 12 | 19 | 26 | 02 | 09 | 16 | 23 | 30 | 07 | 14 | 21 | 28 | 04 | 11 | 18 | 25 | |
| C&C - Wall Stage 2 | 12 | 10-Nov-22 A | 29-Nov-22 A | C&C - Wall Stage 2 | | | | | | | | | | | | | | | | | | | | | | | | | | | | | | | |
| Carraigeway Slab | 156 | 15-Dec-22 A | 29-Jun-23 | | | | | | | | | | | | | | | | | | | | | | | | | | | | | | | | |
| Middle Carraigeway Slab (Pour 1) | 12 | 18-Mar-23 | 01-Apr-23 | | | | | | | | | | | | | | | | | | | | | | | | | | | | | | | | |
| Road Slab Falsework erection | 4 | 18-Mar-23 | 22-Mar-23 | | | | | | | | | | | | | ■ Road Slab Falsework erection | | | | | | | | | | | | | | | | | | | |
| Road Slab Rebar Fixing | 4 | 23-Mar-23 | 27-Mar-23 | | | | | | | | | | | | | ■ Road Slab Rebar Fixing | | | | | | | | | | | | | | | | | | | |
| Road Slab Concrete | 1 | 28-Mar-23 | 28-Mar-23 | | | | | | | | | | | | | ■ Road Slab Concrete | | | | | | | | | | | | | | | | | | | |
| Road Slab Gainstrength | 3 | 29-Mar-23 | 31-Mar-23 | | | | | | | | | | | | | ■ Road Slab Gainstrength | | | | | | | | | | | | | | | | | | | |
| Change Access to Middle | 0 | 01-Apr-23 | | | | | | | | | | | | | | ◆ Change Access to Middle | | | | | | | | | | | | | | | | | | | |
| External Carraigeway Slab (EB Pour 2 + WB Pour 3) | 12 | 15-May-23 | 30-May-23 | | | | | | | | | | | | | | | | | | | | | | | | | | | | | | | | |
| Road Slab Falsework erection | 4 | 15-May-23 | 18-May-23 | | | | | | | | | | | | | ■ Road Slab Falsework erection | | | | | | | | | | | | | | | | | | | |
| Road Slab Rebar Fixing | 4 | 19-May-23 | 23-May-23 | | | | | | | | | | | | | ■ Road Slab Rebar Fixing | | | | | | | | | | | | | | | | | | | |
| Road Slab Concrete | 1 | 24-May-23 | 24-May-23 | | | | | | | | | | | | | ■ Road Slab Concrete | | | | | | | | | | | | | | | | | | | |
| Road Slab Gainstrength | 3 | 25-May-23 | 29-May-23 | | | | | | | | | | | | | ■ Road Slab Gainstrength | | | | | | | | | | | | | | | | | | | |
| Change Access to EB & WB | 0 | 30-May-23 | | | | | | | | | | | | | | ◆ Change Access to EB & WB | | | | | | | | | | | | | | | | | | | |
| Cell 1 / 2 | 118 | 15-Dec-22 A | 13-May-23 | | | | | | | | | | | | | | | | | | | | | | | | | | | | | | | | |
| Below Road Level | 118 | 15-Dec-22 A | 13-May-23 | | | | | | | | | | | | | | | | | | | | | | | | | | | | | | | | |
| BRL Middle Wall (Pour 1) | 74 | 15-Dec-22 A | 17-Mar-23 | | | | | | | | | | | | | | | | | | | | | | | | | | | | | | | | |
| Preparation works / Postdrilling | 6 | 15-Dec-22 A | 21-Dec-22 A | ■ Preparation works / Postdrilling | | | | | | | | | | | | | | | | | | | | | | | | | | | | | | | |
| BRL Scaffolding Erection | 6 | 22-Dec-22 A | 30-Dec-22 A | ■ BRL Scaffolding Erection | | | | | | | | | | | | | | | | | | | | | | | | | | | | | | | |
| BRL CJ Tripping & Coupler Exposure | 7 | 31-Dec-22 A | 10-Jan-23 A | ■ BRL CJ Tripping & Coupler Exposure | | | | | | | | | | | | | | | | | | | | | | | | | | | | | | | |
| BRL Waterproofing & Falsework erection | 6 | 11-Jan-23 A | 06-Mar-23 | ■ BRL Waterproofing & Falsework erection | | | | | | | | | | | | | | | | | | | | | | | | | | | | | | | |
| BRL Steel Fixing & Formworks | 6 | 07-Mar-23 | 13-Mar-23 | ■ BRL Steel Fixing & Formworks | | | | | | | | | | | | | | | | | | | | | | | | | | | | | | | |
| BRL Wall Concrete | 1 | 14-Mar-23 | 14-Mar-23 | ■ BRL Wall Concrete | | | | | | | | | | | | | | | | | | | | | | | | | | | | | | | |
| BRL Wall Gainstrength + Formworks removal | 3 | 15-Mar-23 | 17-Mar-23 | ■ BRL Wall Gainstrength + Formworks removal | | | | | | | | | | | | | | | | | | | | | | | | | | | | | | | |
| BRL External (EB Pour 2 + WB Pour 3) | 32 | 01-Apr-23 | 13-May-23 | | | | | | | | | | | | | | | | | | | | | | | | | | | | | | | | |
| Preparation works / Postdrilling | 6 | 01-Apr-23 | 12-Apr-23 | | | | | | | | | | | | | ■ Preparation works / Postdrilling | | | | | | | | | | | | | | | | | | | |
| BRL Scaffolding Erection | 3 | 13-Apr-23 | 15-Apr-23 | | | | | | | | | | | | | ■ BRL Scaffolding Erection | | | | | | | | | | | | | | | | | | | |
| BRL CJ Tripping & Coupler Exposure | 7 | 17-Apr-23 | 24-Apr-23 | | | | | | | | | | | | | ■ BRL CJ Tripping & Coupler Exposure | | | | | | | | | | | | | | | | | | | |
| BRL Waterproofing & Falsework erection | 6 | 25-Apr-23 | 02-May-23 | | | | | | | | | | | | | ■ BRL Waterproofing & Falsework erection | | | | | | | | | | | | | | | | | | | |
| BRL Steel Fixing & Formworks | 6 | 03-May-23 | 09-May-23 | | | | | | | | | | | | | ■ BRL Steel Fixing & Formworks | | | | | | | | | | | | | | | | | | | |
| BRL Wall Concrete | 1 | 10-May-23 | 10-May-23 | | | | | | | | | | | | | ■ BRL Wall Concrete | | | | | | | | | | | | | | | | | | | |
| BRL Wall Gainstrength + Formworks removal | 3 | 11-May-23 | 13-May-23 | | | | | | | | | | | | | ■ BRL Wall Gainstrength + Formworks removal | | | | | | | | | | | | | | | | | | | |
| Road Level Wall | 18 | 30-May-23 | 19-Jun-23 | | | | | | | | | | | | | | | | | | | | | | | | | | | | | | | | |
| RL Middle Wall + External Wall | 18 | 30-May-23 | 19-Jun-23 | | | | | | | | | | | | | | | | | | | | | | | | | | | | | | | | |
| Scaffolding Erection | 4 | 30-May-23 | 02-Jun-23 | | | | | | | | | | | | | ■ Scaffolding Erection | | | | | | | | | | | | | | | | | | | |
| Steel Fixing | 6 | 03-Jun-23 | 09-Jun-23 | | | | | | | | | | | | | ■ Steel Fixing | | | | | | | | | | | | | | | | | | | |
| Formworks | 4 | 10-Jun-23 | 14-Jun-23 | | | | | | | | | | | | | ■ Formworks | | | | | | | | | | | | | | | | | | | |
| Concreting | 1 | 15-Jun-23 | 15-Jun-23 | | | | | | | | | | | | | ■ Concreting | | | | | | | | | | | | | | | | | | | |
| Gainstrength + Formworks removal | 3 | 16-Jun-23 | 19-Jun-23 | | | | | | | | | | | | | ■ Gainstre | | | | | | | | | | | | | | | | | | | |
| Above Road Level Wall | 8 | 20-Jun-23 | 29-Jun-23 | | | | | | | | | | | | | | | | | | | | | | | | | | | | | | | | |
| ARL Middle + External Wall | 8 | 20-Jun-23 | 29-Jun-23 | | | | | | | | | | | | | | | | | | | | | | | | | | | | | | | | |
| Scaffolding Erection | 3 | 20-Jun-23 | 23-Jun-23 | | | | | | | | | | | | | ■ Sca | | | | | | | | | | | | | | | | | | | |
| Steel Fixing | 5 | 24-Jun-23 | 29-Jun-23 | | | | | | | | | | | | | ■ | | | | | | | | | | | | | | | | | | | |
| SUB-SEA TBM TUNNEL - WESTBOUND | 429 | 01-Feb-22 A | 08-Aug-23 | | | | | | | | | | | | | | | | | | | | | | | | | | | | | | | | |
| Precast Fabrication | 392 | 01-Feb-22 A | 27-Jun-23 | | | | | | | | | | | | | | | | | | | | | | | | | | | | | | | | |
| TBM Precast Segments | 273 | 28-Feb-22 A | 14-Apr-23 | | | | | | | | | | | | | | | | | | | | | | | | | | | | | | | | |
| Precast TBM Segment - 80% | 36 | 28-Feb-22 A | 05-Oct-22 A | 80% | | | | | | | | | | | | | | | | | | | | | | | | | | | | | | | |
| Precast TBM Segment - 90% | 36 | 06-Oct-22 A | 20-Jan-23 A | ■ Precast TBM Segment - 90% | | | | | | | | | | | | | | | | | | | | | | | | | | | | | | | |
| Precast TBM Segment - 100% | 36 | 25-Jan-23 A | 14-Apr-23 | ■ Precast TBM Segment - 100% | | | | | | | | | | | | | | | | | | | | | | | | | | | | | | | |
| Service Gallery | 285 | 16-May-22 A | 29-May-23 | | | | | | | | | | | | | | | | | | | | | | | | | | | | | | | | |
| Precast Service Gallery - 20% | 24 | 16-May-22 A | 18-Jul-22 A | | | | | | | | | | | | | | | | | | | | | | | | | | | | | | | | |
| Precast Service Gallery - 30% | 24 | 19-Jul-22 A | 14-Sep-22 A | | | | | | | | | | | | | | | | | | | | | | | | | | | | | | | | |
| Precast Service Gallery - 40% | 24 | 15-Sep-22 A | 20-Oct-22 A | ■ Service Gallery - 40% | | | | | | | | | | | | | | | | | | | | | | | | | | | | | | | |

- ◆ Milestone
- Planned Bar
- Critical Activity
- ◆ Actual Milestone
- Actual Work

ED/2018/04 Trunk Road T2 and Infrastructure Works for Developments at South Apron

Three Months Rolling Programme (Feb-23)



| Date | Revision | Checked | Approved |
|-----------|----------|---------|----------|
| 18-Dec-19 | 00V1 | WYu | |
| 22-Feb-20 | 01V0 | SPa/LLo | WYu |
| 09-Apr-20 | 01V1 | SPa/LLo | WYu |
| 17-Jul-20 | 01V2 | SPa/LLo | WYu |
| 09-Oct-20 | 01V3 | SPa/LLo | WYu |
| 02-Jul-21 | 02V0 | SPa/LLo | WYu |

| Activity Name | Dur | Start | Finish | 2022 | | | | | | | | | | | | 2023 | | | | | | | | | | | | | | | | | | | |
|---|-----|-------------|-------------|---|----|----|----|----------|----|----|----|---------|----|----|----|----------|----|----|----|-------|----|----|----|-------|----|----|----|-----|----|----|----|------|----|----|----|
| | | | | November | | | | December | | | | January | | | | February | | | | March | | | | April | | | | May | | | | June | | | |
| | | | | 30 | 06 | 13 | 20 | 27 | 04 | 11 | 18 | 25 | 01 | 08 | 15 | 22 | 29 | 05 | 12 | 19 | 26 | 05 | 12 | 19 | 26 | 02 | 09 | 16 | 23 | 30 | 07 | 14 | 21 | 28 | 04 |
| Precast Service Gallery - 50% | 34 | 21-Oct-22 A | 29-Nov-22 A | Precast Service Gallery - 50% | | | | | | | | | | | | | | | | | | | | | | | | | | | | | | | |
| Precast Service Gallery - 60% | 24 | 30-Nov-22 A | 30-Dec-22 A | Precast Service Gallery - 60% | | | | | | | | | | | | | | | | | | | | | | | | | | | | | | | |
| Precast Service Gallery - 70% | 24 | 31-Dec-22 A | 10-Feb-23 A | Precast Service Gallery - 70% | | | | | | | | | | | | | | | | | | | | | | | | | | | | | | | |
| Precast Service Gallery - 80% | 24 | 11-Feb-23 A | 27-Mar-23 | Precast Service Gallery - 80% | | | | | | | | | | | | | | | | | | | | | | | | | | | | | | | |
| Precast Service Gallery - 90% | 24 | 28-Mar-23 | 28-Apr-23 | Precast Service Gallery - 90% | | | | | | | | | | | | | | | | | | | | | | | | | | | | | | | |
| Precast Service Gallery - 100% | 24 | 29-Apr-23 | 29-May-23 | Precast Service Gallery - 100% | | | | | | | | | | | | | | | | | | | | | | | | | | | | | | | |
| OHVD Slab | 392 | 01-Feb-22 A | 27-Jun-23 | | | | | | | | | | | | | | | | | | | | | | | | | | | | | | | | |
| Precast OHVD Slab - Mould Fabrication & Setup | 72 | 01-Feb-22 A | 21-Sep-22 A | on & Setup | | | | | | | | | | | | | | | | | | | | | | | | | | | | | | | |
| Precast OHVD Slab - Inspection | 12 | 22-Sep-22 A | 13-Dec-22 A | Precast OHVD Slab - Inspection | | | | | | | | | | | | | | | | | | | | | | | | | | | | | | | |
| Precast OHVD Slab - Mass Production Start | 0 | 14-Dec-22 A | | Precast OHVD Slab - Mass Production Start | | | | | | | | | | | | | | | | | | | | | | | | | | | | | | | |
| Precast OHVD Slab - 3% | 24 | 14-Dec-22 A | 31-Jan-23 A | Precast OHVD Slab - 3% | | | | | | | | | | | | | | | | | | | | | | | | | | | | | | | |
| Precast OHVD Slab - 6% | 24 | 31-Jan-23 A | 27-Feb-23 A | Precast OHVD Slab - 6% | | | | | | | | | | | | | | | | | | | | | | | | | | | | | | | |
| Precast OHVD Slab - 10% | 24 | 28-Feb-23 | 27-Mar-23 | Precast OHVD Slab - 10% | | | | | | | | | | | | | | | | | | | | | | | | | | | | | | | |
| Precast OHVD Slab - 20% | 24 | 28-Mar-23 | 28-Apr-23 | Precast OHVD Slab - 20% | | | | | | | | | | | | | | | | | | | | | | | | | | | | | | | |
| Precast OHVD Slab - 30% | 24 | 29-Apr-23 | 29-May-23 | Precast OHVD Slab - 30% | | | | | | | | | | | | | | | | | | | | | | | | | | | | | | | |
| Precast OHVD Slab - 40% | 24 | 30-May-23 | 27-Jun-23 | Precast OHVD Slab - 40% | | | | | | | | | | | | | | | | | | | | | | | | | | | | | | | |
| Site Establishment | 48 | 10-Jun-23 | 08-Aug-23 | | | | | | | | | | | | | | | | | | | | | | | | | | | | | | | | |
| Gantry Crane Setup for TBM Assembly | 48 | 10-Jun-23 | 08-Aug-23 | | | | | | | | | | | | | | | | | | | | | | | | | | | | | | | | |
| Gantry Crane - Dismantling | 48 | 10-Jun-23 | 08-Aug-23 | | | | | | | | | | | | | | | | | | | | | | | | | | | | | | | | |
| TBM Tunnelling | 372 | 24-May-22 A | 11-Jun-23 | | | | | | | | | | | | | | | | | | | | | | | | | | | | | | | | |
| WB TBM Stoppage due to Main Drive issue | 7 | 24-May-22 A | 17-Jul-22 A | | | | | | | | | | | | | | | | | | | | | | | | | | | | | | | | |
| WB TBM Tunnelling CH6752-6756 ALL/CDG 114m | 1 | 18-Jul-22 A | 22-Jul-22 A | | | | | | | | | | | | | | | | | | | | | | | | | | | | | | | | |
| WB TBM Tunnelling CH6756-6777 CDG/Boulder 135m | 4 | 23-Jul-22 A | 31-Jul-22 A | | | | | | | | | | | | | | | | | | | | | | | | | | | | | | | | |
| WB TBM Tunnelling CH6777-6789 CDG/Boulder 147m | 3 | 01-Aug-22 A | 06-Aug-22 A | | | | | | | | | | | | | | | | | | | | | | | | | | | | | | | | |
| WB TBM Tunnelling CH6789-6797 ALL/CDG 155m | 38 | 07-Aug-22 A | 12-Aug-22 A | | | | | | | | | | | | | | | | | | | | | | | | | | | | | | | | |
| WB TBM Stoppage for ISIG 1 Installation | 9 | 13-Aug-22 A | 26-Aug-22 A | | | | | | | | | | | | | | | | | | | | | | | | | | | | | | | | |
| WB TBM Tunnelling CH6797-7098 ALL/CDG 456m | 37 | 27-Aug-22 A | 28-Sep-22 A | WB TBM Tunnelling CH6797-7098 ALL/CDG 456m | | | | | | | | | | | | | | | | | | | | | | | | | | | | | | | |
| WB TBM Tunnelling CH7098-7198 ALL/CDG 556m | 11 | 29-Sep-22 A | 06-Oct-22 A | WB TBM Tunnelling CH7098-7198 ALL/CDG 556m | | | | | | | | | | | | | | | | | | | | | | | | | | | | | | | |
| WB TBM Tunnelling CH7198-7218 ALL/CDG 576m | 2 | 07-Oct-22 A | 07-Oct-22 A | WB TBM Tunnelling CH7198-7218 ALL/CDG 576m | | | | | | | | | | | | | | | | | | | | | | | | | | | | | | | |
| WB TBM Tunnelling CH7218-7240 CDG/Boulder 598m | 3 | 08-Oct-22 A | 09-Oct-22 A | WB TBM Tunnelling CH7218-7240 CDG/Boulder 598m | | | | | | | | | | | | | | | | | | | | | | | | | | | | | | | |
| WB TBM Tunnelling CH7240-7284 ALL/CDG 642m | 4 | 10-Oct-22 A | 12-Oct-22 A | WB TBM Tunnelling CH7240-7284 ALL/CDG 642m | | | | | | | | | | | | | | | | | | | | | | | | | | | | | | | |
| WB TBM Tunnelling CH7284-7379 ALL/CDG 737m | 9 | 13-Oct-22 A | 23-Oct-22 A | WB TBM Tunnelling CH7284-7379 ALL/CDG 737m | | | | | | | | | | | | | | | | | | | | | | | | | | | | | | | |
| WB TBM Tunnelling CH7379-7391 CDG/Boulder 749m | 2 | 24-Oct-22 A | 28-Oct-22 A | WB TBM Tunnelling CH7379-7391 CDG/Boulder 749m | | | | | | | | | | | | | | | | | | | | | | | | | | | | | | | |
| WB TBM Tunnelling CH7391-7434 Boulder 792m | 7 | 29-Oct-22 A | 13-Nov-22 A | WB TBM Tunnelling CH7391-7434 Boulder 792m | | | | | | | | | | | | | | | | | | | | | | | | | | | | | | | |
| WB TBM Tunnelling CH7434-7466 CDG/Boulder 824m | 4 | 14-Nov-22 A | 27-Nov-22 A | WB TBM Tunnelling CH7434-7466 CDG/Boulder 824m | | | | | | | | | | | | | | | | | | | | | | | | | | | | | | | |
| WB TBM Tunnelling CH7466-7623 ALL/CDG 981m | 15 | 28-Nov-22 A | 17-Jan-23 A | WB TBM Tunnelling CH7466-7623 ALL/CDG 981m | | | | | | | | | | | | | | | | | | | | | | | | | | | | | | | |
| WB TBM Tunnelling CH7623-7650 CDG/Boulder 1008m | 4 | 18-Jan-23 A | 21-Jan-23 A | WB TBM Tunnelling CH7623-7650 CDG/Boulder 1008m | | | | | | | | | | | | | | | | | | | | | | | | | | | | | | | |
| WB TBM Tunnelling CH7650-7722 ALL/CDG 1080m | 7 | 22-Jan-23 A | 06-Feb-23 A | WB TBM Tunnelling CH7650-7722 ALL/CDG 1080m | | | | | | | | | | | | | | | | | | | | | | | | | | | | | | | |
| WB TBM Tunnelling CH7722-7792 CDG/Boulder 1150m | 9 | 07-Feb-23 A | 15-Feb-23 A | WB TBM Tunnelling CH7722-7792 CDG/Boulder 1150m | | | | | | | | | | | | | | | | | | | | | | | | | | | | | | | |
| WB TBM Tunnelling CH7792-8445 ALL/CDG 1803m | 53 | 16-Feb-23 A | 21-Apr-23 | WB TBM Tunnelling CH7792-8445 ALL/CDG 1803m | | | | | | | | | | | | | | | | | | | | | | | | | | | | | | | |
| WB TBM Tunnelling CH8445-8532 CDG/Boulder 1890m | 12 | 22-Apr-23 | 03-May-23 | WB TBM Tunnelling CH8445-8532 CDG/Boulder 1890m | | | | | | | | | | | | | | | | | | | | | | | | | | | | | | | |
| WB TBM Tunnelling CH8532-8730 Boulder/Granite 2088m | 39 | 04-May-23 | 11-Jun-23 | WB TBM Tunnelling CH8532-8730 Boulder/Granite 2088m | | | | | | | | | | | | | | | | | | | | | | | | | | | | | | | |
| Gallery B Installation | 232 | 14-Aug-22 A | 19-Jun-23 | | | | | | | | | | | | | | | | | | | | | | | | | | | | | | | | |
| ISIG Assembly at Cell 2 | 12 | 15-Aug-22 A | 14-Sep-22 A | | | | | | | | | | | | | | | | | | | | | | | | | | | | | | | | |
| WB TBM Tunnel - Gallery B CH6642-6705 63m CP7 | 6 | 15-Sep-22 A | 26-Sep-22 A | WB TBM Tunnel - Gallery B CH6642-6705 63m CP7 | | | | | | | | | | | | | | | | | | | | | | | | | | | | | | | |
| WB Sub-sea Gallery B Installation started | 0 | 15-Sep-22 A | | | | | | | | | | | | | | | | | | | | | | | | | | | | | | | | | |
| WB TBM Tunnel - Gallery B CH6705-6803 100m CP8 | 11 | 27-Sep-22 A | 06-Oct-22 A | WB TBM Tunnel - Gallery B CH6705-6803 100m CP8 | | | | | | | | | | | | | | | | | | | | | | | | | | | | | | | |
| WB TBM Tunnel - Gallery B CH6803-6904 100m CP9 | 10 | 07-Oct-22 A | 25-Oct-22 A | WB TBM Tunnel - Gallery B CH6803-6904 100m CP9 | | | | | | | | | | | | | | | | | | | | | | | | | | | | | | | |
| WB TBM Tunnel - Gallery B CH6904-7004 100m CP10 | 8 | 26-Oct-22 A | 05-Nov-22 A | WB TBM Tunnel - Gallery B CH6904-7004 100m CP10 | | | | | | | | | | | | | | | | | | | | | | | | | | | | | | | |
| WB TBM Tunnel - Gallery B CH7004-7103 100m CP11 | 10 | 07-Nov-22 A | 17-Nov-22 A | WB TBM Tunnel - Gallery B CH7004-7103 100m CP11 | | | | | | | | | | | | | | | | | | | | | | | | | | | | | | | |
| WB TBM Tunnel - Gallery B CH7103-7203 100m CP12 | 10 | 18-Nov-22 A | 30-Nov-22 A | WB TBM Tunnel - Gallery B CH7103-7203 100m CP12 | | | | | | | | | | | | | | | | | | | | | | | | | | | | | | | |
| WB TBM Tunnel - Gallery B CH7203-7303 100m CP13 | 7 | 01-Dec-22 A | 10-Dec-22 A | WB TBM Tunnel - Gallery B CH7203-7303 100m CP13 | | | | | | | | | | | | | | | | | | | | | | | | | | | | | | | |
| WB TBM Tunnel - Gallery B CH7303-7403 100m CP14 | 7 | 12-Dec-22 A | 10-Jan-23 A | WB TBM Tunnel - Gallery B CH7303-7403 100m CP14 | | | | | | | | | | | | | | | | | | | | | | | | | | | | | | | |

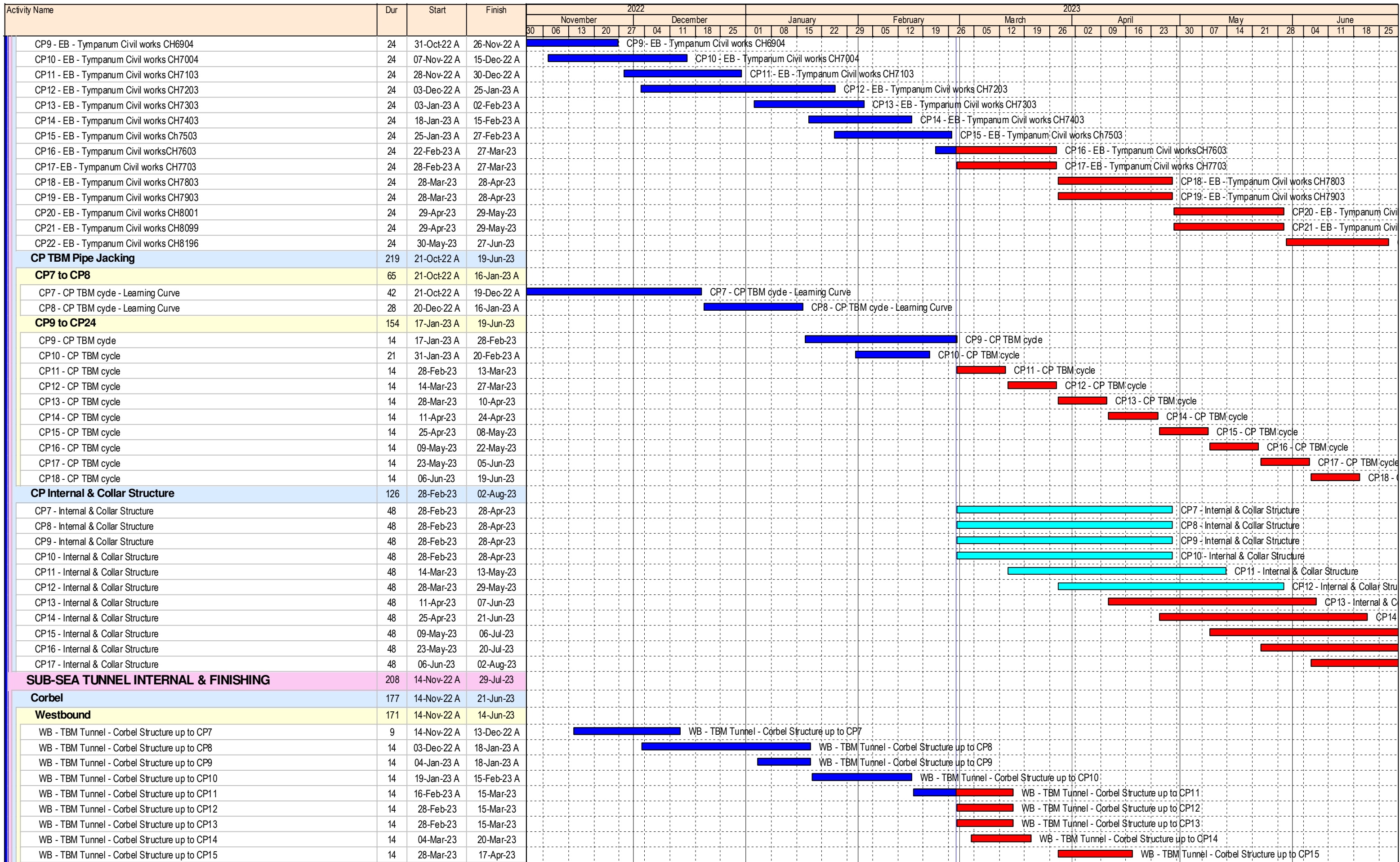
- ◆ Milestone
- Planned Bar
- Critical Activity
- ◆ Actual Milestone
- Actual Work

ED/2018/04 Trunk Road T2 and Infrastructure Works for Developments at South Apron

Three Months Rolling Programme (Feb-23)



| Date | Revision | Checked | Approved |
|-----------|----------|---------|----------|
| 18-Dec-19 | 00V1 | WYu | |
| 22-Feb-20 | 01V0 | SPa/LLo | WYu |
| 09-Apr-20 | 01V1 | SPa/LLo | WYu |
| 17-Jul-20 | 01V2 | SPa/LLo | WYu |
| 09-Oct-20 | 01V3 | SPa/LLo | WYu |
| 02-Jul-21 | 02V0 | SPa/LLo | WYu |



- ◆ Milestone
- Planned Bar
- Critical Activity
- ◆ Actual Milestone
- Actual Work

ED/2018/04 Trunk Road T2 and Infrastructure Works for Developments at South Apron

Three Months Rolling Programme (Feb-23)



| Date | Revision | Checked | Approved |
|-----------|----------|---------|----------|
| 18-Dec-19 | 00V1 | WYu | |
| 22-Feb-20 | 01V0 | SPa/LLo | WYu |
| 09-Apr-20 | 01V1 | SPa/LLo | WYu |
| 17-Jul-20 | 01V2 | SPa/LLo | WYu |
| 09-Oct-20 | 01V3 | SPa/LLo | WYu |
| 02-Jul-21 | 02V0 | SPa/LLo | WYu |

| Activity Name | Dur | Start | Finish | 2022 | | | | | | | | | | | | 2023 | | | | | | | | | | | | | | | | | | | |
|--|-----|-------------|-------------|-------------|----|----|----|----------|----|----|----|---------|----|----|----|--|----|----|----|-------|----|----|----|-------|----|----|----|-----|----|----|----|------|----|----|--|
| | | | | November | | | | December | | | | January | | | | February | | | | March | | | | April | | | | May | | | | June | | | |
| | | | | 30 | 06 | 13 | 20 | 27 | 04 | 11 | 18 | 25 | 01 | 08 | 15 | 22 | 29 | 05 | 12 | 19 | 26 | 02 | 09 | 16 | 23 | 30 | 07 | 14 | 21 | 28 | 04 | 11 | 18 | 25 | |
| EB - D&Br Tunnel - CH9030-9010 Type D - Excavation SG | 30 | 29-Nov-22 A | 31-Jan-23 A | [Gantt Bar] | | | | | | | | | | | | EB - D&Br Tunnel - CH9030-9010 Type D - Excavation SG | | | | | | | | | | | | | | | | | | | |
| EB - D&Br Tunnel - CH9010-8990 Type D - Excavation SG | 38 | 01-Feb-23 A | 27-Feb-23 A | [Gantt Bar] | | | | | | | | | | | | EB - D&Br Tunnel - CH9010-8990 Type D - Excavation SG | | | | | | | | | | | | | | | | | | | |
| EB - D&Br Tunnel - CH8990-8976 Type D - Excavation Bench | 32 | 28-Feb-23 A | 31-Mar-23 | [Gantt Bar] | | | | | | | | | | | | EB - D&Br Tunnel - CH8990-8976 Type D - Excavation Bench | | | | | | | | | | | | | | | | | | | |
| Cross Passage | 71 | 01-Apr-23 | 30-Jun-23 | [Gantt Bar] | | | | | | | | | | | | | | | | | | | | | | | | | | | | | | | |
| CP28 | 24 | 02-Jun-23 | 30-Jun-23 | [Gantt Bar] | | | | | | | | | | | | | | | | | | | | | | | | | | | | | | | |
| CP28 - Grouting from WB TBM Tunnel | 18 | 02-Jun-23 | 23-Jun-23 | [Gantt Bar] | | | | | | | | | | | | | | | | | | | | | | | | | | | | | | | |
| CP28 - Open WB TBM Segment | 6 | 24-Jun-23 | 30-Jun-23 | [Gantt Bar] | | | | | | | | | | | | | | | | | | | | | | | | | | | | | | | |
| CP30 | 42 | 01-Apr-23 | 25-May-23 | [Gantt Bar] | | | | | | | | | | | | | | | | | | | | | | | | | | | | | | | |
| CP30 - Excavation - Drill & break | 30 | 01-Apr-23 | 11-May-23 | [Gantt Bar] | | | | | | | | | | | | CP30 - Excavation - Drill & break | | | | | | | | | | | | | | | | | | | |
| CP30 - Base Slab & Kicker | 12 | 12-May-23 | 25-May-23 | [Gantt Bar] | | | | | | | | | | | | CP30 - Base Slab & Kicker | | | | | | | | | | | | | | | | | | | |
| DRILL & BLAST TUNNEL [D&BL] | 633 | 11-Apr-22 A | 18-Sep-23 | [Gantt Bar] | | | | | | | | | | | | | | | | | | | | | | | | | | | | | | | |
| Tunnel Excavation | 36 | 01-Aug-22 A | 23-Nov-22 A | [Gantt Bar] | | | | | | | | | | | | | | | | | | | | | | | | | | | | | | | |
| Westbound | 36 | 01-Aug-22 A | 23-Nov-22 A | [Gantt Bar] | | | | | | | | | | | | | | | | | | | | | | | | | | | | | | | |
| Full Face Drill & Blast | 36 | 01-Aug-22 A | 23-Nov-22 A | [Gantt Bar] | | | | | | | | | | | | | | | | | | | | | | | | | | | | | | | |
| WB - D&BI Tunnel - 80 Extension Excavation | 36 | 01-Aug-22 A | 23-Nov-22 A | [Gantt Bar] | | | | | | | | | | | | WB - D&BI Tunnel - 80 Extension Excavation | | | | | | | | | | | | | | | | | | | |
| Tunnel Structure WB Type A | 305 | 02-Jul-22 A | 12-Jul-23 | [Gantt Bar] | | | | | | | | | | | | | | | | | | | | | | | | | | | | | | | |
| SUS - EB OHVD | 96 | 28-Feb-23 | 27-Jun-23 | [Gantt Bar] | | | | | | | | | | | | | | | | | | | | | | | | | | | | | | | |
| SUS - OHVD Formwork Relocation (EB to Branch) | 12 | 28-Jun-23 | 12-Jul-23 | [Gantt Bar] | | | | | | | | | | | | | | | | | | | | | | | | | | | | | | | |
| TBM Dismantling Preparation | 99 | 28-Nov-22 A | 29-Mar-23 | [Gantt Bar] | | | | | | | | | | | | | | | | | | | | | | | | | | | | | | | |
| WB - TBM Dismantling - Dismantling Cavern Enlargement | 12 | 28-Nov-22 A | 10-Dec-22 A | [Gantt Bar] | | | | | | | | | | | | WB - TBM Dismantling - Dismantling Cavern Enlargement | | | | | | | | | | | | | | | | | | | |
| WB - TBM Dismantling - Dismantling Gantry Installation | 26 | 28-Feb-23 | 29-Mar-23 | [Gantt Bar] | | | | | | | | | | | | WB - TBM Dismantling - Dismantling Gantry Installation | | | | | | | | | | | | | | | | | | | |
| SG Preparation | 233 | 02-Jul-22 A | 14-Apr-23 | [Gantt Bar] | | | | | | | | | | | | | | | | | | | | | | | | | | | | | | | |
| WB - Bay 4 - CH9172-9179 - Kicker (SG side) | 5 | 02-Jul-22 A | 07-Jul-22 A | [Gantt Bar] | | | | | | | | | | | | | | | | | | | | | | | | | | | | | | | |
| WB - Bay 5 - CH9179-9191 - Kicker (SG side) | 5 | 05-Jul-22 A | 09-Jul-22 A | [Gantt Bar] | | | | | | | | | | | | | | | | | | | | | | | | | | | | | | | |
| WB - Bay 6 - CH9191-9203 - Kicker (SG side) | 6 | 03-Feb-23 A | 09-Feb-23 A | [Gantt Bar] | | | | | | | | | | | | WB - Bay 6 - CH9191-9203 - Kicker (SG side) | | | | | | | | | | | | | | | | | | | |
| WB - Bay 11 - CH9251-9258 - Kicker (SG side) | 5 | 06-Mar-23 | 10-Mar-23 | [Gantt Bar] | | | | | | | | | | | | WB - Bay 11 - CH9251-9258 - Kicker (SG side) | | | | | | | | | | | | | | | | | | | |
| WB - Bay 10 - CH9239-9251 - Kicker (SG side) | 5 | 11-Mar-23 | 16-Mar-23 | [Gantt Bar] | | | | | | | | | | | | WB - Bay 10 - CH9239-9251 - Kicker (SG side) | | | | | | | | | | | | | | | | | | | |
| WB - Bay 9 - CH9227-9239 - Kicker (SG side) | 5 | 30-Mar-23* | 04-Apr-23 | [Gantt Bar] | | | | | | | | | | | | WB - Bay 9 - CH9227-9239 - Kicker (SG side) | | | | | | | | | | | | | | | | | | | |
| WB - Bay 3 - CH9160-9172 - Kicker (SG side) | 5 | 06-Apr-23 | 14-Apr-23 | [Gantt Bar] | | | | | | | | | | | | WB - Bay 3 - CH9160-9172 - Kicker (SG side) | | | | | | | | | | | | | | | | | | | |
| SG Installation | 5 | 28-Feb-23 | 04-Mar-23 | [Gantt Bar] | | | | | | | | | | | | | | | | | | | | | | | | | | | | | | | |
| WB - Bay 11 - CH9251-9258 - SG Installation | 2 | 28-Feb-23 | 01-Mar-23 | [Gantt Bar] | | | | | | | | | | | | WB - Bay 11 - CH9251-9258 - SG Installation | | | | | | | | | | | | | | | | | | | |
| WB - Bay 10 - CH9239-9251 - SG Installation | 3 | 02-Mar-23 | 04-Mar-23 | [Gantt Bar] | | | | | | | | | | | | WB - Bay 10 - CH9239-9251 - SG Installation | | | | | | | | | | | | | | | | | | | |
| Kicker | 68 | 29-Dec-22 A | 22-Mar-23 | [Gantt Bar] | | | | | | | | | | | | | | | | | | | | | | | | | | | | | | | |
| WB - Bay 9 - CH9227-9239 - Kicker (non SG side) | 5 | 29-Dec-22 A | 04-Jan-23 A | [Gantt Bar] | | | | | | | | | | | | WB - Bay 9 - CH9227-9239 - Kicker (non SG side) | | | | | | | | | | | | | | | | | | | |
| WB - Bay 8 - CH9215-9227 - Kicker (non SG side) | 5 | 03-Jan-23 A | 07-Jan-23 A | [Gantt Bar] | | | | | | | | | | | | WB - Bay 8 - CH9215-9227 - Kicker (non SG side) | | | | | | | | | | | | | | | | | | | |
| WB - Bay 7 - CH9203-9215 - Kicker (non SG side) | 5 | 06-Jan-23 A | 11-Jan-23 A | [Gantt Bar] | | | | | | | | | | | | WB - Bay 7 - CH9203-9215 - Kicker (non SG side) | | | | | | | | | | | | | | | | | | | |
| WB - Bay 6 - CH9191-9203 - Kicker (non SG side) | 5 | 10-Jan-23 A | 14-Jan-23 A | [Gantt Bar] | | | | | | | | | | | | WB - Bay 6 - CH9191-9203 - Kicker (non SG side) | | | | | | | | | | | | | | | | | | | |
| WB - Bay 5 - CH9179-9191 - Kicker (non SG side) | 5 | 13-Jan-23 A | 18-Jan-23 A | [Gantt Bar] | | | | | | | | | | | | WB - Bay 5 - CH9179-9191 - Kicker (non SG side) | | | | | | | | | | | | | | | | | | | |
| WB - Bay 4 - CH9172-9179 - Kicker (non SG side) | 5 | 16-Jan-23 A | 20-Jan-23 A | [Gantt Bar] | | | | | | | | | | | | WB - Bay 4 - CH9172-9179 - Kicker (non SG side) | | | | | | | | | | | | | | | | | | | |
| WB - Bay 3 - CH9160-9172 - Kicker (non SG side) | 5 | 18-Jan-23 A | 26-Jan-23 A | [Gantt Bar] | | | | | | | | | | | | WB - Bay 3 - CH9160-9172 - Kicker (non SG side) | | | | | | | | | | | | | | | | | | | |
| WB - Bay 10 - CH9239-9251 - Kicker (non SG side) | 5 | 13-Feb-23 A | 17-Feb-23 A | [Gantt Bar] | | | | | | | | | | | | WB - Bay 10 - CH9239-9251 - Kicker (non SG side) | | | | | | | | | | | | | | | | | | | |
| WB - Bay 11 - CH9251-9258 - Kicker (non SG side) | 5 | 17-Mar-23 | 22-Mar-23 | [Gantt Bar] | | | | | | | | | | | | WB - Bay 11 - CH9251-9258 - Kicker (non SG side) | | | | | | | | | | | | | | | | | | | |
| Base Slab | 101 | 03-Jan-23 A | 09-May-23 | [Gantt Bar] | | | | | | | | | | | | | | | | | | | | | | | | | | | | | | | |
| WB - Bay 5 - CH9179-9191 - Base Slab | 3 | 03-Jan-23 A | 05-Jan-23 A | [Gantt Bar] | | | | | | | | | | | | WB - Bay 5 - CH9179-9191 - Base Slab | | | | | | | | | | | | | | | | | | | |
| WB - Bay 11 - CH9251-9258 - Base Slab | 3 | 23-Mar-23 | 25-Mar-23 | [Gantt Bar] | | | | | | | | | | | | WB - Bay 11 - CH9251-9258 - Base Slab | | | | | | | | | | | | | | | | | | | |
| WB - Bay 10 - CH9239-9251 - Base Slab | 3 | 27-Mar-23 | 29-Mar-23 | [Gantt Bar] | | | | | | | | | | | | WB - Bay 10 - CH9239-9251 - Base Slab | | | | | | | | | | | | | | | | | | | |
| WB - Bay 9 - CH9227-9239 - Base Slab | 6 | 30-Mar-23 | 06-Apr-23 | [Gantt Bar] | | | | | | | | | | | | WB - Bay 9 - CH9227-9239 - Base Slab | | | | | | | | | | | | | | | | | | | |
| WB - Bay 8 - CH9215-9227 - Base Slab | 6 | 11-Apr-23 | 17-Apr-23 | [Gantt Bar] | | | | | | | | | | | | WB - Bay 8 - CH9215-9227 - Base Slab | | | | | | | | | | | | | | | | | | | |
| WB - Bay 7 - CH9203-9215 - Base Slab | 6 | 18-Apr-23 | 24-Apr-23 | [Gantt Bar] | | | | | | | | | | | | WB - Bay 7 - CH9203-9215 - Base Slab | | | | | | | | | | | | | | | | | | | |
| WB - Bay 6 - CH9191-9203 - Base Slab | 6 | 25-Apr-23 | 02-May-23 | [Gantt Bar] | | | | | | | | | | | | WB - Bay 6 - CH9191-9203 - Base Slab | | | | | | | | | | | | | | | | | | | |
| WB - Bay 4 - CH9172-9179 - Base Slab | 3 | 03-May-23 | 05-May-23 | [Gantt Bar] | | | | | | | | | | | | WB - Bay 4 - CH9172-9179 - Base Slab | | | | | | | | | | | | | | | | | | | |
| WB - Bay 3 - CH9160-9172 - Base Slab | 3 | 06-May-23 | 09-May-23 | [Gantt Bar] | | | | | | | | | | | | WB - Bay 3 - CH9160-9172 - Base Slab | | | | | | | | | | | | | | | | | | | |

- ◆ Milestone
- Planned Bar
- Critical Activity
- ◆ Actual Milestone
- Actual Work

ED/2018/04 Trunk Road T2 and Infrastructure Works for Developments at South Apron

Three Months Rolling Programme (Feb-23)



| Date | Revision | Checked | Approved |
|-----------|----------|---------|----------|
| 18-Dec-19 | 00V1 | WYu | |
| 22-Feb-20 | 01V0 | SPa/LLo | WYu |
| 09-Apr-20 | 01V1 | SPa/LLo | WYu |
| 17-Jul-20 | 01V2 | SPa/LLo | WYu |
| 09-Oct-20 | 01V3 | SPa/LLo | WYu |
| 02-Jul-21 | 02V0 | SPa/LLo | WYu |

| Activity Name | Dur | Start | Finish | 2022 | | | | | | | | | | | | 2023 | | | | | | | | | | | | | | | | | | | |
|---|------------|--------------------|--------------------|---|----|----|----|----------|----|----|----|---------|----|----|----|----------|----|----|----|-------|----|----|----|-------|----|----|----|-----|----|----|----|------|----|----|--|
| | | | | November | | | | December | | | | January | | | | February | | | | March | | | | April | | | | May | | | | June | | | |
| | | | | 30 | 06 | 13 | 20 | 27 | 04 | 11 | 18 | 25 | 01 | 08 | 15 | 22 | 29 | 05 | 12 | 19 | 26 | 02 | 09 | 16 | 23 | 30 | 07 | 14 | 21 | 28 | 04 | 11 | 18 | 25 | |
| EB - Earth Mat 12-17 Drilling, Installation and Testing | 18 | 07-Oct-22 A | 14-Dec-22 A | EB - Earth Mat 12-17 Drilling, Installation and Testing | | | | | | | | | | | | | | | | | | | | | | | | | | | | | | | |
| EB - D&BI Tunnel - CH9100-9050 Type A - SG Preparation | 49 | 18-Oct-22 A | 13-Dec-22 A | EB - D&BI Tunnel - CH9100-9050 Type A - SG Preparation | | | | | | | | | | | | | | | | | | | | | | | | | | | | | | | |
| EB - D&BI Tunnel - CH9100-9050 Type A - SG Installation | 58 | 19-Oct-22 A | 24-Dec-22 A | EB - D&BI Tunnel - CH9100-9050 Type A - SG Installation | | | | | | | | | | | | | | | | | | | | | | | | | | | | | | | |
| EB - Earth Mat 12-17 Drilling | 15 | 25-Nov-22 A | 20-Dec-22 A | EB - Earth Mat 12-17 Drilling | | | | | | | | | | | | | | | | | | | | | | | | | | | | | | | |
| EB - D&BI Tunnel - CH9100-9050 Type A - Kicker | 25 | 07-Dec-22 A | 07-Feb-23 A | EB - D&BI Tunnel - CH9100-9050 Type A - Kicker | | | | | | | | | | | | | | | | | | | | | | | | | | | | | | | |
| EB - Earth Mat 12-17 Testing | 1 | 17-Dec-22 A | 17-Dec-22 A | EB - Earth Mat 12-17 Testing | | | | | | | | | | | | | | | | | | | | | | | | | | | | | | | |
| EB - D&BI Tunnel - CH9100-9050 Type A - Base slab | 28 | 20-Dec-22 A | 15-Feb-23 A | EB - D&BI Tunnel - CH9100-9050 Type A - Base slab | | | | | | | | | | | | | | | | | | | | | | | | | | | | | | | |
| EB - D&BI Tunnel - CH9135-9050 Type C - Wall (6m bay, 15bay, 5d/bay) | 75 | 16-Feb-23 A | 01-Jun-23 | EB - D&BI Tunnel - CH9135-9050 Type C - Wall (6m bay, 15bay, 5d/bay) | | | | | | | | | | | | | | | | | | | | | | | | | | | | | | | |
| EB - D&BI Tunnel - A/C/E Junction End Wall | 52 | 27-May-23 | 28-Jul-23 | EB - D&BI Tunnel - A/C/E Junction End Wall | | | | | | | | | | | | | | | | | | | | | | | | | | | | | | | |
| Tunnel Structure EB Type A (D&Br) | 138 | 01-Apr-23 | 18-Sep-23 | | | | | | | | | | | | | | | | | | | | | | | | | | | | | | | | |
| EB - D&BI Tunnel - CH8988-9050 Type A - SG Preparation | 17 | 01-Apr-23 | 25-Apr-23 | EB - D&BI Tunnel - CH8988-9050 Type A - SG Preparation | | | | | | | | | | | | | | | | | | | | | | | | | | | | | | | |
| EB - D&BI Tunnel - CH8988-9050 Type A - SG Installation | 12 | 26-Apr-23 | 10-May-23 | EB - D&BI Tunnel - CH8988-9050 Type A - SG Installation | | | | | | | | | | | | | | | | | | | | | | | | | | | | | | | |
| EB - D&BI Tunnel - CH8988-9050 Type A - Kicker | 30 | 11-May-23 | 15-Jun-23 | EB - D&BI Tunnel - CH8988-9050 Type A - Kicker | | | | | | | | | | | | | | | | | | | | | | | | | | | | | | | |
| EB - D&Br TBM Chamber - Kicker | 6 | 05-Sep-23 | 11-Sep-23 | EB - D&Br TBM Chamber - Kicker | | | | | | | | | | | | | | | | | | | | | | | | | | | | | | | |
| EB D&Br TBM Chamber - Temp Base Slab | 6 | 12-Sep-23 | 18-Sep-23 | EB D&Br TBM Chamber - Temp Base Slab | | | | | | | | | | | | | | | | | | | | | | | | | | | | | | | |
| Tunnel Structure S01 Branch Tunnel | 242 | 11-Jul-22 A | 25-May-23 | | | | | | | | | | | | | | | | | | | | | | | | | | | | | | | | |
| EB - D&BI Tunnel - S01 Branch Tunnel - Drainage Installation | 40 | 11-Jul-22 A | 05-Nov-22 A | EB - D&BI Tunnel - S01 Branch Tunnel - Drainage Installation | | | | | | | | | | | | | | | | | | | | | | | | | | | | | | | |
| EB - D&BI Tunnel - S01 Branch Tunnel - Base Slab & Kicker (3d/bay) | 21 | 20-Jul-22 A | 19-Nov-22 A | EB - D&BI Tunnel - S01 Branch Tunnel - Base Slab & Kicker (3d/bay) | | | | | | | | | | | | | | | | | | | | | | | | | | | | | | | |
| EB - Lining Fwk S01 Branch Tunnel Assembly | 30 | 11-Mar-23 | 19-Apr-23 | EB - Lining Fwk S01 Branch Tunnel Assembly | | | | | | | | | | | | | | | | | | | | | | | | | | | | | | | |
| EB - D&BI Tunnel - S01 Branch Tunnel - Lining Structure (5d/bay, 145 - 215) | 30 | 20-Apr-23 | 25-May-23 | EB - D&BI Tunnel - S01 Branch Tunnel - Lining Structure (5d/bay, 145 - 215) | | | | | | | | | | | | | | | | | | | | | | | | | | | | | | | |
| Cross Passage | 379 | 11-Apr-22 A | 24-Jul-23 | | | | | | | | | | | | | | | | | | | | | | | | | | | | | | | | |
| CP33 | 379 | 11-Apr-22 A | 24-Jul-23 | | | | | | | | | | | | | | | | | | | | | | | | | | | | | | | | |
| EB - D&BI Tunnel - CP33 48m (37 blasts) | 47 | 11-Apr-22 A | 20-Jun-22 A | EB - D&BI Tunnel - CP33 48m (37 blasts) | | | | | | | | | | | | | | | | | | | | | | | | | | | | | | | |
| EB - D&Br Tunnel - CP33 (5m plug) | 36 | 12-Dec-22 A | 14-Apr-23 | EB - D&Br Tunnel - CP33 (5m plug) | | | | | | | | | | | | | | | | | | | | | | | | | | | | | | | |
| CP33 - Exc. for Drainage | 18 | 15-Apr-23 | 06-May-23 | CP33 - Exc. for Drainage | | | | | | | | | | | | | | | | | | | | | | | | | | | | | | | |
| CP33 - Base slab / Kicker | 12 | 08-May-23 | 20-May-23 | CP33 - Base slab / Kicker | | | | | | | | | | | | | | | | | | | | | | | | | | | | | | | |
| CP33 - Junction Structure | 52 | 22-May-23 | 24-Jul-23 | CP33 - Junction Structure | | | | | | | | | | | | | | | | | | | | | | | | | | | | | | | |
| EAST VENTILATION BUILDING [EVB] | 770 | 05-Mar-22 A | 08-Nov-24 | | | | | | | | | | | | | | | | | | | | | | | | | | | | | | | | |
| Excavation | 143 | 05-Mar-22 A | 20-Aug-22 A | | | | | | | | | | | | | | | | | | | | | | | | | | | | | | | | |
| Eastbound | 143 | 05-Mar-22 A | 20-Aug-22 A | | | | | | | | | | | | | | | | | | | | | | | | | | | | | | | | |
| Eastbound Excavation | 143 | 05-Mar-22 A | 20-Aug-22 A | Eastbound Excavation | | | | | | | | | | | | | | | | | | | | | | | | | | | | | | | |
| Foundation / Portal Structure | 363 | 21-Apr-22 A | 05-Aug-23 | | | | | | | | | | | | | | | | | | | | | | | | | | | | | | | | |
| Westbound | 363 | 21-Apr-22 A | 05-Aug-23 | | | | | | | | | | | | | | | | | | | | | | | | | | | | | | | | |
| EVB - WB Drainage & Blinding | 18 | 21-Apr-22 A | 19-Jul-22 A | EVB - WB Drainage & Blinding | | | | | | | | | | | | | | | | | | | | | | | | | | | | | | | |
| EVB - WB Foundation & SG Level Walls & Slab | 91 | 20-Jul-22 A | 27-Mar-23 | EVB - WB Foundation & SG Level Walls & Slab | | | | | | | | | | | | | | | | | | | | | | | | | | | | | | | |
| EVB - WB Tunnel & Plenum Level Wall & Column | 48 | 28-Mar-23 | 29-May-23 | EVB - WB Tunnel & Plenum Level Wall & Column | | | | | | | | | | | | | | | | | | | | | | | | | | | | | | | |
| EVB - WB Tunnel & Plenum Level Beam & Slab | 36 | 11-May-23 | 23-Jun-23 | EVB - WB Tunnel & Plenum Level Beam & Slab | | | | | | | | | | | | | | | | | | | | | | | | | | | | | | | |
| EVB - WB Tunnel Mezzanine Level Wall & Column | 36 | 24-Jun-23 | 05-Aug-23 | EVB - WB Tunnel Mezzanine Level Wall & Column | | | | | | | | | | | | | | | | | | | | | | | | | | | | | | | |
| Eastbound | 208 | 22-Aug-22 A | 08-Jul-23 | | | | | | | | | | | | | | | | | | | | | | | | | | | | | | | | |
| Trench Excavation | 18 | 22-Aug-22 A | 30-Sep-22 A | Trench Excavation | | | | | | | | | | | | | | | | | | | | | | | | | | | | | | | |
| EVB - EB Earth Mat Installation | 12 | 03-Oct-22 A | 08-Oct-22 A | EVB - EB Earth Mat Installation | | | | | | | | | | | | | | | | | | | | | | | | | | | | | | | |
| EVB - EB Drainage & Blinding | 18 | 10-Oct-22 A | 22-Oct-22 A | EVB - EB Drainage & Blinding | | | | | | | | | | | | | | | | | | | | | | | | | | | | | | | |
| EVB - EB Foundation & SG Level Walls & Slab | 60 | 24-Oct-22 A | 20-Feb-23 A | EVB - EB Foundation & SG Level Walls & Slab | | | | | | | | | | | | | | | | | | | | | | | | | | | | | | | |
| EVB - EB Tunnel & Plenum Level Wall & Column | 48 | 28-Feb-23 | 28-Apr-23 | EVB - EB Tunnel & Plenum Level Wall & Column | | | | | | | | | | | | | | | | | | | | | | | | | | | | | | | |
| EVB - EB Tunnel & Plenum Level Beam & Slab | 36 | 12-Apr-23 | 24-May-23 | EVB - EB Tunnel & Plenum Level Beam & Slab | | | | | | | | | | | | | | | | | | | | | | | | | | | | | | | |
| EVB - EB Tunnel Mezzanine Level Wall & Column | 36 | 25-May-23 | 08-Jul-23 | EVB - EB Tunnel Mezzanine Level Wall & Column | | | | | | | | | | | | | | | | | | | | | | | | | | | | | | | |
| T & C / FSI | 0 | 08-Nov-24 | 08-Nov-24 | | | | | | | | | | | | | | | | | | | | | | | | | | | | | | | | |
| EVB - FSI Forms submission to FSD | 0 | 08-Nov-24 | 08-Nov-24 | EVB - FSI Forms submission to FSD | | | | | | | | | | | | | | | | | | | | | | | | | | | | | | | |
| TUNNEL E&M INSTALLATION & COMMISSIONING | 86 | 28-Feb-23 | 14-Jun-23 | | | | | | | | | | | | | | | | | | | | | | | | | | | | | | | | |
| TKO-LTT Admin Building | 86 | 28-Feb-23 | 14-Jun-23 | | | | | | | | | | | | | | | | | | | | | | | | | | | | | | | | |
| Material Delivery | 6 | 28-Feb-23* | 06-Mar-23 | Material Delivery | | | | | | | | | | | | | | | | | | | | | | | | | | | | | | | |
| Cable Trunking and Tray Installation | 36 | 07-Mar-23 | 21-Apr-23 | Cable Trunking and Tray Installation | | | | | | | | | | | | | | | | | | | | | | | | | | | | | | | |

- ◆ Milestone
- Planned Bar
- Critical Activity
- ◆ Actual Milestone
- Actual Work

ED/2018/04 Trunk Road T2 and Infrastructure Works for Developments at South Apron

Three Months Rolling Programme (Feb-23)



| Date | Revision | Checked | Approved |
|-----------|----------|---------|----------|
| 18-Dec-19 | 00V1 | WYu | |
| 22-Feb-20 | 01V0 | SPa/LLo | WYu |
| 09-Apr-20 | 01V1 | SPa/LLo | WYu |
| 17-Jul-20 | 01V2 | SPa/LLo | WYu |
| 09-Oct-20 | 01V3 | SPa/LLo | WYu |
| 02-Jul-21 | 02V0 | SPa/LLo | WYu |

