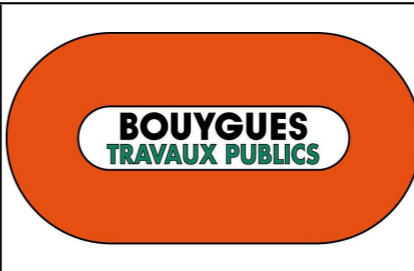


#	Activity Name	Dur	Start	Finish	2023												2024															
					December				January				February				March				April				May							
					03	10	17	24	31	07	14	21	28	04	11	18	25	03	10	17	24	31	07	14	21	28	05	12	19	26		
1	ED/2018/04 TRUNK ROAD T2	294	19-Sep-23	14-Sep-24																												
2	SUPPORTING UNDERGROUND STRUCTURE [SUS]	45	07-Nov-23	30-Dec-23																												
3	Tunnel Internal Structure & Finishing	45	07-Nov-23	30-Dec-23																												
4	Eastbound	45	07-Nov-23	30-Dec-23																												
5	SUS - EB Partition Wall CH6225-6237	45	07-Nov-23	30-Dec-23	SUS - EB Partition Wall CH6225-6237																											
6	SUS Fire Board Installation	103	20-Nov-23	25-Mar-24																												
7	Westbound	76	15-Dec-23	19-Mar-24																												
8	Crown	16	18-Dec-23	08-Jan-24																												
9	NCPS	16	18-Dec-23	08-Jan-24																												
10	OHVD Crown @ 15m/d	16	18-Dec-23	08-Jan-24																												
11	Road Level	76	15-Dec-23	19-Mar-24																												
12	CPS	53	15-Dec-23	21-Feb-24																												
13	RL Wall @ 15m/d	23	15-Dec-23*	13-Jan-24																												
14	RL OHVD Soffit @ 10m/d	35	09-Jan-24	21-Feb-24																												
15	NCPS	53	15-Jan-24	19-Mar-24																												
16	RL OHVD Soffit @ 10m/d	35	15-Jan-24	27-Feb-24																												
17	RL Wall @ 15m/d	23	22-Feb-24	19-Mar-24																												
18	Eastbound	103	20-Nov-23	25-Mar-24																												
19	Crown	57	20-Nov-23	27-Jan-24																												
20	CPS	24	20-Nov-23	16-Dec-23																												
21	OHVD Crown @ 15m/d	24	20-Nov-23	16-Dec-23																												
22	NCPS	17	09-Jan-24	27-Jan-24																												
23	OHVD Crown @ 15m/d	17	09-Jan-24	27-Jan-24																												
24	Road Level	58	15-Jan-24	25-Mar-24																												
25	CPS	37	15-Jan-24	29-Feb-24																												
26	RL Wall @ 15m/d	23	15-Jan-24*	09-Feb-24																												
27	RL OHVD Soffit @ 10m/d	35	17-Jan-24	29-Feb-24																												
28	NCPS	46	29-Jan-24	25-Mar-24																												
29	RL Wall @ 15m/d	23	29-Jan-24	27-Feb-24																												
30	RL OHVD Soffit @ 10m/d	35	14-Feb-24	25-Mar-24																												
31	WEST VENTILATION BUILDING [WVB]	253	19-Sep-23	29-Jul-24																												
32	Building Structure	51	31-Oct-23	30-Dec-23																												
33	Superstructure	51	31-Oct-23	30-Dec-23																												
34	WVB - 1F to Roof	51	31-Oct-23	30-Dec-23	WVB - 1F to Roof																											
35	ABWF / E&M	253	19-Sep-23	29-Jul-24																												
36	ABWF	133	19-Sep-23	01-Mar-24																												
37	WVB - ABWF works GF	76	19-Sep-23	19-Dec-23																												
38	WVB - TCSS Room Access	0		19-Dec-23																												
39	WVB - ABWF works GF	33	20-Dec-23	30-Jan-24																												
40	WVB - ABWF works RF	24	31-Jan-24	01-Mar-24																												
41	E&M	250	21-Sep-23	27-Jul-24																												
42	WVB - E&M Installation B1	154	21-Sep-23	28-Mar-24	WVB - E&M Installation B1																											

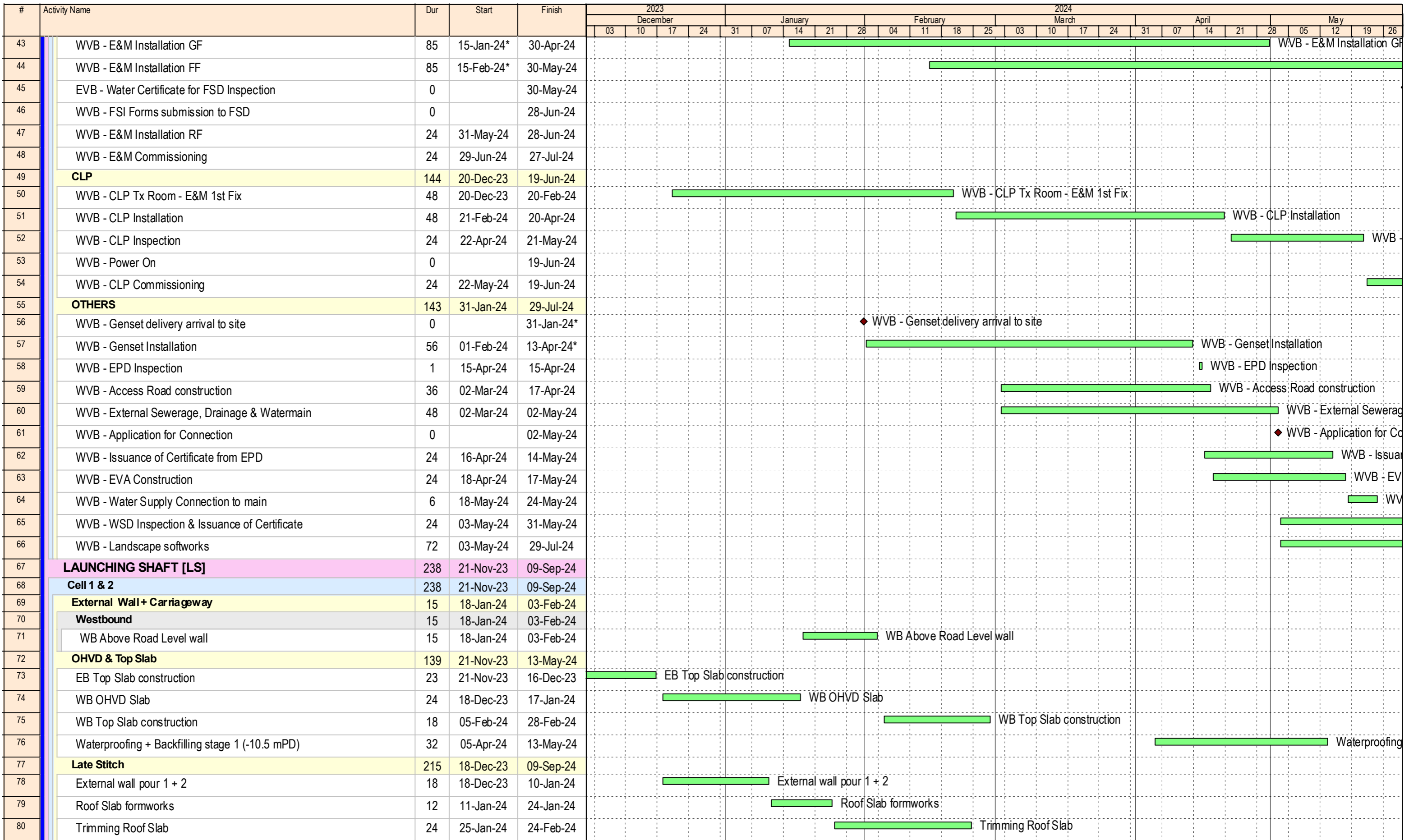
ED/2018/04 Trunk Road T2 and Infrastructure Works for Developments at South Apron

Three Months Rolling Programme (Jan-24)



Date	Revision	Checked	Approved
08-Nov-23	Rev. A	SPa	

Appendix A



- ◆ Milestone
- ▬ Planned Bar
- ▬ Critical Activity

ED/2018/04 Trunk Road T2 and Infrastructure Works
for Developments at South Apron
Three Months Rolling Programme (Jan-24)



Date	Revision	Checked	Approved
08-Nov-23	Rev. A	SPa	

#	Activity Name	Dur	Start	Finish	2023												2024											
					December				January				February				March				April				May			
					03	10	17	24	31	07	14	21	28	04	11	18	25	03	10	17	24	31	07	14	21	28	05	12
121	Eastbound	115	08-Feb-24	10-Jul-24																								
122	CP25 - EB - Tympanum Civil works CH8489	24	08-Feb-24	09-Mar-24																								
123	CP26 - EB - Tympanum Civil works CH8588	24	11-Apr-24	09-May-24																								
124	CP27 - EB - Tympanum Civil works CH8696	24	08-Jun-24	10-Jul-24																								
125	Westbound	28	06-May-24	13-Jun-24																								
126	CP25 - WB - Tympanum Civil works CH8499	28	06-May-24	13-Jun-24																								
127	Pipe Jacking	45	14-Jun-24	01-Aug-24																								
128	CP25 - Pipe Jacking	45	14-Jun-24	01-Aug-24																								
129	Finishing	156	07-Nov-23	20-May-24																								
130	CP14 - Finishing	36	07-Nov-23	18-Dec-23																								
131	CP15 - Finishing	36	21-Nov-23	04-Jan-24																								
132	CP16 - Finishing	36	05-Dec-23	18-Jan-24																								
133	CP17 - Finishing	36	19-Dec-23	01-Feb-24																								
134	CP18 - Finishing	36	05-Jan-24	19-Feb-24																								
135	CP19 - Finishing	36	19-Jan-24	04-Mar-24																								
136	CP20 - Finishing	36	02-Feb-24	18-Mar-24																								
137	CP21 - Finishing	36	20-Feb-24	05-Apr-24																								
138	CP22 - Finishing	36	05-Mar-24	19-Apr-24																								
139	CP23 - Finishing	36	19-Mar-24	04-May-24																								
140	CP24 - Finishing	36	06-Apr-24	20-May-24																								
141	CKL Civil Works	249	14-Nov-23	14-Sep-24																								
142	Eastbound	249	14-Nov-23	14-Sep-24																								
143	EB Type A1 Wall RC Structures (4 bays @ 5d/bay) 1 Fwk	40	11-Dec-23	29-Jan-24																								
144	Type A2	90	11-Dec-23	03-Apr-24																								
145	EB Type A2 Crown (4 bays, 6d/bay)	36	11-Dec-23	24-Jan-24																								
146	EB Type A2 Formworks dismantling	12	25-Jan-24	07-Feb-24																								
147	EB D&Br Dismantling Cavern excv + overbreak	36	19-Feb-24	03-Apr-24																								
148	Type A1	78	25-Jan-24	03-May-24																								
149	EB Type A1 Crown (9 bays, 6d/bay)	54	25-Jan-24	03-Apr-24																								
150	EB Type A1 to C1-C2 fwks adjustment	24	05-Apr-24	03-May-24																								
151	Type A	88	14-Nov-23	01-Mar-24																								
152	OHVD	88	14-Nov-23	01-Mar-24																								
153	EB Type A OHVD Slab	64	14-Nov-23	30-Jan-24																								
154	EB Type A OHVD Slab fwk dismantling	24	31-Jan-24	01-Mar-24																								
155	Type C	112	04-May-24	14-Sep-24																								
156	EB Type C1 & C2 Crown (14 bays @ 6m, 8d/bay)	112	04-May-24	14-Sep-24																								
157	Westbound	93	04-Dec-23	27-Mar-24																								
158	Type A2	56	09-Dec-23	19-Feb-24																								
159	WB Type A2 Wall Formwork dismantling	12	09-Dec-23	22-Dec-23																								



#	Activity Name	Dur	Start	Finish	2023												2024																															
					December				January				February				March				April				May																							
					03	10	17	24	31	07	14	21	28	04	11	18	25	03	10	17	24	31	07	14	21	28	05	12	19	26																		
160	WB Type A2 Crown (4 bays @ 4d/bay)	16	15-Jan-24*	01-Feb-24																																												
161	WB Type A2 Crown Fwks dismantling	12	02-Feb-24	19-Feb-24																																												
162	Type A1	93	04-Dec-23	27-Mar-24																																												
163	WB Type A1 OHVD Fwk assembly	24	04-Dec-23	03-Jan-24																																												
164	WB Type A1 OHVD Slab	45	04-Jan-24	28-Feb-24																																												
165	WB Type A1 OHVD Slab fwk dismantling	24	29-Feb-24	27-Mar-24																																												
166	EAST VENTILATION BUILDING [EVB]	221	31-Oct-23	30-Jul-24																																												
167	Overall	209	31-Oct-23	16-Jul-24																																												
168	Mezzanine Wall	59	31-Oct-23	10-Jan-24																																												
169	Ground Floor Slab	60	11-Jan-24	23-Mar-24																																												
170	Ground Floor Wall	21	25-Mar-24	22-Apr-24																																												
171	Upper Plenum Slab	24	12-Apr-24	10-May-24																																												
172	OHVD Slab construction	36	11-May-24	24-Jun-24																																												
173	Upper Plenum Wall	18	25-Jun-24	16-Jul-24																																												
174	ABWF	137	15-Jan-24	04-Jul-24																																												
175	B1	53	15-Jan-24	19-Mar-24																																												
176	Plastering	23	15-Jan-24*	09-Feb-24																																												
177	Floor Screading & Waterproofing	12	14-Feb-24	27-Feb-24																																												
178	Overall Painting works	30	14-Feb-24	19-Mar-24																																												
179	Floor, Wall Tiles installation	18	28-Feb-24	19-Mar-24																																												
180	LG	72	14-Feb-24	13-May-24																																												
181	Plastering	36	14-Feb-24	26-Mar-24																																												
182	Floor Screading & Waterproofing	12	27-Mar-24	13-Apr-24																																												
183	Floor, Wall Tiles installation	18	15-Apr-24	06-May-24																																												
184	Overall Painting works	36	27-Mar-24	13-May-24																																												
185	PL	72	27-Mar-24	26-Jun-24																																												
186	Plastering	36	27-Mar-24	13-May-24																																												
187	Floor Screading & Waterproofing	12	14-May-24	28-May-24																																												
188	Overall Painting works	30	14-May-24	19-Jun-24																																												
189	Floor, Wall Tiles installation	24	29-May-24	26-Jun-24																																												
190	MF	42	14-May-24	04-Jul-24																																												
191	Plastering	42	14-May-24	04-Jul-24																																												
192	E&M	131	15-Feb-24	25-Jul-24																																												
193	EVB - E&M Installation SG Level	60	15-Feb-24	29-Apr-24																																												
194	EVB - E&M Installation Tunnel & Plenum Level	60	14-May-24	25-Jul-24																																												
195	Footbridge - FB-03	120	04-Mar-24	30-Jul-24																																												
196	FT-03 - Bearing Manufacturing	72	04-Mar-24	01-Jun-24																																												
197	FT-03 - Installation of Structural Frames	30	11-May-24	17-Jun-24																																												
198	FT-03 - Bearing Testing	12	03-Jun-24	17-Jun-24																																												

- ◆ Milestone
- ▬ Planned Bar
- ▬ Critical Activity

ED/2018/04 Trunk Road T2 and Infrastructure Works for Developments at South Apron Three Months Rolling Programme (Jan-24)



Date	Revision	Checked	Approved
08-Nov-23	Rev. A	SPa	

#	Activity Name	Dur	Start	Finish	2023												2024											
					December				January				February				March				April				May			
					03	10	17	24	31	07	14	21	28	04	11	18	25	03	10	17	24	31	07	14	21	28	05	12
199	FT-03 - Bridge Deck Construction + Bearing Installation	36	18-Jun-24	30-Jul-24																								
200	E&M INSTALLATION	144	20-Mar-24	12-Sep-24																								
201	E&M Bracket	24	20-Mar-24*	20-Apr-24																								
202	Road Level E&M Installation	120	22-Apr-24	12-Sep-24																								
203	E&M / FSI / Project Handover	202	01-Dec-23	08-Aug-24																								
204	E&M	202	01-Dec-23	08-Aug-24																								
205	Westbound	169	01-Dec-23	29-Jun-24																								
206	CPS	169	01-Dec-23	29-Jun-24																								
207	1st 500m	121	01-Dec-23	02-May-24																								
208	E&M Bracket	49	01-Dec-23*	30-Jan-24																								
209	Road Level E&M Installation	72	31-Jan-24	02-May-24																								
210	2nd 500m	96	31-Jan-24	31-May-24																								
211	E&M Bracket	24	31-Jan-24	01-Mar-24																								
212	Road Level E&M Installation	72	02-Mar-24	31-May-24																								
213	3rd 500m	96	02-Mar-24	29-Jun-24																								
214	E&M Bracket	24	02-Mar-24	02-Apr-24																								
215	Road Level E&M Installation	72	03-Apr-24	29-Jun-24																								
216	Eastbound	154	30-Jan-24	08-Aug-24																								
217	CPS	154	30-Jan-24	08-Aug-24																								
218	1st 500m	106	30-Jan-24	12-Jun-24																								
219	E&M Bracket	34	30-Jan-24*	12-Mar-24																								
220	Road Level E&M Installation	72	13-Mar-24	12-Jun-24																								
221	2nd 500m	96	13-Mar-24	11-Jul-24																								
222	E&M Bracket	24	13-Mar-24	13-Apr-24																								
223	Road Level E&M Installation	72	15-Apr-24	11-Jul-24																								
224	3rd 500m	96	15-Apr-24	08-Aug-24																								
225	E&M Bracket	24	15-Apr-24	13-May-24																								
226	Road Level E&M Installation	72	14-May-24	08-Aug-24																								

- ◆ Milestone
- ▬ Planned Bar
- ▬ Critical Activity

**ED/2018/04 Trunk Road T2 and Infrastructure Works
 for Developments at South Apron**
Three Months Rolling Programme (Jan-24)



Date	Revision	Checked	Approved
08-Nov-23	Rev. A	SPa	