

Environmental Permit No.: EP-451/2013
Environmental Team for Trunk Road T2

Appendix M – Summary of Exceedance

Reporting Month: October 2022

(A) Exceedance Report for Air Quality

Four (4) Action Level and Two (2) Limit Level exceedance of 24hr TSP monitoring was recorded in this reporting month.

Monitoring Station	Start Date	Conc. ($\mu\text{g}/\text{m}^3$)	Level exceeded
CKL2	17 October 2022	206.1	Action Level
KER1	17 October 2022	<u>401.2</u>	Limit Level
KTD2d	17 October 2022	<u>296.5</u>	Limit Level
KER1	22 October 2022	198.5	Action Level
KTD2d	22 October 2022	160.8	Action Level
CKL1	27 October 2022	204.9	Action Level

(B) Exceedance Report for Construction Noise

Action Level for Construction Noise

No Action Level exceedance was recorded due to the documented complaint received in this reporting month.

Limit Level for Construction Noise

No exceedance for daytime construction noise monitoring was recorded in the reporting month.

(C) Summary of Landscape and Visual Non-Conformity
(NIL in the reporting month)

Environmental Permit No.: EP-451/2013
Environmental Team for Trunk Road T2

- Notification of Exceedances

NOE No. 221017_24hrTSP (CKL2) **Exceedance Level:** Action

Date of Air Quality Monitoring: 17 October 2022

Part A – Exceedance Summary Tables

Table I: Parameter(s) – 24-hour TSP

Station	Location	Starting Time	Weather Condition	Conc. (µg/m ³)	Action Level (µg/m ³)	Limit Level (µg/m ³)	Level exceeded
CKL2	Flat 103 Cha Kwo Ling Village	09:00	Fine	<i>206.1</i>	183.0	260.0	Action

Note: ***Bold Italic*** means Action Level exceedance
Bold Italic with underline means Limit Level exceedance

Part B – Major Source of Parameter Monitored

Field Observation(s) and Finding(s)

<p>(a) Statement of exceedance(s)</p> <p>24-hour TSP monitoring measured at CKL2 on 17 October 2022 exceeded the action level.</p>
<p>(b) Cause of exceedance(s)</p> <p>According to the observation of our field staff and the information provided by ER and Contractor, the major dust source(s) and/or reason(s) for exceedance identified at CKL1 is/are as follow:</p> <ol style="list-style-type: none"> 1. No major project related construction activity was observed during monitoring at CKL2. However, it observed that construction work of DSD was being conducted along the Cha Kwo Ling Road. (See Photo 1) 2. Fluctuation of road traffic along the Cha Kwo Ling Road. (Photo 2)

Environmental Permit No.: EP-451/2013
Environmental Team for Trunk Road T2

- Notification of Exceedances



Photo 1



Photo 2

Environmental Permit No.: EP-451/2013

Environmental Team for Trunk Road T2

- Notification of Exceedances

Part C – Conclusion

Based on the finding(s) and observation(s) above, we deduce the Action Level exceedance of 24-hour TSP recorded at station CKL2 on 17 October 2022 is due to fluctuation of road traffic and the construction activity from DSD, therefore, the exceedance is considered as **non-project related**.

Part D – Recommendation

Although the exceedance is considered as non-project related, contractor is reminded that the following construction dust mitigation measures shall always to be implemented on site to reduce/ minimize the generation of dust due to the construction activities.

1. Watering of the construction areas 12 times per day to reduce dust emissions.
2. Side enclosure and covering of any aggregate or dusty material storage piles to reduce emissions.
3. Open stockpiles shall be avoided or covered.
4. Tarpaulin covering of all dusty vehicle loads transported to, from and between site locations.
5. Establishment and use of vehicle wheel and body washing facilities at the exit points of the site.
6. Imposition of speed controls for vehicles on unpaved site roads, 8 km per hour is the recommended limit.
7. Use of regular watering to reduce dust emissions from exposed site surfaces and unpaved roads, particularly during dry weather.

Part E – Follow-up Action Taken

According to the Event and Action Plan of the EM&A Manual of Trunk Road T2 project under EP-451/2013, the follow-up action of this exceedance is/are taken by ET as follow:

1. Informed the investigation result to other parties (i.e., IEC and ER).
2. ET will always pay attention to the implementation of mitigation measures by Contractor and advise the ER on the effectiveness of such measures.

Environmental Permit No.: EP-451/2013
Environmental Team for Trunk Road T2

- Notification of Exceedances

NOE No. 221017_24hrTSP (KER1) Exceedance Level: Limit

Date of Air Quality Monitoring: 17 October 2022

Part A – Exceedance Summary Tables

Table I: Parameter(s) – 24-hour TSP

Station	Location	Starting Time	Weather Condition	Conc. (µg/m ³)	Action Level (µg/m ³)	Limit Level (µg/m ³)	Level exceeded
KER1	Future Residential Development at Kerry Godown	09:00	Cloudy	<u>401.2</u>	172.0	260.0	Limit

Note: ***Bold Italic*** means Action Level exceedance
Bold Italic with underline means Limit Level exceedance

Part B – Major Source of Parameter Monitored

Field Observation(s) and Finding(s)

<p>(a) Statement of exceedance(s) 24-hour TSP monitoring measured at KER1 on 17 October 2022 exceeded the Limit level.</p>
<p>(b) Cause of exceedance(s) According to the observation of our field staff, the major dust source(s) and/or reason(s) for exceedance identified at KER1 is/are as follow:</p> <ol style="list-style-type: none"> 1. Observable dust sources, such as wind erosion, loading and unloading of material, and vehicle movement on site, were identified. (See Photo 1) 2. Dust reduction measure, i.e. Wheel washing facility was observed and operated normally. (See Photo 2). However, sand and tiny gravel were observed at the site entrance. (See Photo 3)

Environmental Permit No.: EP-451/2013
Environmental Team for Trunk Road T2

- Notification of Exceedances

Photo Record (Photo Taken by ET)



Photo 1



Photo 2



Photo 3

Environmental Permit No.: EP-451/2013

Environmental Team for Trunk Road T2

- Notification of Exceedances

Part C – Conclusion

Based on the finding(s) and observation(s) above, we deduce the Limit Level exceedance of 24-hour TSP recorded at station KER1 on 17 October 2022 is due to the insufficient dust reduction measure was carried out to reduce emissions (i.e watering in the site entrance). Therefore, the exceedance is considered as **project related**.

Part D – Recommendation

The following construction dust mitigation measures shall always to be implemented on site to reduce/ minimize the generation of dust due to the construction activities.

1. Watering of the construction areas 12 times per day to reduce dust emissions.
2. Side enclosure and covering of any aggregate or dusty material storage piles to reduce emissions.
3. Open stockpiles shall be avoided or covered.
4. Tarpaulin covering of all dusty vehicle loads transported to, from and between site locations
5. Establishment and use of vehicle wheel and body washing facilities at the exit points of the site.
6. Imposition of speed controls for vehicles on unpaved site roads, 8 km per hour is the recommended limit
- 7.

Part E – Follow-up Action Taken

According to the Event and Action Plan of the EM&A Manual of Trunk Road T2 project under EP-451/2013, the follow-up action of this exceedance is/are taken by ET as follow:

1. An addition air quality monitoring has been carried out on 31 October 2022, and no action and limit level exceedance was recorded. The monitoring results is tabulated as below:

Start Date	Weather Condition	Air Temp . (K)	Atmospheric Pressure, Pa (mmHg)	Filter Weight (g)		Particulate weight (g)	Elapse Time		Sampling Time (hrs.)	Flow Rate (m3/min.)		Av. Flow (m3/min)	Total vol. (m3)	Conc. (µg/m3)	Action Level (µg/m3)	Limit Level (µg/m3)
				Initial	Final		Initial	Final		Initial	Final					
31-Oct-22	Rainy	296.7	757.3	3.2764	3.7166	0.4402	14207	14231	24	1.22	1.23	1.23	1764.5	249.5	172	260

2. The remedial measures proposed by the contractor was reviewed during site audit and ET has no adverse comments on the proposed remedial measures. The photo records provided by contractor are shown as below:

Environmental Permit No.: EP-451/2013
Environmental Team for Trunk Road T2

- Notification of Exceedances

Photo Record (Provided by Contractor)



Photo 4 – Wheel Washing Facilities



Photo 5 – Wheel Washing Facilities



Photo 6 – Watering on the main haul road

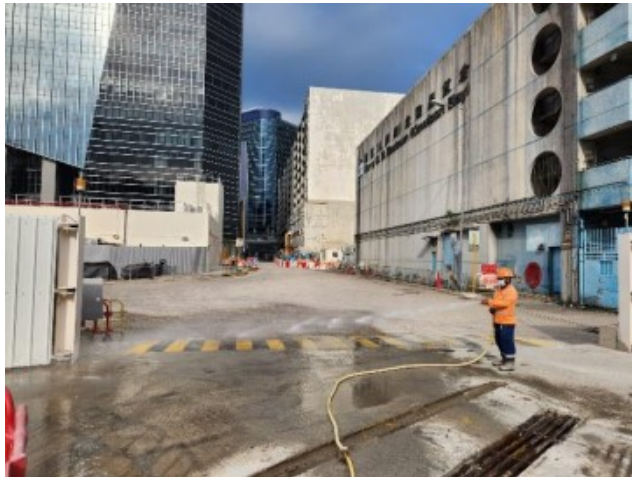


Photo 7 – Watering at the site entrance



Photo 8 – Watering on the main haul road

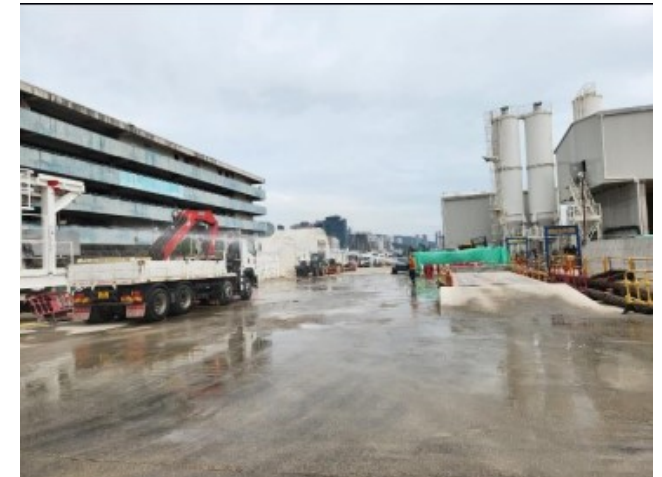


Photo 10 – Watering on the main haul road

Environmental Permit No.: EP-451/2013
Environmental Team for Trunk Road T2

- Notification of Exceedances

NOE No. 221017_24hrTSP (KTD2d) Exceedance Level: **Limit**

Date of Air Quality Monitoring: 17 October 2022

Part A – Exceedance Summary Tables

Table I: Parameter(s) – 24-hour TSP

Station	Location	Starting Time	Weather Condition	Conc. (µg/m ³)	Action Level (µg/m ³)	Limit Level (µg/m ³)	Level exceeded
KTD2d	Next to the SOR Office of Trunk Road T2 in Kai Tak Area	09:00	Cloudy	<i>296.5</i>	157.0	260.0	Limit

Note: ***Bold Italic*** means Action Level exceedance
Bold Italic with underline means Limit Level exceedance

Part B – Major Source of Parameter Monitored

Field Observation(s) and Finding(s)

<p>(a) Statement of exceedance(s) 24-hour TSP monitoring measured at KTD2d on 17 October 2022 exceeded the Limit level.</p>
<p>(b) Cause of exceedance(s) According to the observation of our field staff, the major dust source(s) and/or reason(s) for exceedance identified at KTD2d is/are as follow:</p> <ol style="list-style-type: none"> It observed that a stockpile of excavated dusty material with impervious sheet was not covered thoroughly from the construction site which does not belong to BTP. (See Photo 1&2)

Environmental Permit No.: EP-451/2013
Environmental Team for Trunk Road T2

- Notification of Exceedances

Photo Record (Photo Taken by ET)



Photo 1



Photo 2

Environmental Permit No.: EP-451/2013

Environmental Team for Trunk Road T2

- Notification of Exceedances

Part C – Conclusion

Based on the finding(s) and observation(s) above, we deduce the Limit Level exceedance of 24-hour TSP recorded at station KTD2d on 17 October 2022 is due to the construction activities which does not belong to BTP Therefore, the exceedance is considered as **non-project related**.

Part D – Recommendation

The following construction dust mitigation measures shall always to be implemented on site to reduce/ minimize the generation of dust due to the construction activities.

1. Watering of the construction areas 12 times per day to reduce dust emissions.
2. Side enclosure and covering of any aggregate or dusty material storage piles to reduce emissions.
3. Open stockpiles shall be avoided or covered.
4. Tarpaulin covering of all dusty vehicle loads transported to, from and between site locations
5. Establishment and use of vehicle wheel and body washing facilities at the exit points of the site.
6. Imposition of speed controls for vehicles on unpaved site roads, 8 km per hour is the recommended limit

Part E – Follow-up Action Taken

According to the Event and Action Plan of the EM&A Manual of Trunk Road T2 project under EP-451/2013, the follow-up action of this exceedance is/are taken by ET as follow:

1. Informed the investigation result to other parties (i.e., IEC and ER).
2. ET will always pay attention to the implementation of mitigation measures by Contractor and advise the ER on the effectiveness of such measures.

Environmental Permit No.: EP-451/2013
Environmental Team for Trunk Road T2

- Notification of Exceedances

NOE No. 221022_24hrTSP (KER1) **Exceedance Level: Action**

Date of Air Quality Monitoring: 22 October 2022

Part A – Exceedance Summary Tables

Table I: Parameter(s) – 24-hour TSP

Station	Location	Starting Time	Weather Condition	Conc. (µg/m ³)	Action Level (µg/m ³)	Limit Level (µg/m ³)	Level exceeded
KER1	Future Residential Development at Kerry Godown	09:00	Sunny	<i>198.5</i>	172.0	260.0	Action

Note: ***Bold Italic*** means Action Level exceedance
Bold Italic with underline means Limit Level exceedance

Part B – Major Source of Parameter Monitored

Field Observation(s) and Finding(s)

<p>(a) Statement of exceedance(s) 24-hour TSP monitoring measured at KER1 on 22 October 2022 exceeded the Action level.</p>
<p>(b) Cause of exceedance(s) According to the observation of our field staff and the site audit on 3 November 2022, the major dust source(s) and/or reason(s) for exceedance identified at KER1 is/are as follow:</p> <ol style="list-style-type: none"> 1. The open stockpiles were not covered with impervious materials which closed with the HVS. (See Photo 1) 2. Dry weather 3. Observable dust sources, such as wind erosion, loading and unloading of material, and vehicle movement on site, were identified. (See Photo 2)

Environmental Permit No.: EP-451/2013
Environmental Team for Trunk Road T2

- Notification of Exceedances

Photo Record (Photo Taken by ET)



Photo 1



Photo 2

Environmental Permit No.: EP-451/2013
Environmental Team for Trunk Road T2

- Notification of Exceedances

Part C – Conclusion

Based on the finding(s) and observation(s) above, we deduce the Action Level exceedance of 24-hour TSP recorded at station KER1 on 22 October 2022 is due to the uncovered stockpiles which was very close to the HVS. Therefore, the exceedance is considered as **project related**.

Part D – Recommendation

The following construction dust mitigation measures shall always to be implemented on site to reduce/ minimize the generation of dust due to the construction activities.

1. Watering of the construction areas 12 times per day to reduce dust emissions.
2. Side enclosure and covering of any aggregate or dusty material storage piles to reduce emissions.
3. Open stockpiles shall be avoided or covered.
4. Tarpaulin covering of all dusty vehicle loads transported to, from and between site locations
5. Establishment and use of vehicle wheel and body washing facilities at the exit points of the site.
6. Imposition of speed controls for vehicles on unpaved site roads, 8 km per hour is the recommended limit

Part E – Follow-up Action Taken

According to the Event and Action Plan of the EM&A Manual of Trunk Road T2 project under EP-451/2013, the follow-up action of this exceedance is/are taken by ET as follow:

1. An addition air quality monitoring at KER1 has been carried out on 31 October 2022, and the One (1) action exceedance was recorded. The monitoring results is tabulated as below:

Start Date	Weather Condition	Air Temp . (K)	Atmospheric Pressure, Pa (mmHg)	Filter Weight (g)		Particulate weight (g)	Elapse Time		Sampling Time (hrs.)	Flow Rate (m3/min.)		Av. Flow (m3/min)	Total vol. (m3)	Conc. (µg/m3)	Action Level (µg/m3)	Limit Level (µg/m3)
				Initial	Final		Initial	Final		Initial	Final					
31-Oct-22	Rainy	296.7	757.3	3.2764	3.7166	0.4402	14207	14231	24	1.22	1.23	1.23	1764.5	249.5	172	260

2. The addition air quality monitoring at KER1 will be adopted until there are no action / limit level exceedance of 24-hour TSP.

Environmental Permit No.: EP-451/2013
Environmental Team for Trunk Road T2

- Notification of Exceedances

NOE No. 221022_24hrTSP (KTD2d) **Exceedance Level: Action**

Date of Air Quality Monitoring: 22 October 2022

Part A – Exceedance Summary Tables

Table I: Parameter(s) – 24-hour TSP

Station	Location	Starting Time	Weather Condition	Conc. (µg/m ³)	Action Level (µg/m ³)	Limit Level (µg/m ³)	Level exceeded
KTD2d	Next to the SOR Office of Trunk Road T2 in Kai Tak Area	09:00	Sunny	<i>160.8</i>	157.0	260.0	Action

Note: ***Bold Italic*** means Action Level exceedance
 Bold Italic with underline means Limit Level exceedance

Part B – Major Source of Parameter Monitored

Field Observation(s) and Finding(s)

<p>(a) Statement of exceedance(s) 24-hour TSP monitoring measured at KTD2d on 22 October 2022 exceeded the Action level.</p>
<p>(b) Cause of exceedance(s) According to the observation of our field staff and the site audit on 3 November 2022, the major dust source(s) and/or reason(s) for exceedance identified at KER1 is/are as follow:</p> <ol style="list-style-type: none"> 1. It observed that a stockpile of excavated dusty material with impervious sheet was not covered thoroughly from the construction site which did not belong to BTP. (See Photo 1) 2. Dry weather 3. The loading and unloading of material and vehicle movement were observed from the construction site which did not belong to BTP (See Photo 2)

Environmental Permit No.: EP-451/2013
Environmental Team for Trunk Road T2

- Notification of Exceedances

Photo Record (Photo Taken by ET)



Photo 1



Photo 2

Environmental Permit No.: EP-451/2013

Environmental Team for Trunk Road T2

- Notification of Exceedances

Part C – Conclusion

Based on the finding(s) and observation(s) above, we deduce the Action Level exceedance of 24-hour TSP recorded at station KTD2d on 22 October 2022 is due to the construction activities which does not belong to BTP Therefore, the exceedance is considered as **non-project related**.

Part D – Recommendation

The following construction dust mitigation measures shall always to be implemented on site to reduce/ minimize the generation of dust due to the construction activities.

1. Watering of the construction areas 12 times per day to reduce dust emissions.
2. Side enclosure and covering of any aggregate or dusty material storage piles to reduce emissions.
3. Open stockpiles shall be avoided or covered.
4. Tarpaulin covering of all dusty vehicle loads transported to, from and between site locations
5. Establishment and use of vehicle wheel and body washing facilities at the exit points of the site.
6. Imposition of speed controls for vehicles on unpaved site roads, 8 km per hour is the recommended limit

Part E – Follow-up Action Taken

According to the Event and Action Plan of the EM&A Manual of Trunk Road T2 project under EP-451/2013, the follow-up action of this exceedance is/are taken by ET as follow:

1. Informed the investigation result to other parties (i.e., IEC and ER).
2. ET will always pay attention to the implementation of mitigation measures by Contractor and advise the ER on the effectiveness of such measures.

Environmental Permit No.: EP-451/2013
Environmental Team for Trunk Road T2

- Notification of Exceedances

NOE No. 221027_24hrTSP (CKL1) **Exceedance Level:** Action

Date of Air Quality Monitoring: 27 October 2022

Part A – Exceedance Summary Tables

Table I: Parameter(s) – 24-hour TSP

Station	Location	Starting Time	Weather Condition	Conc. (µg/m ³)	Action Level (µg/m ³)	Limit Level (µg/m ³)	Level exceeded
CKL1	Flat 121 Cha Kwo Ling Village	09:00	Sunny	<i>204.9</i>	191.0	260.0	Action

Note: ***Bold Italic*** means Action Level exceedance
Bold Italic with underline means Limit Level exceedance

Part B – Major Source of Parameter Monitored

Field Observation(s) and Finding(s)

<p>(a) Statement of exceedance(s)</p> <p>24-hour TSP monitoring measured at CKL1 on 27 October 2022 exceeded the action level.</p>
<p>(b) Cause of exceedance(s)</p> <p>According to the observation of our field staff and the information provided by ER and Contractor, the major dust source(s) and/or reason(s) for exceedance identified at CKL1 is/are as follow:</p> <ol style="list-style-type: none"> 1. No major project related construction activity was observed during monitoring at CKL1. However, it observed that construction work of DSD was being conducted along the Cha Kwo Ling Road (See Photo 1-2). 2. Fluctuation of road traffic along the Cha Kwo Ling Road.

Environmental Permit No.: EP-451/2013
Environmental Team for Trunk Road T2

- Notification of Exceedances

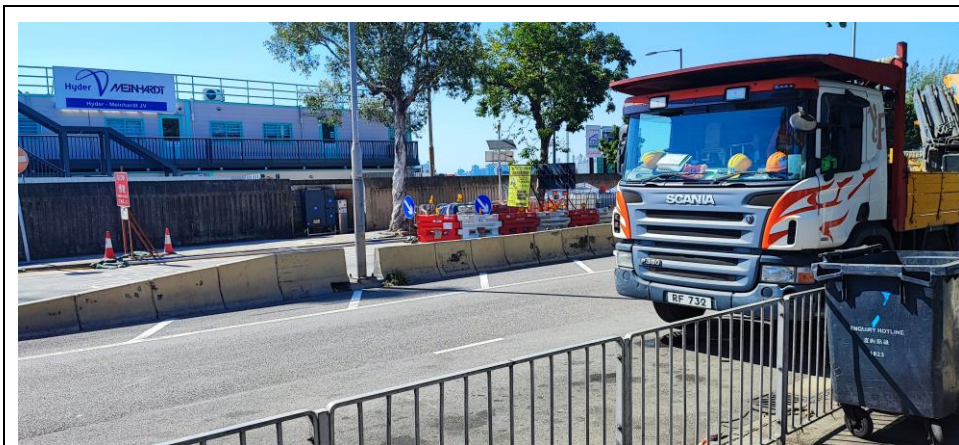


Photo 1



Photo 2

Part C – Conclusion

Based on the finding(s) and observation(s) above, we deduce the Action Level exceedance of 24-hour TSP recorded at station CKL1 on 27 October 2022 is due to fluctuation of road traffic and the construction activity from DSD, therefore, the exceedance is considered as **non-project related**.

Part D – Recommendation

Although the exceedance is considered as non-project related, contractor is reminded that the following construction dust mitigation measures shall always to be implemented on site to reduce/ minimize the generation of dust due to the construction activities.

1. Watering of the construction areas 12 times per day to reduce dust emissions.
2. Side enclosure and covering of any aggregate or dusty material storage piles to reduce emissions.
3. Open stockpiles shall be avoided or covered.
4. Tarpaulin covering of all dusty vehicle loads transported to, from and between site locations.
5. Establishment and use of vehicle wheel and body washing facilities at the exit points of the site.
6. Imposition of speed controls for vehicles on unpaved site roads, 8 km per hour is the recommended limit.
7. Use of regular watering to reduce dust emissions from exposed site surfaces and unpaved roads, particularly during dry weather.

Environmental Permit No.: EP-451/2013
Environmental Team for Trunk Road T2

- Notification of Exceedances

Part E – Follow-up Action Taken

According to the Event and Action Plan of the EM&A Manual of Trunk Road T2 project under EP-451/2013, the follow-up action of this exceedance is/are taken by ET as follow:

1. Informed the investigation result to other parties (i.e., IEC and ER).
2. ET will always pay attention to the implementation of mitigation measures by Contractor and advise the ER on the effectiveness of such measures.