

APPENDIX A

Three Months Rolling Programme Progress (App A)

Activity Name	Dur	Start	Finish	2023																																
				March	April	May	June	July	August	September	October																									
DDA - 2nd Sub	0		28-Dec-22 A																																	
DDA - 2nd Review by SO	35	29-Dec-22 A	03-Aug-23																																	
DDA - SO Consent for Construction	0		03-Aug-23																																	
DDA WVB - Aesthetic Design	641	14-May-21 A	01-Sep-23																																	
DDA - Review by IP / DC	28	14-May-21 A	05-Jun-23 A																																	
DDA - 2nd Review by SO	35	20-Jun-21 A	11-Jun-23 A																																	
DDA - 2nd Review by IP	35	20-Jun-21 A	11-Jun-23 A																																	
DDA - Further information required by SO	24	12-Jun-23 A	28-Jul-23																																	
DDA - 3rd Sub	0		28-Jul-23																																	
DDA - 3rd Review by SO	35	29-Jul-23	01-Sep-23																																	
DDA - SO Consent for Construction	0		01-Sep-23																																	
SOUTH APRON ROAD WORKS	426	16-Feb-22 A	18-Aug-23																																	
DDA - Kiosk	426	16-Feb-22 A	18-Aug-23																																	
DDA - Draft - Final Review and prepare for 1st Sub	14	16-Feb-22 A	18-Jan-23 A																																	
DDA - 1st Sub	0		18-Jan-23 A																																	
DDA - Review by SO	28	19-Jan-23 A	15-Feb-23 A																																	
DDA - Review by IP / DC	28	19-Jan-23 A	15-Feb-23 A																																	
DDA - Further information required by SO	12	16-Feb-23 A	14-Jul-23																																	
DDA - 2nd Sub	0		14-Jul-23																																	
DDA - 2nd Review by SO	35	15-Jul-23	18-Aug-23																																	
DDA - SO Consent for Construction	0		18-Aug-23																																	
[STE] DDA KHR Modification - Street Lighting	73	08-Sep-22 A	22-Dec-22 A																																	
DDA - 4th Review by SO	35	08-Sep-22 A	11-Oct-22 A																																	
DDA - Further information required by SO	12	12-Oct-22 A	26-Nov-22 A																																	
DDA - 5th Sub	0		26-Nov-22 A																																	
DDA - 5th Review by SO	35	27-Nov-22 A	22-Dec-22 A																																	
DDA - SO Consent for Construction	0		22-Dec-22 A																																	
[STE] DDA Road L10 (N) - Permanent Utility Design	34	16-Sep-22 A	12-Oct-22 A																																	
DDA - 6th Review by SO	35	16-Sep-22 A	12-Oct-22 A																																	
DDA - SO Consent for Construction	0		12-Oct-22 A																																	
C&C TUNNEL / LAUNCHING SHAFT [C&C / LS]	404	09-Jul-22 A	13-Oct-22 A																																	
DDA - C&C/LS Permanent Structure (C&C) (SG Scheme)	404	09-Jul-22 A	13-Oct-22 A																																	
DDA - Further information required by SO	24	09-Jul-22 A	30-Sep-22 A																																	
DDA - 6th Sub	0		30-Sep-22 A																																	
DDA - 6th Review by SO	35	01-Oct-22 A	13-Oct-22 A																																	
DDA - SO Consent for Construction	0		13-Oct-22 A																																	
Stage 2A Completion	0		13-Oct-22 A																																	
DDA - C&C/LS Permanent Structure (Cell 1 & 2) (SG Scheme)	404	09-Jul-22 A	13-Oct-22 A																																	
DDA - Further information required by SO	24	09-Jul-22 A	30-Sep-22 A																																	
DDA - 6th Sub	0		30-Sep-22 A																																	
DDA - 6th Review by SO	35	01-Oct-22 A	13-Oct-22 A																																	
DDA - SO Consent for Construction	0		13-Oct-22 A																																	
SUB-SEA TBM TUNNEL	108	03-Sep-22 A	20-Feb-23 A																																	
FER - Fire Engineering Report (SG Scheme)	108	03-Sep-22 A	20-Feb-23 A																																	
FER - Further information required by SO	24	03-Sep-22 A	11-Oct-22 A																																	
FER - 7th Sub	0		11-Oct-22 A																																	
FER - 7th Review by SO	35	12-Oct-22 A	20-Feb-23 A																																	
FER - SO Consent for Construction	0		20-Feb-23 A																																	
EAST VENTILATION BUILDING [EVb]	575	26-Oct-21 A	05-Oct-23																																	
DDA - EVB - ABWF	193	01-Aug-22 A	18-Jan-23 A																																	
DDA - Further information required by SO	120	01-Aug-22 A	21-Dec-22 A																																	
DDA - 2nd Sub	0		21-Dec-22 A																																	
DDA - 2nd Review by SO	28	22-Dec-22 A	18-Jan-23 A																																	

- Milestone
- Planned Bar
- Critical Activity
- Actual Milestone
- Actual Work

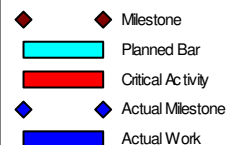
ED/2018/04 Trunk Road T2 and Infrastructure Works for Developments at South Apron

Three Months Rolling Programme (Jun-23)



Date	Revision	Checked	Approved
18-Dec-19	00V1	WYu	
22-Feb-20	01V0	SPa/LLo	WYu
09-Apr-20	01V1	SPa/LLo	WYu
17-Jul-20	01V2	SPa/LLo	WYu
09-Oct-20	01V3	SPa/LLo	WYu
02-Jul-21	02V0	SPa/LLo	WYu

Activity Name	Dur	Start	Finish	2023																															
				March				April				May				June				July				August				September				October			
				6	05	12	19	26	02	09	16	23	30	07	14	21	28	04	11	18	25	02	09	16	23	30	06	13	20	27	03	10	17	24	01
6.3.4 Complete Ground treatment for all Cross Passages 0.1	0		13-Jan-23 A	ross Passages 0.1																															
6.3.5 Complete Ground treatment for all Cross Passages 0.2	0		13-Jan-23 A	ross Passages 0.2																															
6.3.6 Complete Ground treatment for all Cross Passages 0.3	0		13-Feb-23 A	ete Ground treatment for all Cross Passages 0.3																															
6.3.14 Complete excavation and support of Cross Passages 0.1	0		13-Feb-23 A	lete excavation and support of Cross Passages 0.1																															
6.3.7 Complete Ground treatment for all Cross Passages 0.4	0		13-Mar-23 A	◆ 6.3.7 Complete Ground treatment for all Cross Passages 0.4																															
6.3.15 Complete excavation and support of Cross Passages 0.2	0		13-Mar-23 A	◆ 6.3.15 Complete excavation and support of Cross Passages 0.2																															
6.3.8 Complete Ground treatment for all Cross Passages 0.5	0		13-Apr-23 A	◆ 6.3.8 Complete Ground treatment for all Cross Passages 0.5																															
6.3.16 Complete excavation and support of Cross Passages 0.3	0		13-Apr-23 A	◆ 6.3.16 Complete excavation and support of Cross Passages 0.3																															
6.3.9 Complete Ground treatment for all Cross Passages 0.6	0		13-May-23 A	◆ 6.3.9 Complete Ground treatment for all Cross Passages 0.6																															
6.3.10 Complete Ground treatment for all Cross Passages 0.7	0		13-Jun-23 A	◆ 6.3.10 Complete Ground treatment for all Cross Passages 0.7																															
6.3.17 Complete excavation and support of Cross Passages 0.4	0		13-Jun-23 A	◆ 6.3.17 Complete excavation and support of Cross Passages 0.4																															
6.3.18 Complete excavation and support of Cross Passages 0.5	0		30-Jun-23	◆ 6.3.18 Complete excavation and support of Cross Passages 0.5																															
6.3.19 Complete excavation and support of Cross Passages 0.6	0		30-Jun-23	◆ 6.3.19 Complete excavation and support of Cross Passages 0.6																															
6.3.20 Complete excavation and support of Cross Passages 0.7	0		21-Jul-23	◆ 6.3.20 Complete excavation and support of Cross Passages 0.7																															
6.3.11 Complete Ground treatment for all Cross Passages 0.8	0		12-Aug-23	◆ 6.3.11 Complete Ground treatment for all Cross Passages 0.8																															
6.3.21 Complete excavation and support of Cross Passages 0.8	0		24-Aug-23	◆ 6.3.21 Complete excavation and support of Cross Passages 0.8																															
6.3.24 Complete structural works of Cross Passages 0.1	0		25-Aug-23	◆ 6.3.24 Complete structural works of Cross Passages 0.1																															
6.3.25 Complete structural works of Cross Passages 0.2	0		25-Aug-23	◆ 6.3.25 Complete structural works of Cross Passages 0.2																															
6.3.26 Complete structural works of Cross Passages 0.3	0		25-Aug-23	◆ 6.3.26 Complete structural works of Cross Passages 0.3																															
6.3.27 Complete structural works of Cross Passages 0.4	0		25-Aug-23	◆ 6.3.27 Complete structural works of Cross Passages 0.4																															
6.3.28 Complete structural works of Cross Passages 0.5	0		25-Aug-23	◆ 6.3.28 Complete structural works of Cross Passages 0.5																															
6.3.12 Complete Ground treatment for all Cross Passages 0.9	0		21-Sep-23	◆ 6.3.12 Complete Ground treatment for all Cross Passages 0.9																															
6.3.29 Complete structural works of Cross Passages 0.6	0		21-Sep-23	◆ 6.3.29 Complete structural works of Cross Passages 0.6																															
6.3.22 Complete excavation and support of Cross Passages 0.9	0		27-Sep-23	◆ 6.3.22 Complete excavation and support of Cross Passages 0.9																															
7.1 Western Ventilation Building	19	13-Jan-23 A	13-Apr-23 A																																
7.1.8 Complete concrete works of gross plan area for WVB 0.5	0		13-Jan-23 A	in area for WVB 0.5																															
7.1.9 Complete concrete works of gross plan area for WVB 0.75	0		13-Apr-23 A	◆ 7.1.9 Complete concrete works of gross plan area for WVB 0.75																															
8.1 Eastern Ventilation Building	0	19-Sep-23	19-Sep-23																																
8.1.4 Complete concrete works of gross plan area for EVB 0.25	0		19-Sep-23	◆ 8.1.4 Complete concrete works of gross plan area for EVB 0.25																															
9.1 Launching Shaft	0	30-Jun-23	30-Jun-23																																
9.1.18 Complete permanent wall & bottom slab for Launching Shaft by length 0.2	0		30-Jun-23	◆ 9.1.18 Complete permanent wall & bottom slab for Launching Shaft by length 0.2																															
9.1.19 Complete permanent wall & bottom slab for Launching Shaft by length 0.4	0		30-Jun-23	◆ 9.1.19 Complete permanent wall & bottom slab for Launching Shaft by length 0.4																															
9.1.20 Complete permanent wall & bottom slab for Launching Shaft by length 0.6	0		30-Jun-23	◆ 9.1.20 Complete permanent wall & bottom slab for Launching Shaft by length 0.6																															
9.1.21 Complete permanent wall & bottom slab for Launching Shaft by length 0.8	0		30-Jun-23	◆ 9.1.21 Complete permanent wall & bottom slab for Launching Shaft by length 0.8																															
9.1.22 Complete permanent wall & bottom slab for Launching Shaft by length 1	0		30-Jun-23	◆ 9.1.22 Complete permanent wall & bottom slab for Launching Shaft by length 1																															
9.1.23 Complete permanent top slab for Launching Shaft by length 0.2	0		30-Jun-23	◆ 9.1.23 Complete permanent top slab for Launching Shaft by length 0.2																															
9.1.24 Complete permanent top slab for Launching Shaft by length 0.4	0		30-Jun-23	◆ 9.1.24 Complete permanent top slab for Launching Shaft by length 0.4																															
11.1 Drill and Break Tunnel	195	18-Nov-22 A	30-Jun-23																																
11.1.7 Complete tunnel excavation 0.8 by length	0		18-Nov-22 A																																
11.1.9 Complete tunnel excavation 0.9 by length	0		13-Feb-23 A	lete tunnel excavation 0.9 by length																															
11.1.11 Complete tunnel excavation 1 by length	0		30-Jun-23	◆ 11.1.11 Complete tunnel excavation 1 by length																															
11.2 Cross Passages for Drill and Break Tunnel	44	27-Jul-23	15-Sep-23																																
11.2.1 Complete cross passages structure 0.1 by length	0		27-Jul-23	◆ 11.2.1 Complete cross passages structure 0.1 by length																															
11.2.2 Complete cross passages structure 0.2 by length	0		22-Aug-23	◆ 11.2.2 Complete cross passages structure 0.2 by length																															
11.2.3 Complete cross passages structure 0.3 by length	0		15-Sep-23	◆ 11.2.3 Complete cross passages structure 0.3 by length																															
12.1 Drill and Blast Tunnel	72	13-Jan-23 A	13-Jun-23 A																																
12.1.12 Complete tunnel structural lining 0.1 by length	0		13-Jan-23 A	by length																															
12.1.13 Complete tunnel structural lining 0.2 by length	0		13-Apr-23 A	◆ 12.1.13 Complete tunnel structural lining 0.2 by length																															
12.1.14 Complete tunnel structural lining 0.3 by length	0		13-May-23 A	◆ 12.1.14 Complete tunnel structural lining 0.3 by length																															
12.1.15 Complete tunnel structural lining 0.4 by length	0		13-Jun-23 A	◆ 12.1.15 Complete tunnel structural lining 0.4 by length																															
12.2 Cross Passages for Drill and Blast Tunnel	64	05-Aug-23	21-Oct-23																																
12.2.1 Complete cross passages structure by length 0.1	0		05-Aug-23	◆ 12.2.1 Complete cross passages structure by length 0.1																															
12.2.2 Complete cross passages structure by length 0.2	0		12-Sep-23	◆ 12.2.2 Complete cross passages structure by length 0.2																															



ED/2018/04 Trunk Road T2 and Infrastructure Works for Developments at South Apron

Three Months Rolling Programme (Jun-23)

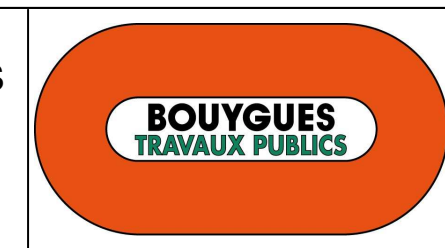


Date	Revision	Checked	Approved
18-Dec-19	00V1	WYu	
22-Feb-20	01V0	SPa/LLo	WYu
09-Apr-20	01V1	SPa/LLo	WYu
17-Jul-20	01V2	SPa/LLo	WYu
09-Oct-20	01V3	SPa/LLo	WYu
02-Jul-21	02V0	SPa/LLo	WYu

Activity Name	Dur	Start	Finish	2023																																			
				March					April				May				June				July			August				September			October								
				06	05	12	19	26	02	09	16	23	30	07	14	21	28	04	11	18	25	02	09	16	23	30	06	13	20	27	03	10	17	24	01	08	15	22	29
12.2.3 Complete cross passages structure by length 0.3	0		21-Oct-23																																		◆ 12.2.3		
13.1 Lam Tin Interchange Works	0	30-Jun-23	30-Jun-23																																				
13.1.1 Complete foundation	0		30-Jun-23*																		◆	13.1.1	Complete foundation																
13.1.2 Complete fabrication of structural frame	0		30-Jun-23*																		◆	13.1.2	Complete fabrication of structural frame																
13.1.3 Complete installation of structural frame	0		30-Jun-23*																		◆	13.1.3	Complete installation of structural frame																
13.1.4 Complete remaining works	0		30-Jun-23*																		◆	13.1.4	Complete remaining works																
13.1.5 Complete whole activities of this cost centre	0		30-Jun-23*																		◆	13.1.5	Complete whole activities of this cost centre																
14.2 At-grade Roadworks for Trunk Road T2 (including Depressed Roa	24	08-Sep-23	09-Oct-23																																				
14.2.7 Complete drainage installation 0.5	0		08-Sep-23																																	◆ 14.2.7 Complete drainage installation 0.5			
14.2.8 Complete drainage installation 1	0		09-Oct-23																																	◆ 14.2.8 Complete c			
14.5 Provisions for GOFS	37	30-Jun-23	14-Aug-23																																				
14.5.1 Complete provision for GOFS 0.2	0		30-Jun-23*																			◆	14.5.1	Complete provision for GOFS 0.2															
14.5.2 Complete provision for GOFS 0.4	0		30-Jun-23*																			◆	14.5.2	Complete provision for GOFS 0.4															
14.5.5 Complete provision for GOFS 1	0		07-Aug-23*																					◆	14.5.5	Complete provision for GOFS 1													
14.5.3 Complete provision for GOFS 0.6	0		14-Aug-23*																					◆	14.5.3	Complete provision for GOFS 0.6													
15.0 E&M Design Works	110	13-Feb-23 A	30-Jun-23																																				
15.0.10 Approval DDA for electrical system (power supply)	0		13-Feb-23 A	Approval DDA for electrical system (power supply)																																			
15.0.22 Approval DDA for Tunnel plumbing & drainage	0		13-Feb-23 A	Approval DDA for Tunnel plumbing & drainage																																			
15.0.26 Approval DDA for Tunnel lighting system	0		13-Feb-23 A	Approval DDA for Tunnel lighting system																																			
15.0.6 Approval DDA for tunnel ventilation system	0		13-Mar-23 A	◆ 15.0.6 Approval DDA for tunnel ventilation system																																			
15.0.18 Approval DDA for Tunnel fire services system	0		13-Apr-23 A	◆ 15.0.18 Approval DDA for Tunnel fire services system																																			
15.0.42 Approval DDA for APS in WVB	0		13-Jun-23 A	◆ 15.0.42 Approval DDA for APS in WVB																																			
15.0.14 Approval DDA for Tunnel extra low voltage system	0		30-Jun-23																			◆	15.0.14	Approval DDA for Tunnel extra low voltage system															
15.0.30 Approval DDA for remaining tunnel and at-grade E&M systems	0		30-Jun-23																			◆	15.0.30	Approval DDA for remaining tunnel and at-grade E&M systems															
15.0.34 Approval DDA for E&M in WVB	0		30-Jun-23																			◆	15.0.34	Approval DDA for E&M in WVB															
15.0.38 Approval DDA for E&M in EVB	0		30-Jun-23																			◆	15.0.38	Approval DDA for E&M in EVB															
15.0.43 Complete whole activities of this cost centre	0		30-Jun-23																			◆	15.0.43	Complete whole activities of this cost centre															
15.2 E&M Works for Western Ventilation Building	41	13-Oct-22 A	13-Mar-23 A																																				
15.2.10 Complete UG pipeworks from sumpit to manhole 1	0		13-Oct-22 A																																				
15.2.2 Complete terminal, mat, pit, conduit, opening and recess etc. 1	0		13-Dec-22 A																																				
15.2.7 Complete pit, cable duct, drawpits and accessories etc 0.5	0		13-Mar-23 A	◆ 15.2.7 Complete pit, cable duct, drawpits and accessories etc 0.5																																			
15.3 E&M Works for Eastern Ventilation Building	0	13-Dec-22 A	13-Dec-22 A																																				
15.3.7 Complete pit, cable duct, drawpits and accessories etc 0.5	0		13-Dec-22 A																																				
15.4 APS Works for Western Ventilation Building	0	30-Jun-23	30-Jun-23																																				
15.4.1 Complete site delivery of DeNO2 filters	0		30-Jun-23*																			◆	15.4.1	Complete site delivery of DeNO2 filters															
15.4.2 Complete installation of DeNO2 filters	0		30-Jun-23*																			◆	15.4.2	Complete installation of DeNO2 filters															
15.4.3 Complete site delivery of electrostatic precipitation system	0		30-Jun-23*																			◆	15.4.3	Complete site delivery of electrostatic precipitation system															
15.4.4 Complete installation of electrostatic precipitation system	0		30-Jun-23*																			◆	15.4.4	Complete installation of electrostatic precipitation system															
15.4.5 Complete site delivery of wash down system	0		30-Jun-23*																			◆	15.4.5	Complete site delivery of wash down system															
15.4.6 Complete installation of wash down system	0		30-Jun-23*																			◆	15.4.6	Complete installation of wash down system															
15.4.7 Complete site delivery of support system	0		30-Jun-23*																			◆	15.4.7	Complete site delivery of support system															
15.4.8 Complete installation of support system	0		30-Jun-23*																			◆	15.4.8	Complete installation of support system															
15.4.9 Complete T&C of complete APS and the integration with rest of T2 tunnel system	0		30-Jun-23*																			◆	15.4.9	Complete T&C of complete APS and the integration with rest of T2 tunnel system															
15.4.10 Complete whole activities of this cost centre	0		30-Jun-23*																			◆	15.4.10	Complete whole activities of this cost centre															
17.1 Works under Sections 6A, 6C and 12 and Associated Landscape \	195	13-Oct-22 A	30-Jun-23																																				
17.1.4 Complete excavation and disposal of material works 1	0		13-Oct-22 A																																				
17.1.13 Complete footpath 0.25	0		13-Oct-22 A																																				
17.1.14 Complete footpath 0.5	0		13-Oct-22 A																																				
17.1.15 Complete footpath 0.8	0		13-Oct-22 A																																				
17.1.17 Complete street furnitures of at-grade roads 0.25	0		13-Dec-22 A																																				
17.1.54 Complete T&C of water mains system 1	0		13-Jan-23 A	pm 1																																			
17.1.55 Complete landscaping works 0.25	0		13-Mar-23 A	◆ 17.1.55 Complete landscaping works 0.25																																			
17.1.16 Complete footpath 1	0		13-Mar-23 A	◆ 17.1.16 Complete footpath 1																																			

- ◆ Milestone
- Planned Bar
- Critical Activity
- ◆ Actual Milestone
- Actual Work

ED/2018/04 Trunk Road T2 and Infrastructure Works for Developments at South Apron Three Months Rolling Programme (Jun-23)



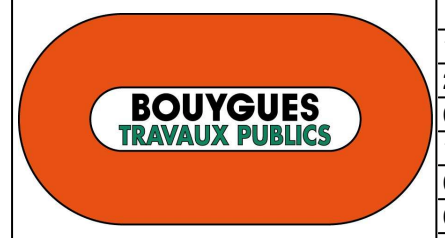
Date	Revision	Checked	Approved
18-Dec-19	00V1	WYu	
22-Feb-20	01V0	SPa/LLo	WYu
09-Apr-20	01V1	SPa/LLo	WYu
17-Jul-20	01V2	SPa/LLo	WYu
09-Oct-20	01V3	SPa/LLo	WYu
02-Jul-21	02V0	SPa/LLo	WYu

Activity Name	Dur	Start	Finish	2023																																							
				March					April					May					June					July					August					September					October				
				06	05	12	19	26	02	09	16	23	30	07	14	21	28	04	11	18	25	02	09	16	23	30	06	13	20	27	03	10	17	24	01	08	15	22	29				
DCS - S5 Pre-bored (1303m, 36m/d)	36	21-Dec-22	28-Dec-22																																								
DCS - S5 Sheet pile (666m2, 55m2/d)	12	09-Jan-23	12-Jan-23																																								
DCS - S5 Excavation (623m3, 40m3/d)	18	13-Jan-23	02-Feb-23																																								
DCS - S5 Pipe Installation - Set up (DN800 61m)	4	03-Feb-23	07-Feb-23																																								
DCS - S5 Pipe Installation - Pipe welding (3nos/d)	11	08-Feb-23	20-Feb-23																																								
DCS - S5 Pipe Installation - Electrofusion joint (33nos, 1.5nos/d)	22	21-Feb-23	17-Mar-23																																								
DCS - S5 Backfill	12	18-Mar-23	31-Mar-23																																								
DCS - T&C	48	12-Aug-23	09-Oct-23																																								
Road L10 (Southern)	200	31-Mar-23	01-Dec-23																																								
Excavation	134	31-Mar-23	12-Sep-23																																								
L10(S) 1 Excavation (1460m3, 110m3/d)	14	31-Mar-23	20-Apr-23																																								
L10(S) 2 Excavation (1620m3, 110m3/d)	15	21-Apr-23	18-May-23																																								
L10(S) 3 Excavation (1700m3, 110m3/d)	16	19-May-23	19-Jul-23																																								
L10(S) 4 Excavation (960m3, 110m3/d) & Strutting (6d)	15	20-Jul-23	05-Aug-23																																								
L10(S) 5 Excavation (960m3, 110m3/d) & Strutting (6d)	15	07-Aug-23	23-Aug-23																																								
L10(S) 6 Excavation (1200m3, 110m3/d) & Strutting (6d)	17	24-Aug-23	12-Sep-23																																								
Drainage	138	21-Apr-23	05-Oct-23																																								
L10(S) 1 Drainage & Sewerage (5 manhole, 6d/nos)	30	21-Apr-23	25-May-23																																								
L10(S) 2 Drainage & Sewerage (3 manhole, 6d/nos)	18	27-May-23	20-Jun-23																																								
L10(S) 3 Drainage & Sewerage (1 manhole, 6d/nos)	6	21-Jun-23	26-Jul-23																																								
L10(S) 4 Drainage & Sewerage (3 manhole, 6d/nos)	18	07-Aug-23	26-Aug-23																																								
L10(S) 5 Drainage & Sewerage (1 manhole, 6d/nos)	6	28-Aug-23	02-Sep-23																																								
L10(S) 6 Drainage & Sewerage (3 manhole, 6d/nos)	18	13-Sep-23	05-Oct-23																																								
Watermain	131	15-May-23	19-Oct-23																																								
L10(S) 1 Watermain (30m/6d)	12	15-May-23	29-May-23																																								
L10(S) 2 Watermain (30m/6d)	12	30-May-23	21-Jun-23																																								
L10(S) 3 Watermain (30m/6d)	12	23-Jun-23	09-Aug-23																																								
L10(S) 4 Watermain (30m/6d)	12	28-Aug-23	09-Sep-23																																								
L10(S) 5 Watermain (30m/6d)	12	11-Sep-23	23-Sep-23																																								
L10(S) 6 Watermain (30m/6d)	12	06-Oct-23	19-Oct-23																																								
Backfill	131	30-May-23	03-Nov-23																																								
L10(S) 1 Backfill	12	30-May-23	13-Jun-23																																								
L10(S) 2 Backfill	12	14-Jun-23	14-Jul-23																																								
L10(S) 3 Backfill	12	10-Aug-23	23-Aug-23																																								
L10(S) 4 Backfill	12	11-Sep-23	23-Sep-23																																								
L10(S) 5 Backfill	12	25-Sep-23	10-Oct-23																																								
L10(S) 6 Backfill	12	20-Oct-23	03-Nov-23																																								
L10(S) DPR Pit	30	28-Oct-23	01-Dec-23																																								
L10(S) Stage 3 Excavation (3250m3, 110m3/d)	30	28-Oct-23	01-Dec-23																																								
Steel Platform area	18	20-Oct-23	10-Nov-23																																								
L10(S) Stage 2 Sheet pile (252m2, 55m2/d)	6	20-Oct-23	27-Oct-23																																								
L10(S) Stage 2 Excavation (1200m3, 110m3/d)	12	28-Oct-23	10-Nov-23																																								
Outfall 2 & Branch Drainage	115	07-Sep-22	28-Feb-23																																								
Portion H1	115	07-Sep-22	28-Feb-23																																								
Section H1 part 2 Sheet pile (648m2)	12	07-Sep-22	08-Oct-22																																								
Section H1 part 3 Sheet pile (504m2)	10	07-Sep-22	08-Oct-22																																								
Section H1 part 3 Excavation (660m3)	12	10-Oct-22	03-Nov-22																																								
Section H1 part 2 Excavation (848m3)	14	10-Oct-22	03-Nov-22																																								
Section H1 part 3 Drainage	12	31-Oct-22	12-Nov-22																																								
Section H1 part 2 Drainage	12	31-Oct-22	12-Nov-22																																								
Section H1 part 2 Backfill	6	14-Nov-22	09-Dec-22																																								
Section H1 part 3 Backfill	6	14-Nov-22	16-Dec-22																																								
Inspection for H/O	24	17-Dec-22	17-Jan-23																																								

- ◆ Milestone
- Planned Bar
- Critical Activity
- ◆ Actual Milestone
- Actual Work

ED/2018/04 Trunk Road T2 and Infrastructure Works for Developments at South Apron

Three Months Rolling Programme (Jun-23)



Date	Revision	Checked	Approved
18-Dec-19	00V1	WYu	
22-Feb-20	01V0	SPa/LLo	WYu
09-Apr-20	01V1	SPa/LLo	WYu
17-Jul-20	01V2	SPa/LLo	WYu
09-Oct-20	01V3	SPa/LLo	WYu
02-Jul-21	02V0	SPa/LLo	WYu

Activity Name	Dur	Start	Finish	2023																															
				March				April				May				June				July				August				September				October			
				6	05	12	19	26	02	09	16	23	30	07	14	21	28	04	11	18	25	02	09	16	23	30	06	13	20	27	03	10	17	24	01
Section 6C Completion	0		28-Feb-23 A	Section 6C Completion																															
Outfall 2	70	03-Oct-22 A	26-Jan-23 A																																
Outfall 2 - Sheetpiling (528m2, assume half typical)	20	03-Oct-22 A	15-Oct-22 A																																
Portion H2 Full Possession	0		03-Oct-22 A																																
Outfall 2 - Excavation to S1 (+4.7 to +3.5, 136m3)	3	17-Oct-22 A	19-Oct-22 A																																
Outfall 2 - S1 Installation	6	19-Oct-22 A	25-Oct-22 A																																
Outfall 2 - Excavation to S2 (+3.5 to +1.7, 203m3)	8	26-Oct-22 A	08-Nov-22 A																																
Outfall 2 - S2 Installation	6	09-Nov-22 A	15-Nov-22 A																																
Outfall 2 - Excavation to FEL (+1.7 to -1.4, 350m3)	14	16-Nov-22 A	22-Nov-22 A																																
Outfall 2 - Ground Improvement Works for FEL	4	23-Nov-22 A	28-Nov-22 A																																
Outfall 2 - Base Slab (12m3)	2	29-Nov-22 A	30-Nov-22 A																																
Outfall 2 - Backfill to Pipe Bottom Level	2	01-Dec-22 A	03-Dec-22 A																																
Outfall 2 - Steel Plate Installation	2	05-Dec-22 A	06-Dec-22 A																																
Outfall 2 - Concrete surround installed pipes	3	07-Dec-22 A	09-Dec-22 A																																
Outfall 2 - Core-cut seawall	10	10-Dec-22 A	21-Dec-22 A																																
Outfall 2 - Remaining pipes installation	2	22-Dec-22 A	23-Dec-22 A																																
Outfall 2 - Tie Bar Installation	2	24-Dec-22 A	28-Dec-22 A																																
Outfall 2 - Tremie Concrete	2	29-Dec-22 A	30-Dec-22 A																																
Outfall 2 - Pipe Installation up to seawall block	12	03-Jan-23 A	16-Jan-23 A	block																															
Outfall 2 - Backfill	6	17-Jan-23 A	26-Jan-23 A																																
Foot Bridge FB-02	339	31-Aug-22 A	24-Nov-23																																
Foundation	54	31-Aug-22 A	09-Dec-22 A																																
Lift C&D	3	31-Aug-22 A	09-Dec-22 A																																
FB-02 H-pile Installation & Grouting	3	31-Aug-22 A	09-Dec-22 A																																
P1	3	31-Aug-22 A	17-Nov-22 A																																
FB-02 H-pile Installation & Grouting	3	31-Aug-22 A	17-Nov-22 A																																
Structure	306	15-Sep-22 A	10-Nov-23																																
Pile Cap	26	17-Dec-22 A	05-Jan-23 A																																
FB-02 Pipe Cap - LC&D	24	17-Dec-22 A	03-Jan-23 A																																
FB-02 Pipe Cap - P1	24	20-Dec-22 A	05-Jan-23 A																																
Pier	12	06-Jan-23 A	19-Jan-23 A																																
FB-02 Pier - P1	12	06-Jan-23 A	19-Jan-23 A																																
Bridge Deck / Staircase	172	28-Oct-22 A	11-Aug-23																																
FB-02 Staircase A	48	28-Oct-22 A	11-Aug-23	FB-02 Staircase A																															
FB-02 Bridge deck construction Bay 2 (P4 - P5)	60	31-Oct-22 A	16-Mar-23 A	FB-02 Bridge deck construction Bay 2 (P4 - P5)																															
FB-02 Bridge deck construction Bay 3 (P2 - P3)	60	03-Dec-22 A	08-Mar-23 A	FB-02 Bridge deck construction Bay 3 (P2 - P3)																															
FB-02 Bridge deck construction Bay 4 (P1 - P2)	60	01-Feb-23 A	08-Mar-23 A	FB-02 Bridge deck construction Bay 4 (P1 - P2)																															
FB-02 Bridge deck construction - Post Tensioning	29	31-Mar-23 A	06-May-23 A	FB-02 Bridge deck construction - Post Tensioning																															
Lift Shaft	306	15-Sep-22 A	10-Nov-23																																
FB-02 Lift Shaft - LA&B	36	15-Sep-22 A	26-Apr-23 A	FB-02 Lift Shaft - LA&B																															
Lift Procurement	130	03-Dec-22 A	15-Apr-23 A	Lift Procurement																															
FB-02 Lift Shaft - LC&D	36	17-Mar-23 A	11-Aug-23	FB-02 Lift Shaft - LC&D																															
FB-02 Lift A&B Installation & Commissioning	75	30-Jun-23 A	26-Sep-23	FB-02 Lift A&B Installation & Commissioning																															
FB-02 Lift C&D Installation & Commissioning	75	12-Aug-23	10-Nov-23																																
ABWF & E&M	113	12-Jun-23 A	24-Nov-23																																
FB-02 Bridge cover/ E&M/ T&C/ Landscape	113	12-Jun-23 A	24-Nov-23*																																
Road L10 / Road L18	281	01-Dec-22 A	12-Dec-23																																
L18 Roundabout Drainage (3 manhole)	18	01-Dec-22 A	29-Dec-22 A																																
L10 Roundabout Drainage (7 manhole)	42	14-Dec-22 A	18-Aug-23	L10 Roundabout Drainage (7 manhole)																															
L18 Drainage (23 Gully & 5 Catchpit)	53	30-Dec-22 A	06-Mar-23 A	L18 Drainage (23 Gully & 5 Catchpit)																															
L18 Watermain (90m)	36	07-Mar-23 A	21-Apr-23 A	L18 Watermain (90m)																															
L10 Watermain (140m)	60	15-Jun-23 A	12-Dec-23																																
L10 Drainage (28 Gully & 1 Catchpit)	34	19-Aug-23	27-Sep-23	L10 Drainage (28 Gully & 1 Ca																															

- ◆ Milestone
- Planned Bar
- Critical Activity
- ◆ Actual Milestone
- Actual Work

ED/2018/04 Trunk Road T2 and Infrastructure Works for Developments at South Apron

Three Months Rolling Programme (Jun-23)



Date	Revision	Checked	Approved
18-Dec-19	00V1	WYu	
22-Feb-20	01V0	SPa/LLo	WYu
09-Apr-20	01V1	SPa/LLo	WYu
17-Jul-20	01V2	SPa/LLo	WYu
09-Oct-20	01V3	SPa/LLo	WYu
02-Jul-21	02V0	SPa/LLo	WYu

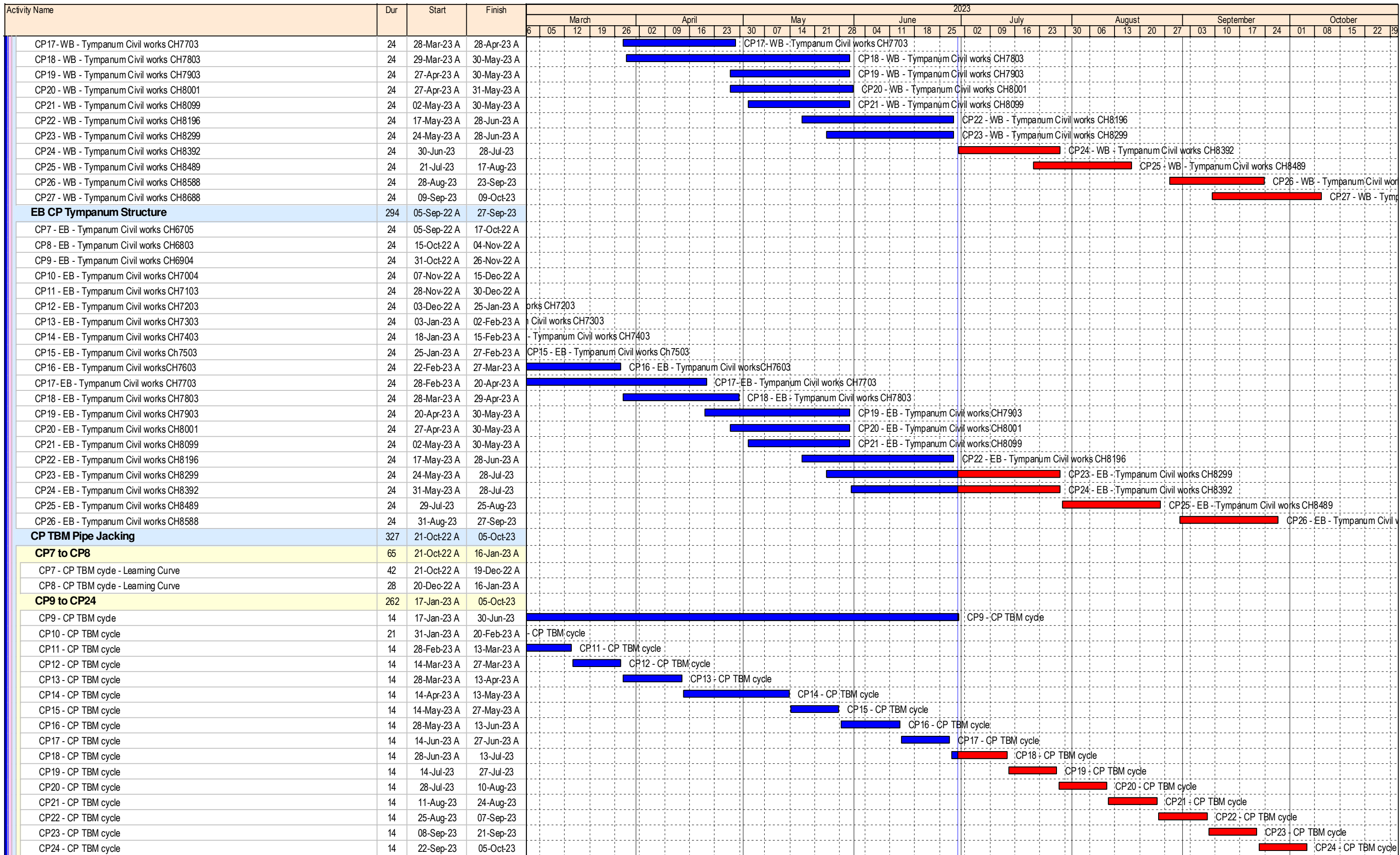
Activity Name	Dur	Start	Finish	2023																																							
				March					April					May					June					July					August					September					October				
				6	05	12	19	26	02	09	16	23	30	07	14	21	28	04	11	18	25	02	09	16	23	30	06	13	20	27	03	10	17	24	01	08	15	22	29				
L10 Roundabout Watermain (90m)	36	19-Aug-23	29-Sep-23																												L10 Roundabout Watermain												
L10/L18 Sewerage (4 manhole) FMH1.2,1.5A, 1.5,1.6	24	31-Aug-23	27-Sep-23																												L10/L18 Sewerage (4 manhole)												
L10/L18 Sewerage (2 manhole) FMH1.3,1.4	12	28-Sep-23	13-Oct-23																												L10/L18 Sewerage												
L10/L18 Roadworks	48	14-Oct-23	09-Dec-23																												L10/L18 Roadworks												
[STE] Kai Hing Road / Lam Chak Street Modification	600	31-Mar-23 A	10-Jul-25																																								
LCS / KHR - Public Road TTMS stages	600	31-Mar-23 A	10-Jul-25																																								
[STE] Road L10 (Northern)	356	18-Jul-22 A	19-Dec-23																																								
CUE L10(N) Phase 1	46	10-Oct-22 A	15-Dec-22 A																																								
CUE L10(N) Part 1 Backfill & Remove S2 (80m, 10d/20m)	32	10-Oct-22 A	15-Nov-22 A																																								
CUE L10(N) Part 1 Backfill & Remove S1 (80m, 10d/20m)	32	16-Nov-22 A	15-Dec-22 A																																								
CUE L10(N) Phase 2	72	29-Sep-22 A	19-Jan-23 A																																								
CUE L10(N) Part 2 Wall & Top Slab Bay 2 (CH120 - 100)	10	29-Sep-22 A	08-Oct-22 A																																								
CUE L10(N) Part 2 Wall & Top Slab Bay 3 (CH100 - 80)	10	10-Oct-22 A	22-Oct-22 A																																								
CUE L10(N) Part 2 Wall & Top Slab Bay 4 (CH80 - 64)	10	24-Oct-22 A	31-Oct-22 A																																								
CUE L10(N) Part 2 Backfill & Remove S2 (80m, 10d/20m)	32	12-Nov-22 A	15-Dec-22 A																																								
CUE L10(N) Part 2 Backfill & Remove S1 (80m, 10d/20m)	32	16-Dec-22 A	19-Jan-23 A																																								
CUE L10(N) Phase 3	223	18-Jul-22 A	30-May-23 A																																								
CUE L10(N) Part 3 ELS (Sheet pile) (5857m2, ass. 92m2/d)	64	18-Jul-22 A	22-Oct-22 A																																								
CUE L10(N) Part 3 Excavation to S1 (5500m3, 110m3/d & 2 strut layer @ 8d)	9	24-Oct-22 A	05-Nov-22 A																																								
CUE L10(N) Part 3 S1 Strutting (8d)	8	07-Nov-22 A	15-Nov-22 A																																								
CUE L10(N) Part 3 Excavation to S2 5500m3, 110m3/d & 2 strut layer @ 8d)	25	16-Nov-22 A	01-Dec-22 A																																								
CUE L10(N) Part 3 S2 Strutting (8d)	8	02-Dec-22 A	12-Dec-22 A																																								
CUE L10(N) Part 3 Excavation to FEL (5500m3, 110m3/d & 2 strut layer @ 8d)	16	13-Dec-22 A	05-Jan-23 A																																								
CUE L10(N) Part 3 DL, Blinding, Waterproofing, BS (60m)	21	06-Jan-23 A	19-Jan-23 A																																								
CUE L10(N) Part 3 Backfill & Strut S2 Removal	18	12-Jan-23 A	13-Feb-23 A																																								
CUE L10(N) Part 3 Wall & Top Slab Bay 1 (CH64 - 40)	8	14-Feb-23 A	21-Feb-23 A																																								
CUE L10(N) Part 3 Wall & Top Slab Bay 2 (CH40 - 20)	10	22-Feb-23 A	28-Feb-23 A																																								
CUE L10(N) Part 3 Wall & Top Slab Bay 3 (CH20 - 0)	10	28-Feb-23 A	10-Mar-23 A																																								
CUE L10(N) Part 3 Backfill & Remove S2 (60m, 10d/20m)	24	11-Mar-23 A	28-Apr-23 A																																								
CUE L10(N) Part 3 Backfill & Remove S1 (60m, 10d/20m)	24	31-Mar-23 A	30-May-23 A																																								
CUE L10(N) Remaining	66	26-Sep-22 A	28-Dec-22 A																																								
CUE L10(N) remain Structure (1 Bay, 36d/bay)	36	26-Sep-22 A	16-Nov-22 A																																								
CUE L10(N) remain Backfill & Remove S2	10	17-Nov-22 A	14-Dec-22 A																																								
CUE L10(N) remain Backfill & Remove S1	10	15-Dec-22 A	28-Dec-22 A																																								
CUE L10(N) E&M	166	15-Dec-22 A	19-Dec-23																																								
CUE L10(N) E&M and FSI	144	15-Dec-22 A	19-Dec-23																																								
CUE L10(N) Watermain (200m, 30m/wk)	80	28-Jun-23 A	04-Oct-23																																								
L10(N) Utilities	270	17-Sep-22 A	11-Oct-23																																								
L10(N) Stage 1 Sheet pile (1900m2, 55m2/d)	36	17-Sep-22 A	11-Nov-22 A																																								
L10(N) Stage 1 Excavation (2000m3, 110m3/d)	18	12-Nov-22 A	02-Dec-22 A																																								
L10(N) Stage 1 Drainage & Sewerage (8 manhole)	48	03-Dec-22 A	27-Feb-23 A																																								
L10(N) Stage 1 Watermain (100m, 30m/wk)	40	28-Feb-23 A	16-Jun-23 A																																								
L10(N) Stage 2 Sheet pile (1179m2, 55m2/d)	22	28-Feb-23 A	24-Mar-23 A																																								
L10(N) Stage 1 Drainage (34 Gully & 2 Catchpit)	46	28-Feb-23 A	23-Jun-23 A																																								
L10(N) Stage 2 Excavation (2610m3, 110m3/d)	24	25-Mar-23 A	06-Apr-23 A																																								
L10(N) Stage 3 Sheet pile (936m2, 55m2/d)	18	25-Mar-23 A	20-Jun-23 A																																								
L10(N) Stage 2 Drainage & Sewerage (7 manhole)	42	11-Apr-23 A	15-May-23 A																																								
L10(N) Stage 3 Excavation (2340m3, 110m3/d)	21	26-Apr-23 A	07-Jun-23 A																																								
L10(N) Stage 3 Drainage & Sewerage (6 manhole)	36	16-May-23 A	11-Aug-23																																								
L10(N) Stage 2 Drainage (23 Gully & 2 Catchpit)	35	31-May-23 A	30-Jun-23																																								
L10(N) Stage 2 Watermain (71m, 30m/wk)	28	31-May-23 A	02-Aug-23																																								
L10(N) Stage 1 Roadworks	24	30-Jun-23	28-Jul-23																																								
L10(N) Stage 2 Roadworks	24	03-Aug-23	30-Aug-23																																								

- ◆ Milestone
- Planned Bar
- Critical Activity
- ◆ Actual Milestone
- Actual Work

**ED/2018/04 Trunk Road T2 and Infrastructure Works
for Developments at South Apron
Three Months Rolling Programme (Jun-23)**



Date	Revision	Checked	Approved
18-Dec-19	00V1	WYu	
22-Feb-20	01V0	SPa/LLo	WYu
09-Apr-20	01V1	SPa/LLo	WYu
17-Jul-20	01V2	SPa/LLo	WYu
09-Oct-20	01V3	SPa/LLo	WYu
02-Jul-21	02V0	SPa/LLo	WYu



- ◆ Milestone
- Planned Bar
- Critical Activity
- ◆ Actual Milestone
- Actual Work

ED/2018/04 Trunk Road T2 and Infrastructure Works for Developments at South Apron

Three Months Rolling Programme (Jun-23)



Date	Revision	Checked	Approved
18-Dec-19	00V1	WYu	
22-Feb-20	01V0	SPa/LLo	WYu
09-Apr-20	01V1	SPa/LLo	WYu
17-Jul-20	01V2	SPa/LLo	WYu
09-Oct-20	01V3	SPa/LLo	WYu
02-Jul-21	02V0	SPa/LLo	WYu

Activity Name	Dur	Start	Finish	2023																																							
				March					April					May					June					July					August					September					October				
				6	05	12	19	26	02	09	16	23	30	07	14	21	28	04	11	18	25	02	09	16	23	30	06	13	20	27	03	10	17	24	01	08	15	22	29				
CP Internal & Collar Structure	217	28-Feb-23 A	20-Nov-23	[Gantt chart bars for CP7-CP23]																																							
SUB-SEA TUNNEL INTERNAL & FINISHING	309	14-Nov-22 A	28-Nov-23	[Gantt chart bars for sub-sea tunnel work]																																							
Corbel	297	14-Nov-22 A	14-Nov-23	[Gantt chart bars for corbel work]																																							
Westbound	297	14-Nov-22 A	14-Nov-23	[Gantt chart bars for westbound corbel work]																																							
Eastbound	155	04-Jan-23 A	10-Oct-23	[Gantt chart bars for eastbound corbel work]																																							

- ◆ Milestone
- Planned Bar
- Critical Activity
- ◆ Actual Milestone
- Actual Work

ED/2018/04 Trunk Road T2 and Infrastructure Works for Developments at South Apron

Three Months Rolling Programme (Jun-23)



Date	Revision	Checked	Approved
18-Dec-19	00V1	WYu	
22-Feb-20	01V0	SPa/LLo	WYu
09-Apr-20	01V1	SPa/LLo	WYu
17-Jul-20	01V2	SPa/LLo	WYu
09-Oct-20	01V3	SPa/LLo	WYu
02-Jul-21	02V0	SPa/LLo	WYu

Activity Name	Dur	Start	Finish	2023																																															
				March				April				May				June				July				August				September				October																			
				6	05	12	19	26	02	09	16	23	30	07	14	21	28	04	11	18	25	02	09	16	23	30	06	13	20	27	03	10	17	24	01	08	15	22	29												
EB - D&BI Tunnel - CH9100-9050 Type A - Base slab	28	20-Dec-22 A	15-Feb-23 A	EB - D&BI Tunnel - CH9100-9050 Type A - Base slab																																															
EB - D&BI Tunnel - CH9135-9050 Type C - Wall (6m bay, 15bay, 5d/bay)	75	16-Feb-23 A	02-Sep-23	EB - D&BI Tunnel - CH9135-9050 Type C - Wall (6m bay, 15bay, 5d/bay)																																															
EB - D&BI Tunnel - A/C/E Junction End Wall	52	15-Mar-23 A	07-Aug-23	EB - D&BI Tunnel - A/C/E Junction End Wall																																															
EB - D&BI Tunnel - CH9135-9050 Type C - Crown (6m bay, 8d/bay)	120	04-Sep-23	27-Jan-24	EB - D&BI Tunnel - CH9135-9050 Type C - Crown (6m bay, 8d/bay)																																															
Tunnel Structure EB Type A (D&Br)	58	01-Feb-23 A	24-Aug-23	Tunnel Structure EB Type A (D&Br)																																															
EB - D&BI Tunnel - CH8988-9050 Type A - SG Preparation	17	01-Feb-23 A	20-Feb-23 A	EB - D&BI Tunnel - CH8988-9050 Type A - SG Preparation																																															
EB - D&BI Tunnel - CH8988-9050 Type A - SG Installation	12	20-Feb-23 A	04-Mar-23 A	EB - D&BI Tunnel - CH8988-9050 Type A - SG Installation																																															
EB - D&BI Tunnel - CH8988-9050 Type A - Kicker	30	06-Mar-23 A	04-Aug-23	EB - D&BI Tunnel - CH8988-9050 Type A - Kicker																																															
EB - D&BI Tunnel - CH8988-9050 Type A - Base slab	17	14-Mar-23 A	24-Aug-23	EB - D&BI Tunnel - CH8988-9050 Type A - Base slab																																															
Tunnel Structure S01 Branch Tunnel	379	11-Jul-22 A	08-Nov-23	Tunnel Structure S01 Branch Tunnel																																															
EB - D&BI Tunnel - S01 Branch Tunnel - Drainage Installation	40	11-Jul-22 A	05-Nov-22 A	EB - D&BI Tunnel - S01 Branch Tunnel - Drainage Installation																																															
EB - D&BI Tunnel - S01 Branch Tunnel - Base Slab & Kicker (3d/bay)	21	20-Jul-22 A	19-Nov-22 A	EB - D&BI Tunnel - S01 Branch Tunnel - Base Slab & Kicker (3d/bay)																																															
EB - Lining Fwk S01 Branch Tunnel Assembly	30	01-Mar-23 A	17-Apr-23 A	EB - Lining Fwk S01 Branch Tunnel Assembly																																															
EB - D&BI Tunnel - S01 Branch Tunnel - Lining Structure (5d/bay, 145 - 215)	30	17-Apr-23 A	04-Aug-23	EB - D&BI Tunnel - S01 Branch Tunnel - Lining Structure (5d/bay, 145 - 215)																																															
EB - D&BI Tunnel - S01 Branch Tunnel - Lining Structure (CH215-231)	15	07-Oct-23	25-Oct-23	EB - D&BI Tunnel - S01 Branch Tunnel - Lining Structure (CH215-231)																																															
EB - Lining Fwk S01 Branch Tunnel Dismantling	12	26-Oct-23	08-Nov-23	EB - Lining Fwk S01 Branch Tunnel Dismantling																																															
Cross Passage	271	12-Dec-22 A	11-Nov-23	Cross Passage																																															
CP33	271	12-Dec-22 A	11-Nov-23	CP33																																															
EB - D&Br Tunnel - CP33 (5m plug)	36	12-Dec-22 A	28-Apr-23 A	EB - D&Br Tunnel - CP33 (5m plug)																																															
CP33 - Junction Structure	52	01-Apr-23 A	06-Oct-23	CP33 - Junction Structure																																															
CP33 - Exc. for Drainage	18	30-Jun-23	21-Jul-23	CP33 - Exc. for Drainage																																															
CP33 - Base slab / Kicker	12	22-Jul-23	04-Aug-23	CP33 - Base slab / Kicker																																															
CP33 - Lining FW	30	07-Oct-23	11-Nov-23	CP33 - Lining FW																																															
EAST VENTILATION BUILDING [EVB]	385	20-Jul-22 A	21-Nov-23	EAST VENTILATION BUILDING [EVB]																																															
Foundation / Portal Structure	385	20-Jul-22 A	21-Nov-23	Foundation / Portal Structure																																															
Westbound	385	20-Jul-22 A	21-Nov-23	Westbound																																															
EVB - WB Foundation & SG Level Walls & Slab	91	20-Jul-22 A	27-Mar-23 A	EVB - WB Foundation & SG Level Walls & Slab																																															
EVB - WB Tunnel & Plenum Level Wall & Column	48	28-Mar-23 A	25-Aug-23	EVB - WB Tunnel & Plenum Level Wall & Column																																															
EVB - WB Tunnel & Plenum Level Beam & Slab	36	09-Aug-23	19-Sep-23	EVB - WB Tunnel & Plenum Level Beam & Slab																																															
EVB - WB Tunnel Mezzanine Level Wall & Column	36	20-Sep-23	03-Nov-23	EVB - WB Tunnel Mezzanine Level Wall & Column																																															
EVB - WB Tunnel Mezzanine Level Beam & Slab	24	25-Oct-23	21-Nov-23	EVB - WB Tunnel Mezzanine Level Beam & Slab																																															
Eastbound	321	22-Aug-22 A	21-Nov-23	Eastbound																																															
Trench Excavation	18	22-Aug-22 A	30-Sep-22 A	Trench Excavation																																															
EVB - EB Earth Mat Installation	12	03-Oct-22 A	08-Oct-22 A	EVB - EB Earth Mat Installation																																															
EVB - EB Drainage & Blinding	18	10-Oct-22 A	22-Oct-22 A	EVB - EB Drainage & Blinding																																															
EVB - EB Foundation & SG Level Walls & Slab	60	24-Oct-22 A	20-Feb-23 A	EVB - EB Foundation & SG Level Walls & Slab																																															
EVB - EB Tunnel & Plenum Level Wall & Column	48	31-Mar-23 A	25-Aug-23	EVB - EB Tunnel & Plenum Level Wall & Column																																															
EVB - EB Tunnel & Plenum Level Beam & Slab	36	09-Aug-23	19-Sep-23	EVB - EB Tunnel & Plenum Level Beam & Slab																																															
EVB - EB Tunnel Mezzanine Level Wall & Column	36	20-Sep-23	03-Nov-23	EVB - EB Tunnel Mezzanine Level Wall & Column																																															
EVB - EB Tunnel Mezzanine Level Beam & Slab	24	25-Oct-23	21-Nov-23	EVB - EB Tunnel Mezzanine Level Beam & Slab																																															
TUNNEL E&M INSTALLATION & COMMISSIONING	86	30-Jun-23	11-Oct-23	TUNNEL E&M INSTALLATION & COMMISSIONING																																															
TKO-LTT Admin Building	86	30-Jun-23	11-Oct-23	TKO-LTT Admin Building																																															
Material Delivery	6	30-Jun-23*	07-Jul-23	Material Delivery																																															
Cable Trunking and Tray Installation	36	08-Jul-23	18-Aug-23	Cable Trunking and Tray Installation																																															
Submain Power Supply Installation	12	08-Jul-23	21-Jul-23	Submain Power Supply Installation																																															
Conduit Installation	24	22-Jul-23	18-Aug-23	Conduit Installation																																															
Cable Pulling	24	22-Jul-23	18-Aug-23	Cable Pulling																																															
Final Circuit Installation	8	19-Aug-23	28-Aug-23	Final Circuit Installation																																															
Testing & Commissioning	36	29-Aug-23	11-Oct-23	Testing & Commissioning																																															
ER1.4.25 (L) ...construction of TKO-LTT...is planned to complete in 2021	0		11-Oct-23	ER1.4.25 (L) ...construction of TKO-LTT...is planned to complete in 2021																																															
EXECUTIVE SUMMARY	87	30-Jun-23	12-Oct-23	EXECUTIVE SUMMARY																																															
General	0	30-Jun-23	30-Jun-23	General																																															

- ◆ Milestone
- ▬ Planned Bar
- ▬ Critical Activity
- ◆ Actual Milestone
- ▬ Actual Work

ED/2018/04 Trunk Road T2 and Infrastructure Works for Developments at South Apron

Three Months Rolling Programme (Jun-23)



Date	Revision	Checked	Approved
18-Dec-19	00V1	WYu	
22-Feb-20	01V0	SPa/LLo	WYu
09-Apr-20	01V1	SPa/LLo	WYu
17-Jul-20	01V2	SPa/LLo	WYu
09-Oct-20	01V3	SPa/LLo	WYu
02-Jul-21	02V0	SPa/LLo	WYu

